

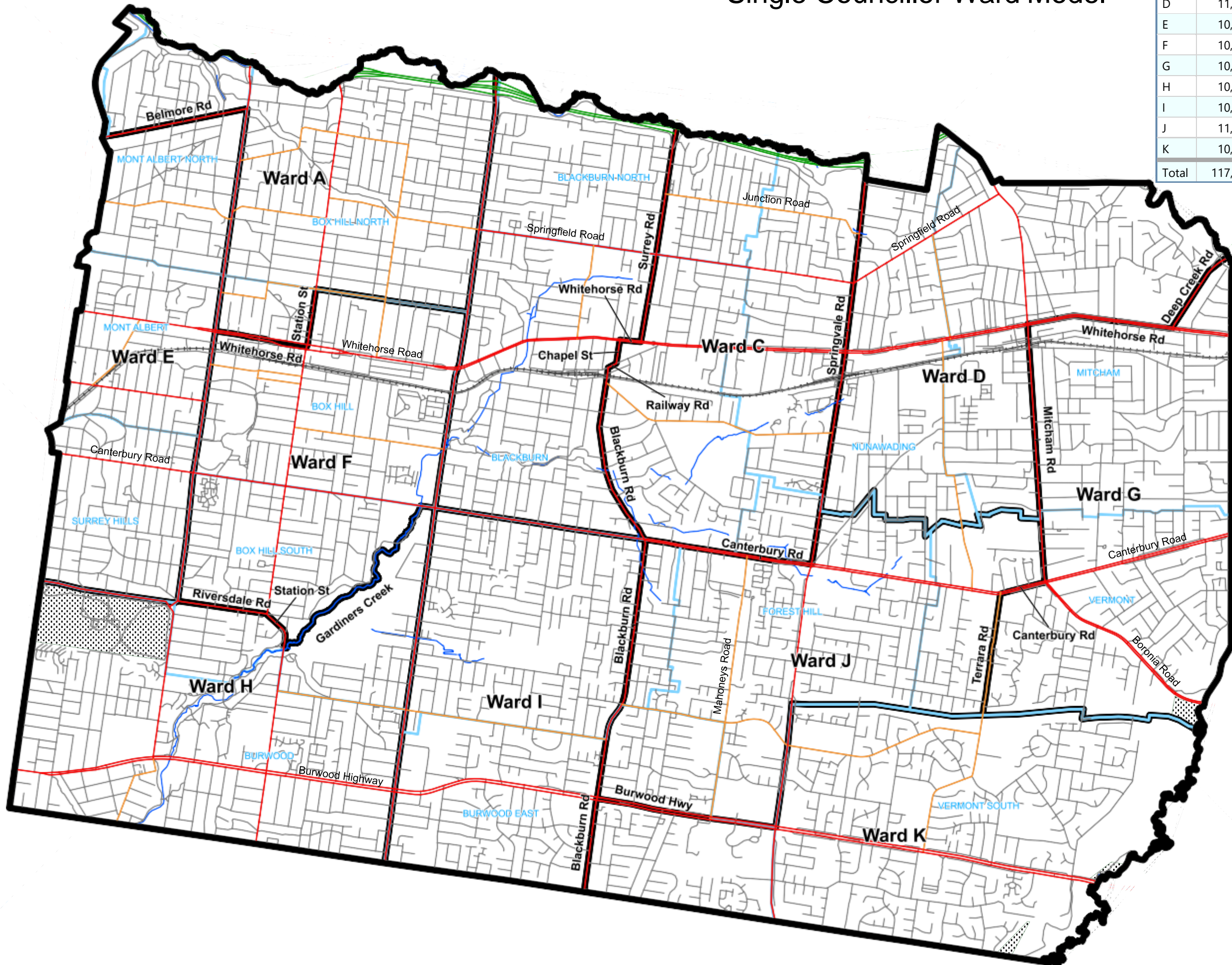
Whitehorse City Council

Single Councillor Ward Model

Ward	Electors*	Current Dev.	2020 Dev.
A	11,038	+3.15%	+4.90%
B	10,539	-1.51%	-1.32%
C	10,412	-2.70%	-1.59%
D	11,249	+5.13%	+2.73%
E	10,700	-0.00%	-2.37%
F	10,526	-1.63%	-1.80%
G	10,711	+0.10%	-4.24%
H	10,074	-5.85%	-1.35%
I	10,704	+0.03%	+0.65%
J	11,264	+5.27%	+7.75%
K	10,488	-1.99%	-3.35%
Total	117,705	Average	10,700

*Voters roll at 12 February 2019

Projected deviations calculated from enrolment projections and use voting entitlements from LGA1989. Projections are estimates only.



Legend

- Boundary
- Map Symbols**
 - Freeway
 - Main Road
 - Collector Road
 - Road
 - Unsealed Road
 - Railway Line
 - River/Creek
 - Park/Reserve
 - Locality Boundary

