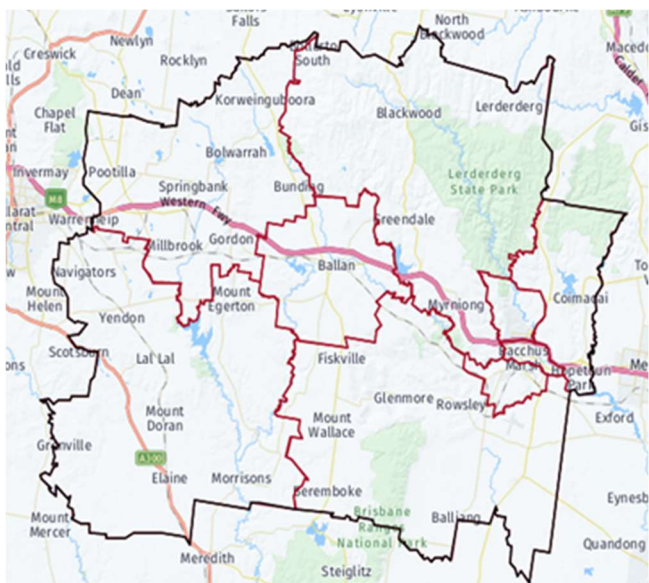


Growing Suburbs Fund 2022-23

The Growing Suburbs Fund (GSF) is a \$425M contribution to support the delivery of high priority community infrastructure projects for Victoria’s diverse and fast-growing outer suburbs. Designed to support the existing and future local infrastructure needs of Melbourne’s interface and peri-urban communities, the GSF brings forward local infrastructure projects that are essential to the liveability of outer suburban families.

Moorabool Shire Council



Moorabool Shire is located in south-western Victoria, about 80 kilometres west of the Melbourne CBD and borders the City of Ballarat to the west.

Known as one of Victoria’s peri-urban councils, the area recorded a growth rate of 2.7% in 2019-20¹. The current population of 36,013 is expected to grow to 49,939 or 38.7% by 2036².

Victoria’s population growth slowed during the pandemic period with the impact over this time mainly felt in the inner and middle suburbs of Melbourne; regional areas were less affected due to increased migration from Melbourne. Based on the latest available data, areas across Victoria are now expected to return to normal rates and patterns.

Aqualink Activity Nodes

Node 1: 18 Nelson St, Darley 3340, Node 3: 48 Raglan St, Darley 3340, Node 4: 73 Nelson St, Darley 3340

The Growing Suburbs Fund will assist Moorabool Shire Council to create activity nodes along the Aqualink Linear Park to provide opportunities for play, socialisation, habitat, rest, and other recreational activities along the trail.

The scope of the project includes:

- Fitness equipment
- Garden beds and lawn areas
- Street furniture and fixtures
- Drinking fountains
- Tree planting
- Bike racks

Expected date of commencement: July 2023

Expected date of completion: September 2024

Total Project Cost: \$671,470

Growing Suburbs Fund: \$671,470

The other project in Moorabool Shire Council to receive funding from the 2022-23 Growing Suburbs Fund is:

- Bacchus Marsh Racecourse Recreation Reserve Community Pavilion (\$3,229,928)

¹ ABS Regional Population Growth, March 2022

² Victoria in Future, 2019



Figure 2 Project Sites



Figure 1 Concept Design Seating and Garden Beds

You can find out about other Growing Suburbs Fund projects at <https://www.localgovernment.vic.gov.au/grants/growing-suburbs-fund>.

For more information about the Growing Suburbs Fund, please contact gsf@ecodev.vic.gov.au.

Authorised by The Hon. Melissa Horne MP, Minister for Local Government

Department of Government Services
© Copyright State of Victoria,
Department of Government Services 2023

Except for any logos, emblems, trademarks, artwork, and photography this document is made available under the terms of the Creative Commons Attribution 3.0 Australia license.

This document is also available in an accessible format at dgs.vic.gov.au