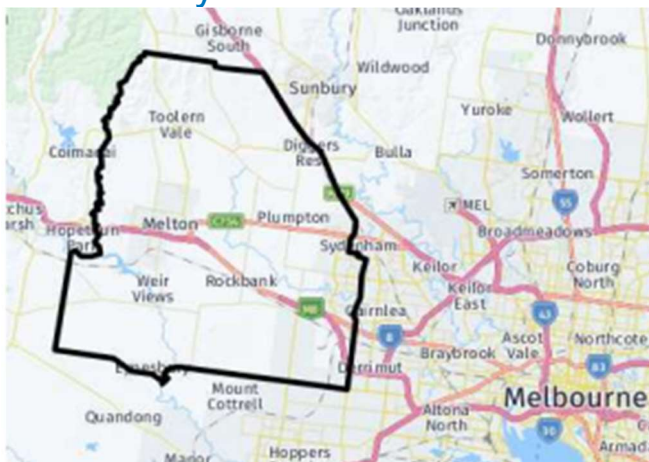


Growing Suburbs Fund 2022-23

The Growing Suburb Fund (GSF) is a \$425M contribution to support the delivery of high priority community infrastructure projects for Victoria's diverse and fast-growing outer suburbs. Designed to support the existing and future local infrastructure needs of Melbourne's interface and peri-urban communities, the GSF brings forward local infrastructure projects that are essential to the liveability of outer suburban families.

Melton City Council



Melton City Council is located approximately 40 kilometres west of central Melbourne and is one of the fastest growing interface councils. Strong residential growth is expected to continue, with a number of new suburbs under development.

Melton City Council is part of the interface council area and recorded a growth rate of 4.6% in 2019-20¹. The population is projected to grow from 172,500 in 2020 to about 332,051 or 92.5% per cent by 2036².

Victoria's population growth slowed during the pandemic period with the impact over this time mainly felt in the inner and middle suburbs of Melbourne; regional areas were less affected due to increased migration from Melbourne. Based on the latest available data, areas across Victoria are now expected to return to normal rates and patterns.

Plumpton Community Centre and Neighbourhood house

19 Pear Parade, Fraser Rise 3336

The Growing Suburbs Fund will assist Melton City Council to deliver an expanded community centre and neighbourhood house complete with multi-use and flexible spaces for community programs, services, and activities.

The project scope includes:

- Kindergarten and MCH rooms
- Consultation and community meeting rooms
- Office/planning rooms equip with furniture
- External play spaces
- Family room and breastfeeding space
- Kitchen, storage, and amenities
- Carparking and landscaping

Expected date of commencement: December 2023

Expected date of completion: January 2025

Total Project Cost: \$11,500,000

Growing Suburbs Fund: \$1,500,000

Other Contributions:

- Melton City Council \$6,000,000
- VSBA Building Blocks \$4,000,000

The other projects in Melton City Council to receive funding from the 2022-23 Growing Suburbs Fund are:

- Aintree Community Centre (\$1,500,000)
- Barwon Street Reserve Upgrade (\$250,000)
- Blackwood Drive Reserve Playspace (\$500,000)
- Hillside Recreation Reserve Park and Playspace (\$400,000)
- Weir Views Community Centre (\$1,500,000)

¹ ABS Regional Population Growth, March 2022

² Victoria in Future, 2019



Figure 1 - Concept design

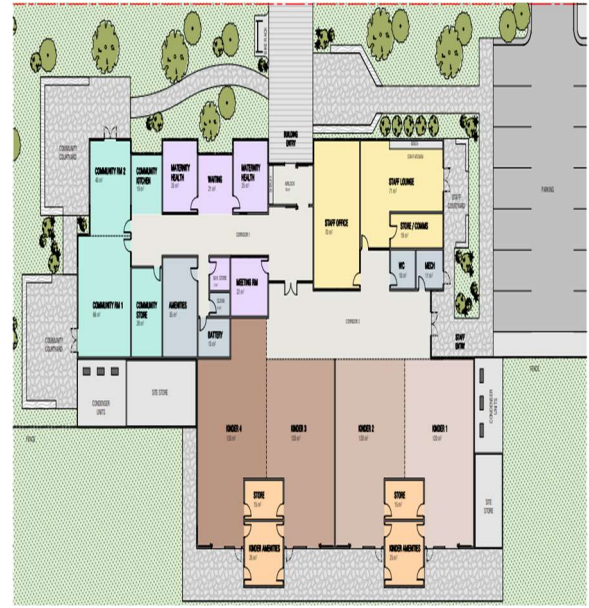


Figure 2 - Floor plan

You can find out about other Growing Suburbs Fund projects at <https://www.localgovernment.vic.gov.au/grants/growing-suburbs-fund>.

For more information about the Growing Suburbs Fund, you can contact the team at gsgf@ecodev.vic.gov.au.

Authorised by The Hon. Melissa Horne MP, Minister for Local Government

Department of Government Services
 © Copyright State of Victoria,
 Department of Government Services 2023

Except for any logos, emblems, trademarks, artwork, and photography this document is made available under the terms of the Creative Commons Attribution 3.0 Australia license.

This document is also available in an accessible format at dgs.vic.gov.au