

Growing Suburbs Fund 2021-22

The Growing Suburbs Fund is a contribution towards meeting critical local infrastructure needs for communities in Melbourne's diverse and fast-growing outer suburbs. It is positioned to quickly respond to the pressures being experienced by interface and peri-urban communities by bringing forward local infrastructure projects that will make a big difference in the day-to-day lives of outer suburban families.

Whittlesea City Council



Whittlesea City Council is located about 20 km north of the Melbourne Central Business District. The southern parts of the city are established urban areas and current residential developments are extending towards the north of the municipality. Whittlesea City Council is home to an ethnically diverse community, with more than half of the residents from non-English speaking backgrounds.

Whittlesea City Council is part of the interface council area and recorded a growth rate of 2.7% in 2019-20.¹ The population is projected to grow from 236,539 in 2020 to about 364,453 or 54.1% per cent by 2036.²

Victoria's population has witnessed a considerable slow-down in growth due to COVID and a pause in overseas migration. This is mostly felt in the inner/middle suburbs of Melbourne but is still evident in outer suburbs.

¹ ABS Regional Population Growth, March 2022

² Victoria in Future, 2019

South Morang Precinct Improvements

1-13 Gorge Road, South Morang 3752

The Growing Suburbs Fund will assist Whittlesea City Council in delivering the South Morang Precinct Improvements Project.

The South Morang Precinct Improvements project will deliver key infrastructure to reactivate the streetscape, stimulating the local economy, improving public safety and social and health outcomes for the locality.

As part of Whittlesea City Council's Local and Neighbourhood Centres Revitalisation Plan for shopping areas across the municipality, the project will deliver:

- New and wider pedestrian pavement spaces
- Additional pedestrian crossing points
- DDA compliant access for all abilities
- Gathering/seating/socialising nodes
- Internalised seating arrangements
- Large canopy trees and garden beds to provide shade and combat heat island effects
- Reorganised car parking arrangement to improve accessibility including disabled car parking spaces
- Water sensitive urban design treatments for car park run-off and known flooding issues to the south of the site.

Expected date of commencement: May 2023

Expected date of completion: December 2023

Total Project Cost: \$850,000

Growing Suburbs Fund: \$425,000

Other contributions:

Whittlesea City Council: \$425,000

The other projects in Whittlesea City Council to receive funding from the Growing Suburbs Fund 2021-22 are:

- Plenty Ranges Arts and Convention Centre Customer Experience Upgrade (\$225,000)
- Worchester Park Bushfire Regeneration (\$275,000)
- Patterson Drive Community Centre (\$2,000,000)
- Huskisson Reserve Pedestrian and Cycling Access (\$325,000)
- Community Energy Transition Program (\$250,000)

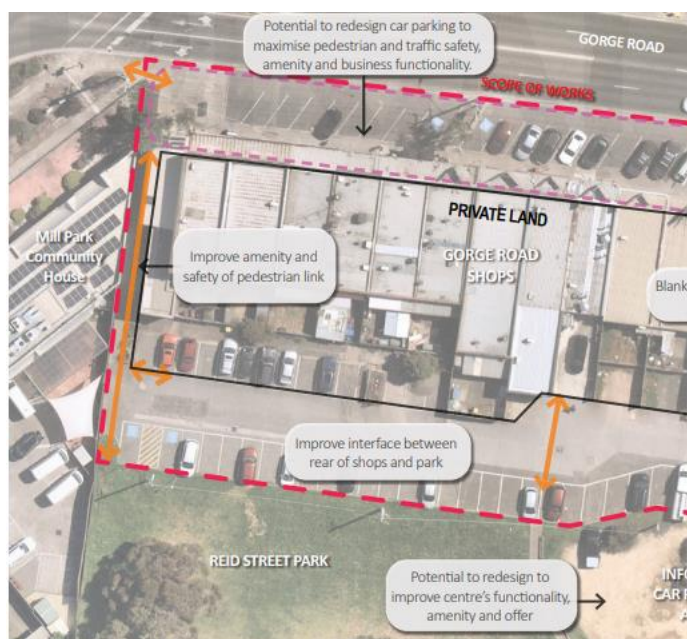


Figure 1: Site aerial

You can find out about other Growing Suburbs Fund projects at <https://www.localgovernment.vic.gov.au/grants/growing-suburbs-fund>

For more information regarding these projects contact the GSF team at gsf@ecodev.vic.gov.au

Authorised by the Hon Shaun Leane MP, Minister for Local Government and Suburban Development

Department of Jobs, Precincts and Regions
1 Spring Street Melbourne Victoria 3000
Telephone (03) 9651 9999

© Copyright State of Victoria,
Department of Jobs, Precincts and Regions 2022

Except for any logos, emblems, trademarks, artwork and photography this document is made available under the terms of the Creative Commons Attribution 3.0 Australia license.

This document is also available in an accessible format at djpr.vic.gov.au