

# Growing Suburbs Fund 2021-22

The Growing Suburbs Fund is a contribution towards meeting critical local infrastructure needs for communities in Melbourne's diverse and fast-growing outer suburbs. It is positioned to quickly respond to the pressures being experienced by interface and peri-urban communities by bringing forward local infrastructure projects that will make a big difference in the day-to-day lives of outer suburban families.

## Whittlesea City Council



Whittlesea City Council is located about 20 km north of the Melbourne Central Business District. The southern parts of the city are established urban areas and current residential developments are extending towards the north of the municipality. Whittlesea City Council is home to an ethnically diverse community, with more than half of the residents from non-English speaking backgrounds.

Whittlesea City Council is part of the interface council area and recorded a growth rate of 2.7% in 2019-20.<sup>1</sup> The population is projected to grow from 236,539 in 2020 to about 364,453 or 54.1% per cent by 2036.<sup>2</sup>

Victoria's population has witnessed a considerable slow-down in growth due to COVID and a pause in overseas migration. This is mostly felt in the inner/middle suburbs of Melbourne but is still evident in outer suburbs.

<sup>1</sup> ABS Regional Population Growth, March 2022

<sup>2</sup> Victoria in Future, 2019

## Patterson Drive Community Centre

Eucalyptus Drive, Olivine Estate, Donnybrook 3064

The Growing Suburbs Fund will assist Whittlesea City Council in delivering the Patterson Drive Community Centre.

The first community centre in Donnybrook, the Patterson Drive Community Centre will provide a range of community services including maternal and child health, library services, youth programs, training programs and social support programs for carers and the elderly.

The Patterson Drive Community Centre will comprise approximately 1790m<sup>2</sup> of internal space and 4680m<sup>2</sup> of external space and will deliver the following spaces:

- Three Kindergarten rooms
- Licensed playspace
- Maternal and Child Health consultation suites
- Maternal and Child Health Program and waiting room
- Reception and community information space
- Community kitchen
- Multipurpose activity rooms
- Staff office
- Large community hall
- Community lounge containing a small library collection, kiosk and study/maker space (Living Libraries Infrastructure Program)
- Parking bay for library bus and social support access
- Storage space
- Toilets
- Outside activity space
- Carpark and accessible pathways.

**Expected date of commencement:** July 2023

**Expected date of completion:** January 2025

**Total Project Cost:** \$12,609,000

**Growing Suburbs Fund:** \$2,000,000

**Other contributions:**

- \$709,500 from the Living Libraries Infrastructure Program 2021-22
- \$2,750,000 from Building Blocks Capital Grants Program (DET)
- \$7,149,500 from the City of Whittlesea.

Except for any logos, emblems, trademarks, artwork and photography this document is made available under the terms of the Creative Commons Attribution 3.0 Australia license.

This document is also available in an accessible format at [djpr.vic.gov.au](http://djpr.vic.gov.au)

**The other projects in Whittlesea City Council to receive funding from the Growing Suburbs Fund 2021-22 are:**

- Plenty Ranges Arts and Convention Centre Customer Experience Upgrade (\$225,000)
- Worchester Park Bushfire Regeneration (\$275,000)
- Huskisson Reserve Pedestrian and Cycling Access (\$325,000)
- South Morang Precinct Improvements (\$425,000)
- Community Energy Transition Program (\$250,000)

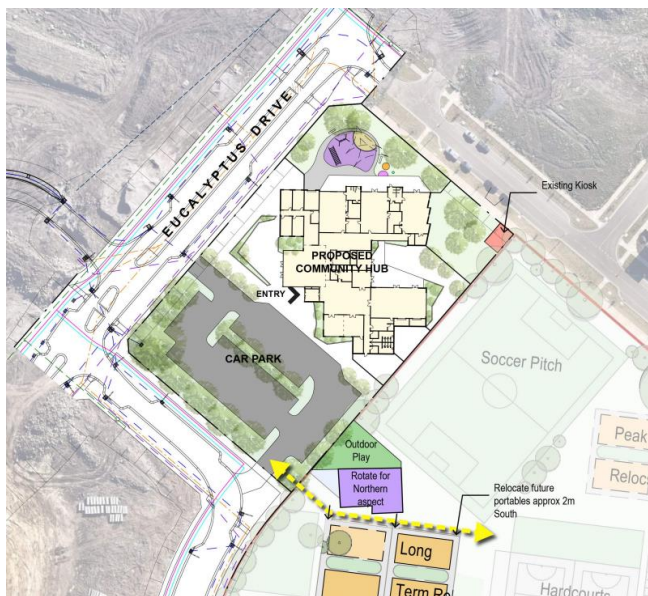


Figure 1: Concept design Mantric Architecture

You can find out about other Growing Suburbs Fund projects at <https://www.localgovernment.vic.gov.au/grants/growing-suburbs-fund>

For more information regarding these projects contact the GSF team at [gsf@ecodev.vic.gov.au](mailto:gsf@ecodev.vic.gov.au)

Authorised by the Hon Shaun Leane MP, Minister for Local Government and Suburban Development

Department of Jobs, Precincts and Regions  
1 Spring Street Melbourne Victoria 3000  
Telephone (03) 9651 9999

© Copyright State of Victoria,  
Department of Jobs, Precincts and Regions 2022