

Growing Suburbs Fund 2021-22

The Growing Suburbs Fund is a contribution towards meeting critical local infrastructure needs for communities in Melbourne's diverse and fast-growing outer suburbs. It is positioned to quickly respond to the pressures being experienced by interface and peri-urban communities by bringing forward local infrastructure projects that will make a big difference in the day-to-day lives of outer suburban families.

Casey City Council



Casey City Council is located in Melbourne's south-eastern suburbs, between 28 and 60 km from the Melbourne Central Business District. It is one of the fastest growing interface councils.

Casey City Council is part of the interface council area and recorded a growth rate of 3% in 2019-20.¹ The population is projected to grow from 364,600 in 2020 to about 522,251 or 43.2% per cent by 2036.²

Victoria's population has witnessed a considerable slow-down in growth due to COVID and a pause in overseas migration. This is mostly felt in the inner/middle suburbs of Melbourne but is still evident in outer suburbs.

¹ABS Regional Population Growth March 2022

²Victoria in Future, 2019

Gwendoline Children's Centre Upgrade

25 Gwendoline Drive, Berwick 3806

The Growing Suburbs Fund will assist Casey City Council to deliver a reconfigured and modernised Family & Children's Centre to meet the current and future needs of the growing community, addressing access, visibility, design, storage, and amenity issues.

This project will better support the delivery of essential family services including increased Kindergarten services, Maternal and Child Health services and community meeting spaces for the provision of intergenerational services and programs.

The project scope will include:

- A total renewal of the 4 kindergarten rooms and interconnected children's amenities
- Redesigning the MCH area, including an extension to the existing consulting rooms and a new kitchenette and waiting area
- A redevelopment of the existing meeting spaces and public amenities to meet building compliance and accessibility standards
- Reconfiguration and renewal of the existing 3 entry points/waiting areas into 2 separate airlocks to create better integration and connectedness throughout the building
- Replacement of internal signage, fittings, furnishings, and equipment
- Renewal of the external façade of the facility, inclusive of paving, signage, and landscaping to create stronger and safer connections to the facility.

Expected date of commencement:

September 2022

Expected date of completion: May 2023**Total Project Cost:** \$1,776,030**Growing Suburbs Fund:** \$926,000**Other contributions:**

- Casey City Council: \$850,030

The other projects in the City of Casey to receive funding from the Growing Suburbs Fund 2021-22 are:

- Ray Bastin Reserve Redevelopment Project (\$1,600,000)
- Tooradin Public Hall Upgrade (\$350,000)
- Myuna Farm Pavilion Improvements that support People living with Disabilities (\$351,105)

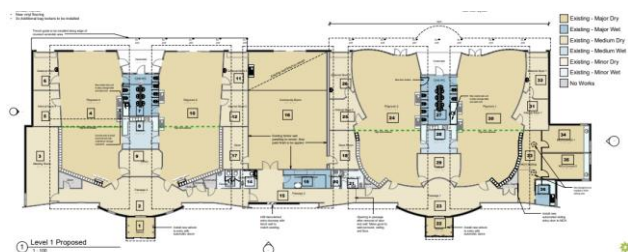


Figure 1: Concept Level 1

You can find out about other Growing Suburbs Fund projects at <https://www.localgovernment.vic.gov.au/grants/growing-suburbs-fund>

For more information regarding these projects contact the GSF team at gsf@ecodev.vic.gov.au

Authorised by the Hon Shaun Leane MP, Minister for Local Government and Suburban Development

Department of Jobs, Precincts and Regions
1 Spring Street Melbourne Victoria 3000
Telephone (03) 9651 9999

© Copyright State of Victoria,
Department of Jobs, Precincts and Regions 2022

Except for any logos, emblems, trademarks, artwork and photography this document is made available under the terms of the Creative Commons Attribution 3.0 Australia license.

This document is also available in an accessible format at djpr.vic.gov.au