

Growing Suburbs Fund

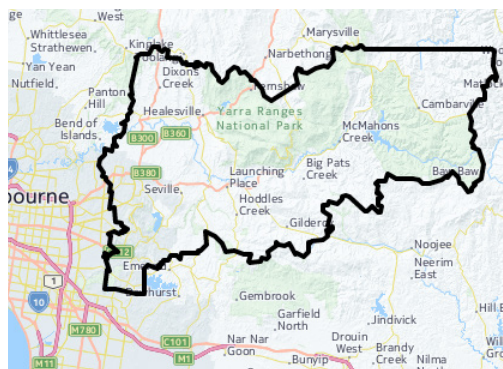
The Growing Suburbs Fund is providing much needed funding to help interface councils deliver new local infrastructure. The \$150 million investment is making a big difference in the day-to-day lives of outer suburban families by meeting critical local infrastructure needs for communities in Melbourne's diverse and fast-growing outer suburbs.



Changing Places – Yarra Glen

McKenzie Reserve, corner Bell Street and Anzac Ave, Yarra Glen VIC 3775

YARRA RANGES SHIRE COUNCIL



YARRA RANGES SHIRE COUNCIL

Yarra Ranges is located in Melbourne's outer east approximately 30 km from Melbourne's central business district and covers an area of 2,470 km². It is one of the most diverse municipalities in the state with over 55 suburbs, townships, small communities and rural areas. Approximately 70% of the shire's population live in the urban areas located in the west of the municipality which accounts for approximately 3% of its landmass.

Victoria in the Future, 2014 <http://profile.id.com.au/yarra-ranges>

PROJECT DESCRIPTION

The Growing Suburbs Fund will help Yarra Ranges Shire Council deliver a new Changing Places facility next to the existing toilets in McKenzie Reserve, Yarra Glen.

This facility will provide people of all abilities with dignified access to changing facilities, and enable more people to participate in social and recreational opportunities at McKenzie Reserve.

The Changing Places facility will include an electric height adjustable adult sized changing bench, an electric hoisting system, and enough room on both sides of the bench for a carer to assist.

Expected completion: Early 2018

Growing Suburbs Fund: \$125,000

Other Contributions: \$125,000

Other projects in Yarra Ranges Shire to receive funding from the 2016/17 Growing Suburbs Fund are:

- Belgrave South Community Sports Pavilion (\$500,000)
- Upwey Tecoma Community Recreational and Sporting Hub (\$1,000,000)
- Kilsyth Centre of Excellence – Eastern Ranges Regional Facilities Upgrade (\$900,000)

Read about other Growing Suburbs Fund Projects on www.localgovernment.vic.gov.au/gsf

For more information regarding this project contact Local Infrastructure, DELWP.
Email: gsf@delwp.vic.gov.au and Ph: 9948 8551