



Vicmap & The Victorian Local Government Grants Commission

Local Roads Data Reconciliation Project (LRDRP) Updates

Aastha Sharma & David Blain

Vicmap Spatial Analyst
LRDRP Program Manager (Vicmap)

Data & Digital
Investment & Technology
Department of Transport and
Planning

Manager, Vicmap Data
Automation & Integration

Data & Digital
Investment & Technology
Department of Transport and
Planning



Department
of Transport
and Planning

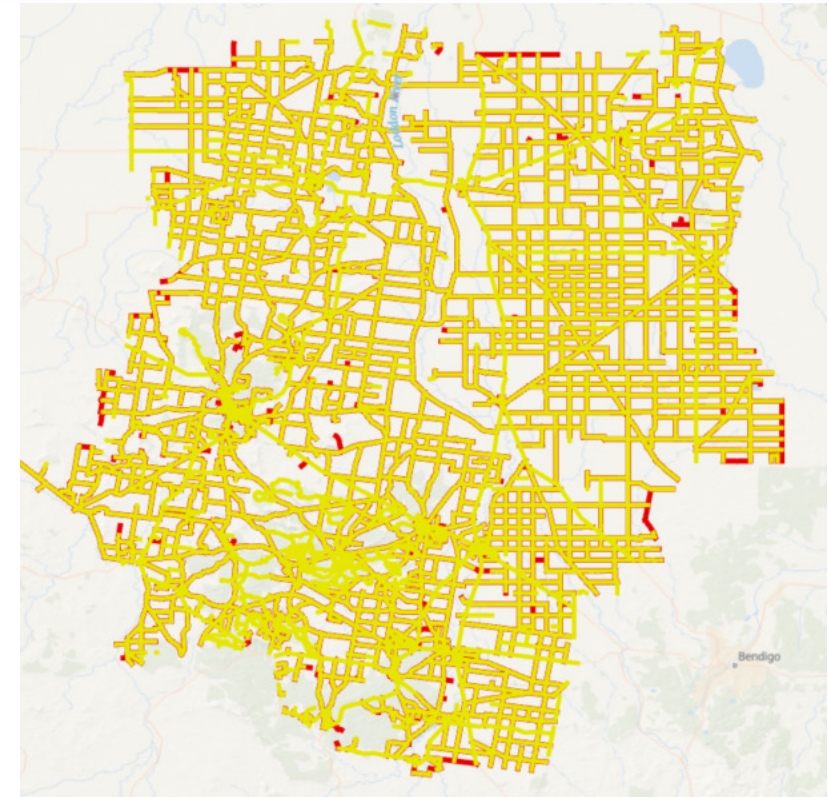
What is the Roads Reconciliation Program?

The Victorian council Local Roads Data Reconciliation Pilot aimed to **reconcile local road length** data collected by councils for the VLGGC with corresponding local road length data in **Vicmap**.

The use of Vicmap as the source of local road length data would ensure **robustness** in the data reported **annually** and could reduce the **administrative effort** required of **councils** each year.

Vicmap has worked with 5 LGAs to deliver **proof of concept** of reconciliation between LGA roads and Vicmap TR_ROADS.

Vicmap together with the **VLGGC** continues to work with councils to **support dataset reviews** and to support the navigation of **necessary roads attribution** that is key to delivering this program.



Local Roads Data Reconciliation Program- Key Fields

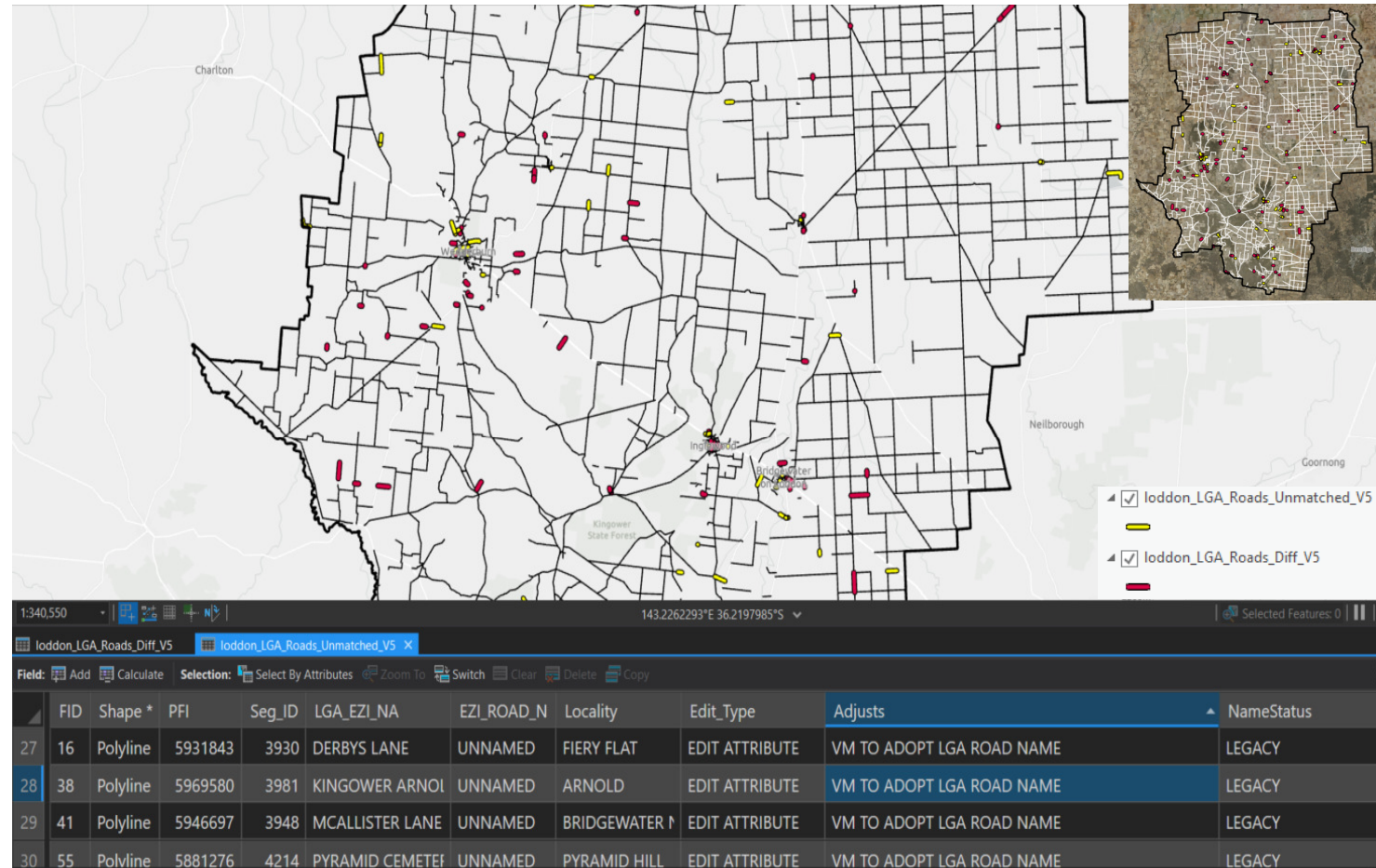
Fields identified during the pilot program as being key reconciliation fields/edit types for VGC3+ road length reporting included the following:

Primarily Spatial Edits:

- Road Lengths
- Road Removals
- Road Additions
- Road Class Reclassifications
- Road Seal Definitions
- Identification of restricted roads (Restricted Class 4 Roads)
- Gap in Laneway submissions to VES

Primarily Aspatial Edits:

- Road Names/Renaming/Adopting
- Road Responsible Authority Codes
- Road Coordinating Authority Codes



Updates on the Roads Program

Vicmap is currently **exploring** the option to conduct **aspatial attribution upload** into TR_ROADS. This is specifically for the following attribution fields:

- 1. Responsible Auth Code
- 2. Coordinating Auth Code

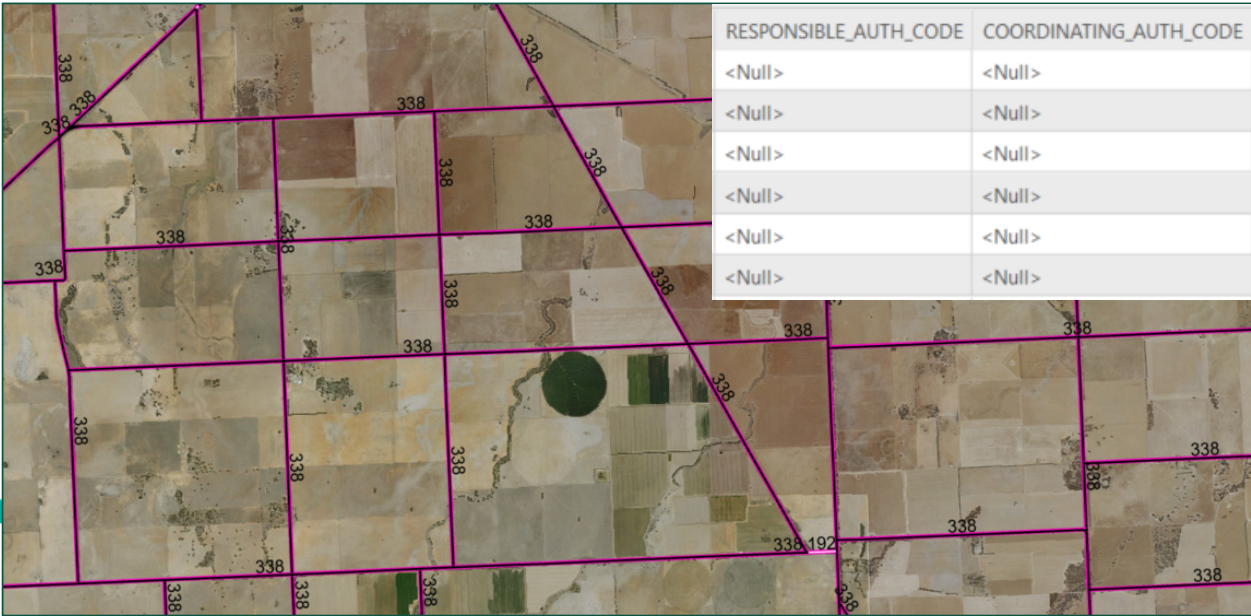
LGAs have **demonstrated capacity** to uptake the TR_ROADS dataset extract and update these fields within the dataset.

The **in-filled** TR_ROADS dataset from councils can be provided through the **Vicmap Editing Service (VES)** for review to be updated into the TR_ROADS Dataset in Vicmap.

Key Points:

- 1. See the Vicmap Transport Specification on DataShare or refer to the **datapack on the VLGGC Roads website** for a definition on the authority codes
- 2. Talk to your **neighbouring councils** and **agree** on border responsibilities and representation.

Feature Type	Attribute	Definition	Value
Road or Bridge	RESPONSIBLE_AUTH_CODE	The authority that is responsible for maintaining the road segment or asset.	Code from reference table VMREFTAB_FT_AUTHORITATIVE_ORGANISATION
	COORDINATING_AUTH_CODE	The authority that owns the road segment	



LGA Roads Information Requirements

Additional attribution to review based on council capacity (on-site at the LGA or outsourced):

- 1. Road Name (Do not include chainage, IDs, dashes in the same column)
- 2. Road Type (Identify simply as the road type or its accepted abbreviation (STREET, ST))
- 3. Class Code (Vicmap Road Classification REFTAB)
- 4. Road Seal (Vicmap Road Seal REFTAB)
- 5. Coordinating Auth Code + Responsible Auth Code Allocation (Vicmap unique allocated code per LGA)
Talk to your neighbouring LGAs and agree on border responsibilities and representation

ROAD_NAME *	ROAD_TYPE	CLASS_CODE *	ROAD_SEAL	COORDINATING_AUTH_CODE	RESPONSIBLE_AUTH_CODE
TUCKFIELD	STREET	3	1	<Null>	<Null>
MABEL	AVENUE	5	1	<Null>	<Null>
TAN	TRACK	9	2	<Null>	<Null>
TULK	STREET	5	1	<Null>	<Null>

Vicmap Reference Tables

The following fields in the Vicmap TR ROADS Dataset also host Reference Tables which can be referenced for assigning information into TR_ROADS.

1. Class Code (Vicmap Road Classification REFTAB)
2. Road Seal (Vicmap Road Seal REFTAB)
3. Coordinating Auth Code + Responsible Auth Code Allocation (Vicmap unique allocated code per LGA)
Talk to your neighbouring LGAs and agree on border responsibilities and representation.

VM Authoritative Organisation Codes Tables

FT_AUTHORITATIVE_ORGANISATION						
Field: Add Calculate Selection: Select By Attributes Zoom To Switch Clear Delete Copy Rows: Insert						
	OBJECTID *	AUTH_ORG_CODE	AUTH_ORG	AUTH_ORG_LONGNAME	UFI *	UFI_CREATED
104	122	119	LSV	Life Saving Victoria	10017467	25/08/2009 11:52:05 AM
105	60	338	LODDON	Loddon Shire	10016690	6/11/2008 2:02:58 PM
106	194	201	LMURW	Lower Murray and Urban Rural Water	10220975	21/10/2022 9:03:28 AM
107	61	339	MACEDON RANGES	Macedon Ranges Shire	10016691	6/11/2008 2:02:58 PM

VMREFTAB.TR_ROAD_CLASS Reference Table

ROAD_CLASS_CODE	ROAD_CLASS	DESCRIPTION
0	FREEWAY	Hard surface formation, high-volume, high-speed roads declared as "Freeway"; comprising dual carriageway and full access control and grade separated intersections, i.e. no direct access from adjoining properties or side roads and all crossings are by means of overpass or underpass bridges with traffic entering or leaving carriageways by means of ramps. Single carriageway sections forming part of declared freeways may be included within this category.
1	HIGHWAY	Hard surface roads which: Are of importance in a national sense, and/or Are of a major interstate through route, and/or Are principal connector roads between capitals and/or major regions and/or key towns.
2	ARTERIAL	Well maintained and widely used hard surface formation roads which are major connectors between: Freeways and/or National Highways, and/or Major centres, and/or key towns, or Have major tourist importance or Which main function is to form the principal avenue of communication for metropolitan traffic movements, not catered for by freeways.
3	SUB-ARTERIAL	Hard surface formation road, which acts as: A connector between highways and/or arterial roads, or An alternate route for class 2 roads, or A principal avenue for massive traffic movements.
4	COLLECTOR	Hard surface or improved, loose surface formation road acting to: Provide for traffic movement (connects class 3 to class 5), or To distribute traffic to local street systems.
5	LOCAL	Hard surface or improved, loose surface formation road providing access to properties or public land. Caters for moderate travel speed of a full range of vehicles including large vehicles. All weather two-lane road includes sealed, formed and gravelled or single lane sealed road with gravel shoulders
6	MINOR	A hard surface improved or unformed road usually with a dry weather or natural surface. A road that services a small number of properties, is a dead-end road, or provides access to low to moderate use sites within public land. Caters for low travel speed and a range of vehicles in dry weather. It may be seasonally closed.

VMREFTAB.TR_ROAD_SEAL Reference Table

ROAD_SEAL_CODE	ROAD_SEAL	DESCRIPTION
1	SEALED	Road Sealed (sprayed seals, asphalt, or concrete)
2	UNSEALED	Road Unsealed (includes rock or processed gravel)
3	UNKNOWN	Unknown
4	NATURAL	A formed or unformed road consisting of locally available earth material not included in unsealed

Important Links

Vicmap Transport TR_Roads Data extract can be found at the following website:

<https://datashare.maps.vic.gov.au/search?q=vicmap%20transport>

Vicmap Transport TR_ROADS Dataset specification:

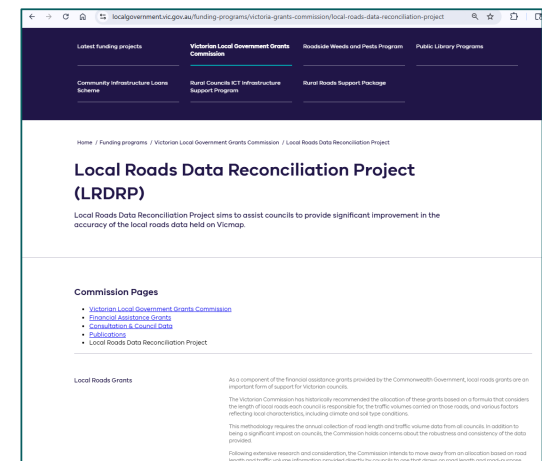
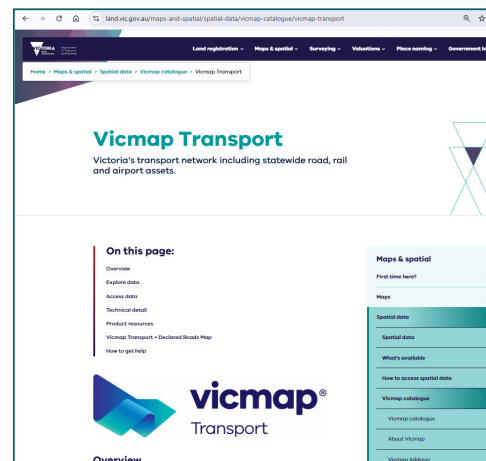
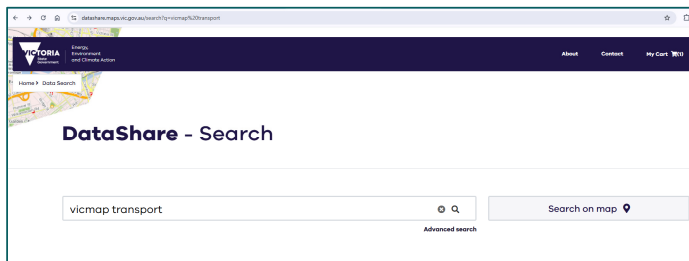
<https://www.land.vic.gov.au/maps-and-spatial/spatial-data/vicmap-catalogue/vicmap-transport>

Local Government- Local Roads Data Reconciliation Project (LRDRP) website:

<https://www.localgovernment.vic.gov.au/funding-programs/victoria-grants-commission/local-roads-data-reconciliation-project>

Vicmap Editing Service:

<https://ves.land.vic.gov.au/login>





Thank you

If you would like to contact the Vicmap team- Aastha Sharma or David Blain in relation to this program, please send your enquiry to the Vicmap Helpdesk and quote “LRDRP”: vicmap.help@transport.vic.gov.au

If you need assistance in gaining access to Vicmap Editing Service (VES) please send a request through the Vicmap Helpdesk
Vicmap.help@transport.vic.gov.au

Department of Government Services Program Manager Contact:
Julia.keeble@dgs.vic.gov.au

Disclaimer

The State of Victoria does not warrant the fitness of Vicmap® products and services for any particular purpose. You must make an independent assessment as to the fitness of Vicmap® products and services for your purposes.

