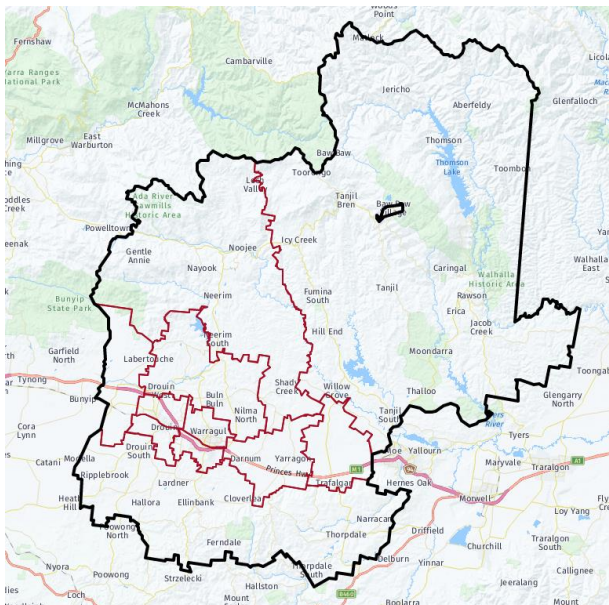


Growing Suburbs Fund 2020-21

The Growing Suburbs Fund is a contribution towards meeting critical local infrastructure needs for communities in Melbourne's diverse and fast-growing outer suburbs. It is positioned to quickly respond to the pressures being experienced by interface and peri-urban communities by bringing forward local infrastructure projects that will make a big difference in the day-to-day lives of outer suburban families.



Longwarry Early Learning Centre 4 Ford Place, Longwarry 3816

The Growing Suburbs Fund will assist the Baw Baw Shire Council to extend the Longwarry Early Learning Centre to cater for the growing population and to provide a much needed community space. The proposed design will expand the existing facility to a dual room facility with 48 licenced places. This will enable enrolments of up to 96 children across the rooms. The design allows for flexible use of spaces, with connected indoor and outdoor spaces.

Longwarry is one of the fastest growing towns in Baw Baw Shire with many young families choosing to make their homes there. This project will see the build completed for a 2022 kindergarten intake, therefore addressing immediate and upcoming demand.

While the primary use of the expanded Longwarry ELC will be for early years services, outside of these times the ELC will be available for community use. This will be a huge asset for the town of Longwarry, providing a much-needed meeting space and place for people to come together.

Expected date of commencement:

December 2020

Expected date of completion: September 2021

Total Project Cost: \$1,000,000

Growing Suburbs Fund: \$500,000

Other contributions:

- Bass Coast Shire Council \$500,000

Baw Baw Council Name

Baw Baw Shire is located in the West Gippsland region of Victoria, about 100 kilometres east of the Melbourne CBD. Baw Baw Shire is bounded by the Yarra Ranges Council area and Mansfield Shire in the north, Wellington Shire and Latrobe City in the east, South Gippsland Shire in the south, and Cardinia Shire in the west.

Known as one of Victoria's peri-urban councils, the current population of 53,396 is expected to grow significantly to 75,819 by 2036.¹

¹ Victoria in Future, 2019

