

# Growing Suburbs Fund 2020-21 Round 2

The Growing Suburbs Fund is a contribution towards meeting critical local infrastructure needs for communities in Melbourne's diverse and fast-growing outer suburbs. It is positioned to quickly respond to the pressures being experienced by interface and peri-urban communities by bringing forward local infrastructure projects that will make a big difference in the day-to-day lives of outer suburban families.

## Whittlesea City Council



Whittlesea City Council is located about 20 km north of the Melbourne Central Business District. The southern parts of the city are established urban areas and current residential developments are extending towards the north of the municipality.

Whittlesea City Council is home to an ethnically diverse community, with more than half of the residents from non-English speaking backgrounds. In 2018, the population of Whittlesea City Council grew 3.5 per cent compared with the national average of 1.6 per cent. The population is projected to grow by 63.2 percent from around 223,300 in 2018, to about 364,500 in 2036<sup>1</sup>.

## MERNDA ADVENTURE PARK PUBLIC AMENITY

146W Mernda Village Drive Mernda 3754

The Growing Suburbs Fund will assist Whittlesea City Council to deliver a two-cubicle public amenity facility to service the needs of the growing Mernda community using the regional park and play space.

The project will include:

- Two unisex accessible cubicles with baby change table facilities
- A 2,000L slimline water tank and underground connection services
- DDA compliant access paths from the existing car park to the new public amenities

**Expected date of commencement:** December 2021

**Expected date of completion:** March 2022

**Total Project Cost:** \$300,000

**Growing Suburbs Fund:** \$150,000

**Other contributions:**

- Whittlesea City Council: \$150,000

**The other projects in Whittlesea City Council to receive funding from the Growing Suburbs Fund 2020-21 Round 2 are:**

- Kelynack Recreation Reserve Play Space and Multi Play Area Redevelopment (\$675,000)
- Whittlesea Public Gardens Skate Park and Urban Zone (\$650,000)
- Norris Bank Reserve West Precinct (\$600,000)
- Redleap Recreation Reserve Upgrade (\$525,000)
- Quarry Hills Regional Park – Connecting Trails (\$322,000)

<sup>1</sup> Victoria in the Future, 2019

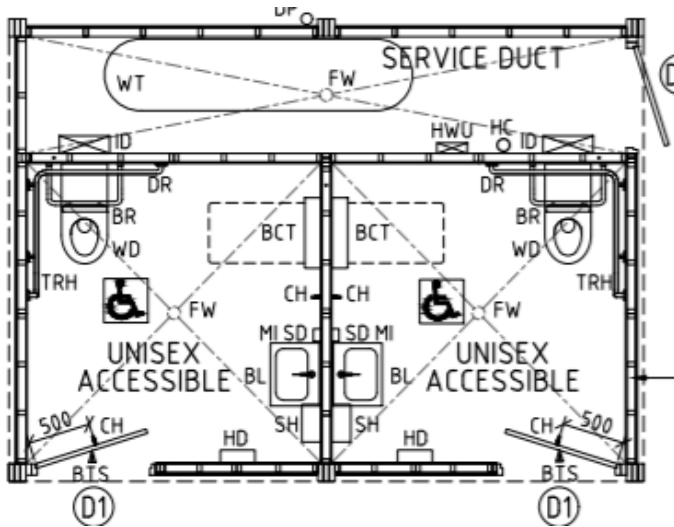


Figure 1: Concept design

You can find out about other Growing Suburbs Fund projects at <https://www.localgovernment.vic.gov.au/grants/growing-suburbs-fund>

For more information regarding these projects contact the GSF team at [gsf@ecodev.vic.gov.au](mailto:gsf@ecodev.vic.gov.au)

Authorised by the Hon Shaun Leane MP, Minister for Local Government and Suburban Development

Department of Jobs, Precincts and Regions  
 1 Spring Street Melbourne Victoria 3000  
 Telephone (03) 9651 9999  
 © Copyright State of Victoria,  
 Department of Jobs, Precincts and Regions 2019

Except for any logos, emblems, trademarks, artwork and photography this document is made available under the terms of the Creative Commons Attribution 3.0 Australia license.

This document is also available in an accessible format at [djpr.vic.gov.au](http://djpr.vic.gov.au)