

# Growing Suburbs Fund

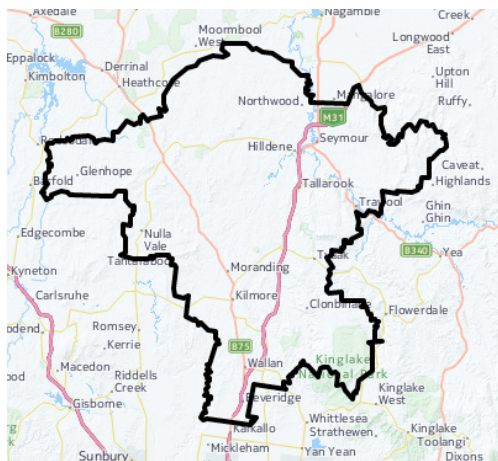
The Growing Suburbs Fund is providing much needed funding to help interface councils deliver new local infrastructure. The \$150 million investment is making a big difference in the day-to-day lives of outer suburban families by meeting critical local infrastructure needs for communities in Melbourne's diverse and fast-growing outer suburbs.



## Greater Beveridge Community Centre

Corner of Mandalay Circuit and Lithgow Street, Beveridge 3753

MITCHELL SHIRE COUNCIL



### MITCHELL SHIRE COUNCIL

Mitchell Shire is located approximately 80 km north of Melbourne, abutting the northern borders of Hume City Council. It is characterised by a significant growth corridor in the southern area of the shire and rural areas to the north.

The local economy is primarily agriculture and food manufacturing. It covers an area of 2,862 sq km with a population of approximately 40,000 which is expected to grow to more than 89,000 by 2036<sup>1</sup>.

<sup>1</sup> Victoria in the Future, 2014 <http://profile.id.com.au/mitchell>

### PROJECT DESCRIPTION

Funding from the Growing Suburbs Fund will help Mitchell Shire Council to build the Greater Beveridge Community Centre. This will be an integrated, multi-purpose facility with:

- Two kindergarten rooms
- Two maternal and child health rooms; and
- A youth space.

The youth space will include an office, two multipurpose rooms, a commercial kitchen, two consulting rooms, and an internal street that will be used as a gathering space.

Construction of the multipurpose Community Centre will create a welcoming, vibrant, inclusive hub that brings children, young people, families and older residents together.

Servicing a population of over 21,000 people across Beveridge and surrounding areas, the centre will offer services including early learning, maternal and child health, child and youth programs, community health and wellbeing, lifelong learning opportunities, community gatherings, and social connection.

**Expected completion: Late 2018**

**Growing Suburbs Fund: \$2,140,000**

**Other Contributions: \$4,600,000**

Other projects in Mitchell Shire to receive funding from the 2016/17 Growing Suburbs Fund are:

- Wallan Town Centre Heart Public Realm Project (\$2,191,569)
- Broadford Community Centre Revitalisation (\$565,000)

Read about other Growing Suburbs Fund Projects on [www.localgovernment.vic.gov.au/gsf](http://www.localgovernment.vic.gov.au/gsf)

For more information regarding this project contact Local Infrastructure, DELWP.  
Email: [gsf@delwp.vic.gov.au](mailto:gsf@delwp.vic.gov.au) and Ph: 9948 8551