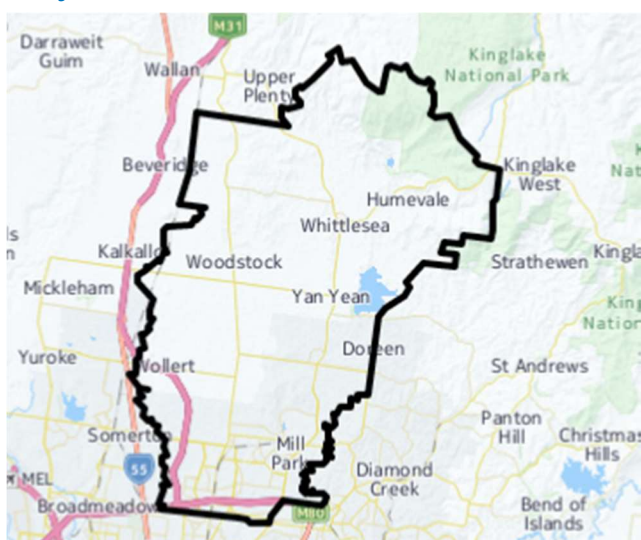


Growing Suburbs Fund 2022-23

The Growing Suburbs Fund (GSF) is a \$425M contribution to support the delivery of high priority community infrastructure projects for Victoria's diverse and fast-growing outer suburbs. Designed to support the existing and future local infrastructure needs of Melbourne's interface and peri-urban communities, the GSF brings forward local infrastructure projects that are essential to the liveability of outer suburban families.

City of Whittlesea



City of Whittlesea is located about 20 km north of the Melbourne Central Business District. The southern parts of the city are established urban areas and current residential developments are extending towards the north of the municipality. City of Whittlesea is home to an ethnically diverse community, with more than half of the residents from non-English speaking backgrounds.

City of Whittlesea is part of the interface council area and recorded a growth rate of 2.7% in 2019-20¹. The population is projected to grow from 236,539 in 2020 to about 364,453 or 54.1% per cent by 2032².

Victoria's population growth slowed during the pandemic period with the impact over this time mainly felt in the inner and middle suburbs of Melbourne; regional areas were less affected due to increased migration from Melbourne. Based on the latest available data, areas across Victoria are now expected to return to normal rates and patterns.

Whittlesea Township Park – Connecting Community Through Improved Access

2 Forest Street, Whittlesea 3757

The Growing Suburbs Fund will assist the City of Whittlesea to provide safe and accessible walking and cycling paths to connect the residents of Eastern Hill with the educational, commercial and community facilities in the Whittlesea Township centre.

The scope of the project includes:

- A 10m long and 4.5m wide concrete culvert bridge crossing the Plenty River
- Shared path network, lighting, and rest stops
- Drainage, kerb, and channel works to mitigate overland flooding issues
- Way finding and directional map-based signage
- Native tree planting and pedestrian counter

Expected date of commencement: November 2023

Expected date of completion: June 2024

Total Project Cost: \$1,000,000

Growing Suburbs Fund: \$500,000

Other contributions:

- City of Whittlesea: \$500,000

The other projects in the City of Whittlesea to receive funding from the 2022-23 Growing Suburbs Fund are:

- Epping Community Services Hub Refurbishment (\$375,000)
- Mill Park Reserve Connecting Shared Trails (\$475,000)
- Riverside Community Activity Centre and Reserve Upgrades (\$500,000)
- Community Energy Transition Program (\$250,000)

¹ ABS Regional Population Growth, March 2022

² Victoria in Future, 2019

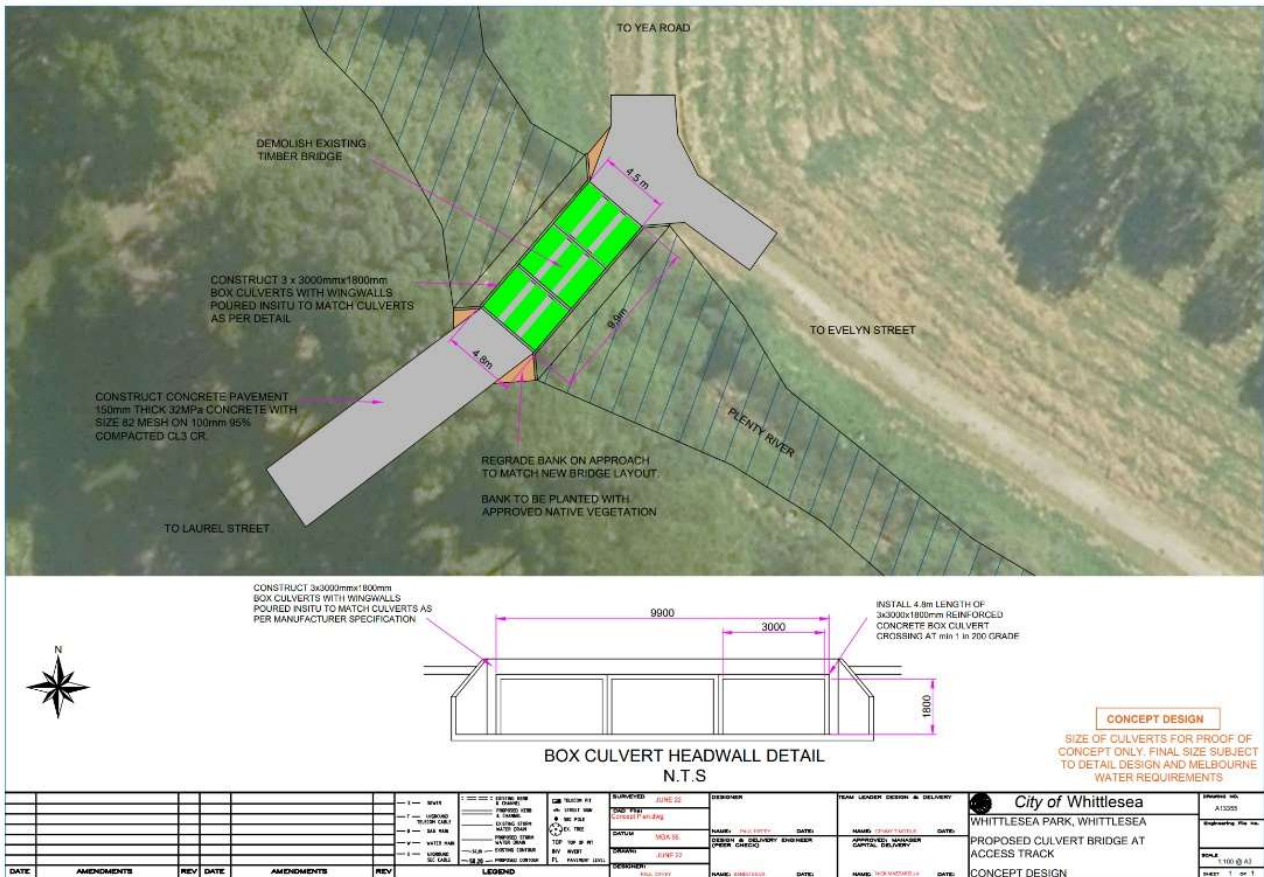


Figure 1 Bridge Concept Plan

You can find out about other Growing Suburbs Fund projects at <https://www.localgovernment.vic.gov.au/grants/growing-suburbs-fund>.

For more information about the Growing Suburbs Fund, please contact gsf@ecodev.vic.gov.au

Authorised by The Hon. Melissa Horne MP, Minister for Local Government

Department of Government Services
 © Copyright State of Victoria,
 Department of Government Services 2023

Except for any logos, emblems, trademarks, artwork, and photography this document is made available under the terms of the Creative Commons Attribution 3.0 Australia license.

This document is also available in an accessible format at dgs.vic.gov.au