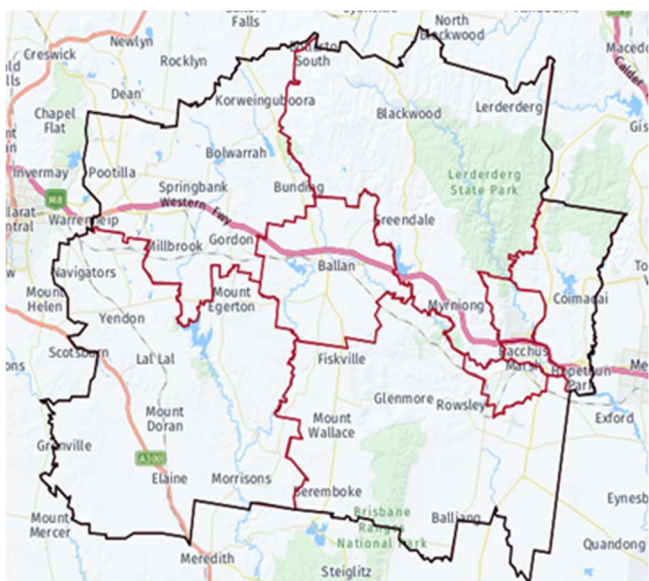


Growing Suburbs Fund 2022-23

The Growing Suburb Fund (GSF) is a \$425M contribution to support the delivery of high priority community infrastructure projects for Victoria's diverse and fast-growing outer suburbs. Designed to support the existing and future local infrastructure needs of Melbourne's interface and peri-urban communities, the GSF brings forward local infrastructure projects that are essential to the liveability of outer suburban families.

Moorabool Shire Council



Moorabool Shire is located in south-western Victoria, about 80 kilometres west of the Melbourne CBD and borders the City of Ballarat to the west.

Known as one of Victoria's peri-urban councils, the area recorded a growth rate of 2.7% in 2019-20¹. The current population of 36,013 is expected to grow to 49,939 or 38.7% by 2036².

Victoria's population growth slowed during the pandemic period with the impact over this time mainly felt in the inner and middle suburbs of Melbourne; regional areas were less affected due to increased migration from Melbourne. Based on the latest available data, areas across Victoria are now expected to return to normal rates and patterns.

Bacchus Marsh Racecourse Recreation Reserve Community Pavilion

Bacchus Marsh-Balliang Road, Maddingley 3340

The Growing Suburbs Fund will assist Moorabool Shire Council to deliver a community pavilion to support a broad range of community groups and members of all ages and abilities. The pavilion will improve community access, connection, and inclusion within the community.

The scope of the project includes:

- A community space and meeting rooms
- A family respite room
- A kitchen and supporting amenities
- A storeroom
- Change rooms with supporting amenities
- Equipment storage areas
- First aid room
- Covered and terraced viewing areas

Expected date of commencement: November 2023

Expected date of completion: June 2025

Total Project Cost: \$7,437,501

Growing Suburbs Fund: \$3,229,928

Other contributions:

- Moorabool Shire Council \$3,207,573
- Sport and Recreation Victoria: \$1,000,000

The other project in Moorabool Shire Council to receive funding from the 2022-23 Growing Suburbs Fund is:

- Aqualink Activity Node (\$671,470)

¹ ABS Regional Population Growth, March 2022

² Victoria in Future, 2019



Figure 1 Concept design side elevation

You can find out about other Growing Suburbs Fund projects at <https://www.localgovernment.vic.gov.au/grants/growing-suburbs-fund>.

For more information about the Growing Suburbs Fund, please contact gsf@ecodev.vic.gov.au.

Authorised by The Hon. Melissa Horne MP, Minister for Local Government

Department of Jobs, Government Services
© Copyright State of Victoria,
Department of Government Services 2023

Except for any logos, emblems, trademarks, artwork, and photography this document is made available under the terms of the Creative Commons Attribution 3.0 Australia license.

This document is also available in an accessible format at dgs.vic.gov.au