

Growing Suburbs Fund 2021-22

The Growing Suburbs Fund is a contribution towards meeting critical local infrastructure needs for communities in Melbourne's diverse and fast-growing outer suburbs. It is positioned to quickly respond to the pressures being experienced by interface and peri-urban communities by bringing forward local infrastructure projects that will make a big difference in the day-to-day lives of outer suburban families.

Nillumbik Shire Council



Nillumbik Shire Council is located 25 km north-east of the Melbourne Central Business District, and the southern boundary is the Yarra River. It is predominantly urban to the South while the north of the municipality includes significant features like the Kinglake National Park and Sugarloaf Reservoir.

Nillumbik Shire Yarra Ranges Shire Council is part of the interface council area and recorded a growth rate of 0.2% in 2019-20.¹ The population is projected to grow from 65,219 in 2020 to about 70,314 or 7.8% per cent by 2036.²

Victoria's population has witnessed a considerable slow-down in growth due to COVID and a pause in overseas migration. This is mostly felt in the inner/middle suburbs of Melbourne but is still evident in outer suburbs.

¹ ABS Regional Population Growth, March 2022

² Victoria in Future, 2019

Hurstbridge Men's Shed

12 Arthurs Creek Road, Hurstbridge 3099

The Growing Suburbs Fund will assist Nillumbik Shire Council to deliver an inclusive community facility.

The project will construct a new Men's Shed to support the Hurstbridge Men's Shed Group's current and future members. The aim of the new facility is to improve social interaction and mental health for community members of the Hurstbridge and adjacent communities.

The shed will include:

- Kitchen
- Amenities
- Break-out space
- Outdoor space
- Main works area
- Storage
- Accessible paths
- Carparking (including accessible spaces)

Expected date of commencement: August 2022

Expected date of completion: July 2023

Total Project Cost: \$664,352

Growing Suburbs Fund: \$364,352

Other contributions:

- Nillumbik Shire Council: \$300,000

Nillumbik Shire Council will also receive funding for the following project from the Growing Suburbs Fund 2021-22:

- Diamond Hills Preschool Redevelopment Project (\$2,915,117)

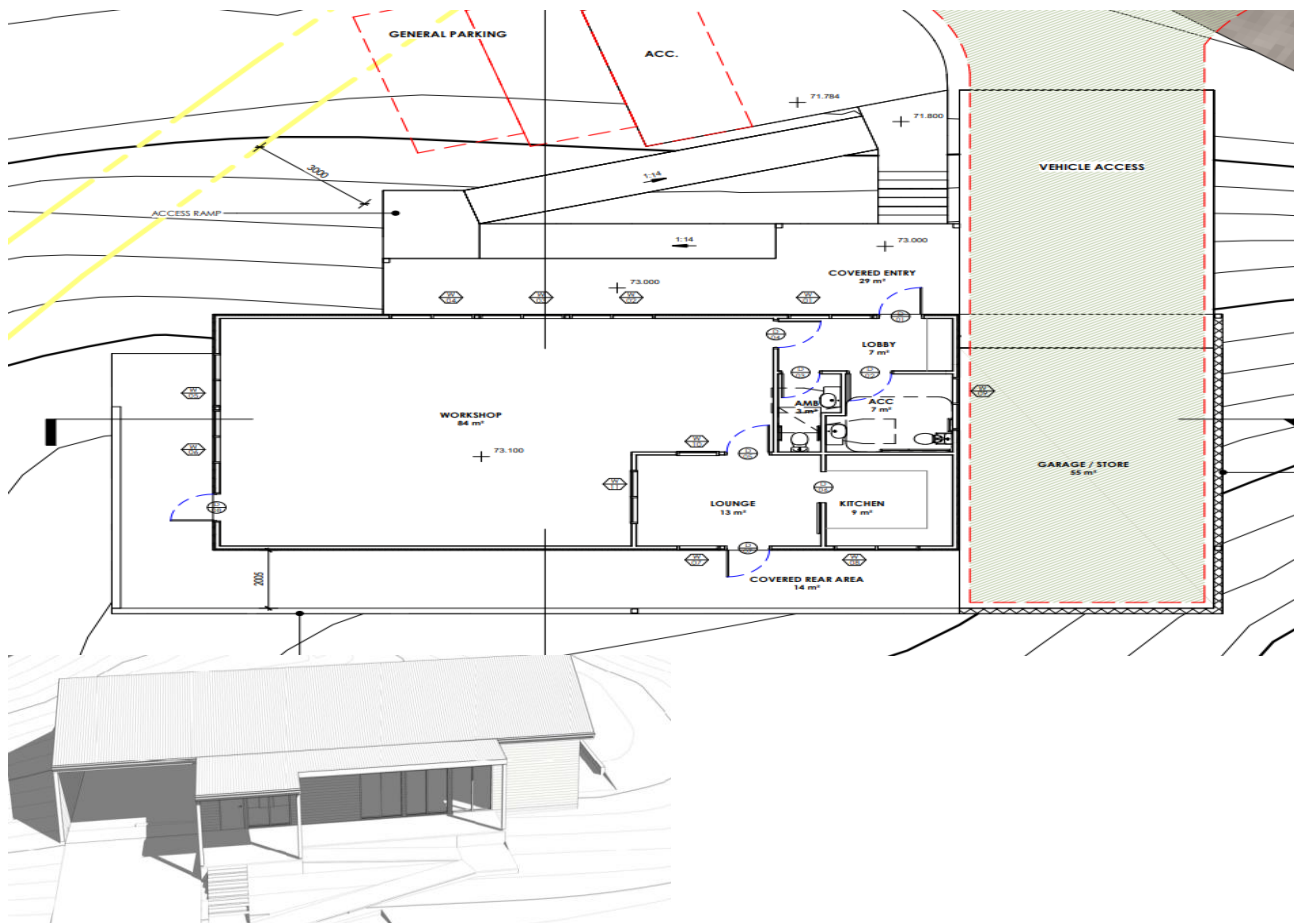


Figure 1: Concept design Dbarchitects

You can find out about other Growing Suburbs Fund projects at <https://www.localgovernment.vic.gov.au/grants/growing-suburbs-fund>

For more information regarding these projects contact the GSF team at gsf@ecodev.vic.gov.au

Authorised by the Hon Shaun Leane MP, Minister for Local Government and Suburban Development

Department of Jobs, Precincts and Regions

1 Spring Street Melbourne Victoria 3000

Telephone (03) 9651 9999

© Copyright State of Victoria,

Department of Jobs, Precincts and Regions 2022

Except for any logos, emblems, trademarks, artwork and photography this document is made available under the terms of the Creative Commons Attribution 3.0 Australia license.

This document is also available in an accessible format at djpr.vic.gov.au