

# Growing Suburbs Fund 2022-23

The Growing Suburb Fund (GSF) is a \$425M contribution to support the delivery of high priority community infrastructure projects for Victoria's diverse and fast-growing outer suburbs. Designed to support the existing and future local infrastructure needs of Melbourne's interface and peri-urban communities, the GSF brings forward local infrastructure projects that are essential to the liveability of outer suburban families.

## Mornington Peninsula Shire Council



Mornington Peninsula Shire is situated on a promontory located more than 40 km to the south-east of Melbourne, with more than 190 km of coastal boundaries. It is characterised by a mix of urban areas, resort towns, tourist developments and rural land. The Peninsula is one of the major holiday and retirement destinations for Melbournians.

Mornington Peninsula Shire Council is part of the interface council area and recorded a growth rate of 0.7% in 2019-20<sup>1</sup>. The population is projected to grow from 168,862 in 2020 to about 200,365 or 18.7% per cent by 2036<sup>2</sup>.

Victoria's population growth slowed during the pandemic period with the impact over this time mainly felt in the inner and middle suburbs of Melbourne; regional areas were less affected due to increased migration from Melbourne. Based on the latest available data, areas across Victoria are now expected to return to normal rates and patterns.

## Hillview Community Reserve Activation

205 Boundary Road, Dromana 3936

The Growing Suburbs Fund will assist Mornington Peninsula Shire Council to activate the Hillview community reserve to boost tourism and foster participation in healthy outdoor active and passive recreation, while enhancing the cultural and heritage connections of the site.

### The scope of the project includes:

- A playground incorporating both nature-based and traditional play components inclusive of junior and senior adventure components
- A connecting loop trail around the reserve
- Art/garden installation
- All-access parking

**Expected date of commencement:** October 2023

**Expected date of completion:** June 2024

**Total Project Cost:** \$3,778,371

**Growing Suburbs Fund:** \$2,600,000

### Other contributions:

- Mornington Peninsula Shire Council: \$1,178,371

### The other projects in Mornington Peninsula Shire Council to receive funding from the 2022-23 Growing Suburbs Fund are:

- Alexandra Park Community Health Hub (\$2,900,000)
- Olivia Way Hastings New Playground (\$246,997)

<sup>1</sup> ABS Regional Population Growth March 2022

<sup>2</sup> Victoria in Future, 2019



Figure 1 Activity area location

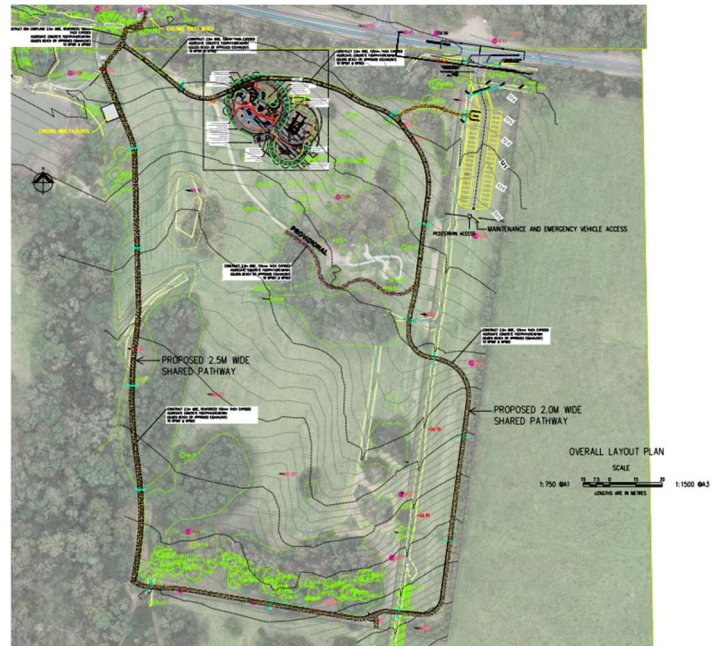


Figure 2 Layout Plan

You can find out about other Growing Suburbs Fund projects at <https://www.localgovernment.vic.gov.au/grants/growing-suburbs-fund>.

For more information about the Growing Suburbs Fund, please contact [gsf@ecodev.vic.gov.au](mailto:gsf@ecodev.vic.gov.au).

Authorised by The Hon. Melissa Horne MP, Minister for Local Government

Department of Government Services  
© Copyright State of Victoria,  
Department of Government Services 2023

Except for any logos, emblems, trademarks, artwork, and photography this document is made available under the terms of the Creative Commons Attribution 3.0 Australia license.

This document is also available in an accessible format at [dgs.vic.gov.au](https://dgs.vic.gov.au)