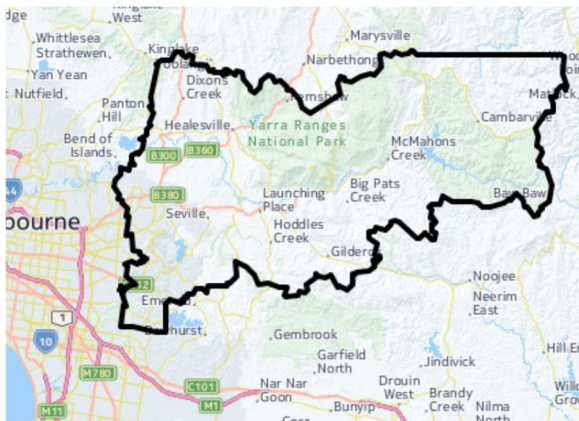


The Growing Suburbs Fund is a contribution towards meeting critical local infrastructure needs for communities in Melbourne's diverse and fast-growing outer suburbs. It is positioned to quickly respond to the pressures being experienced by interface communities by bringing forward local infrastructure projects that will make a big difference in the day-to-day lives of outer suburban families.



Yarra Ranges Shire Council is located in Melbourne's outer east between 30 and 110 km from the Central Business District. It covers an area of 2,470 km¹¹. Around 70 per cent of the Council's population live in the urban areas, which represent approximately three per cent of its landmass to the west of the municipality. The remaining population is distributed throughout rural areas. The municipality is home to significant natural reserves and boasts popular tourist areas such as the Dandenong Ranges and the Upper Yarra Valley.

Yarra Ranges is part of the interface council area and recorded a growth rate of 1.1 per cent in 2017. The population is forecasted to grow from 157,000 in 2017 to about 170,000, or 8 per cent, by 2031.

Warburton Mountain Bike Destination

Warburton and surrounds

Background: The Growing Suburbs Fund will help Yarra Ranges Shire Council to deliver a mountain bike trail network centralised around Warburton, the heart of the Yarra Valley. Stage 1 will deliver 100+ kms of new mountain bike trails and associated infrastructure, that will create a total network of over 150 km of trails and connections when complete. The trail will offer diversity in mountain bike experiences and cater for all ages, disciplines and abilities, including all-terrain wheelchairs.

The project will create a Mountain Bike Hub in Warburton and provide opportunities for revitalisation of Warburton, encouraging new business, attracting visitors and tourism activity.

This project represents a great opportunity to provide quality community infrastructure and provide an opportunity for local families to take part in an active lifestyle, increasing health and wellbeing outcomes.

¹ Victoria in the Future, 2016 <http://profile.id.com.au/yarraranges>

GROWING SUBURBS FUND 2018-19

Expected date of commencement: September 2019

Expected date of completion: July 2022

Total Project Cost: \$6,000,000

Growing Suburbs Fund: \$3,000,000

Other contributions:

- Yarra Ranges Shire Council \$2,700,000
- Warburton and Yarra Junction Community Bank \$300,000

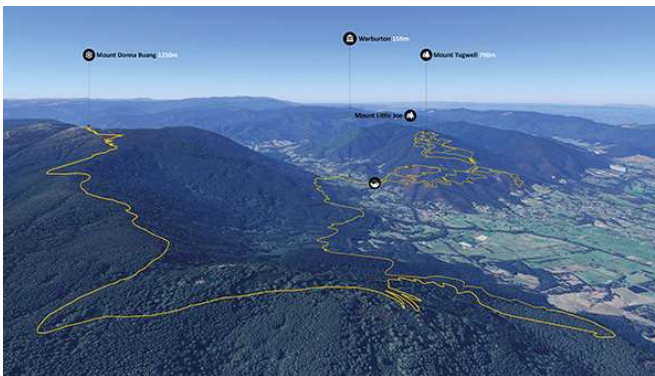


Figure 1 – Trail concept image



Figure 2 – Cyclist on track

Other projects in Yarra Ranges Shire Council to receive funding from the 2018-19 Growing Suburbs Fund are:

- Yarra Valley Trail (GSF \$2,500,000)
- The Ridgewalk (GSF: \$2,000,000)
- Esther Park Synthetic Soccer Pitches (GSF: \$1,250,000)

Yarra Ranges Shire Council received a total of \$8.75 million for four projects under the Growing Suburbs Fund 2018-2019.

Growing Suburbs Fund contributes to a mix of infrastructure projects that have a direct benefit to communities living in the outer suburbs.

You can find out about other Growing Suburbs Fund Projects at localgovernment.vic.gov.au/gsf

For more information regarding these projects contact Local Infrastructure, DELWP.

Email: gsf@delwp.vic.gov.au or phone: 9948 8536

© The State of Victoria Department of Environment, Land, Water and Planning 2020



This work is licensed under a Creative Commons Attribution 4.0 International licence. You are free to re-use the work under that licence, on the condition that you credit the State of Victoria as author. The licence does not apply to any images, photographs or branding, including the Victorian Coat of Arms, the Victorian Government logo and the Department of Environment, Land, Water and Planning (DELWP) logo. To view a copy of this licence, visit <http://creativecommons.org/licenses/by/4.0/>

ISBN 978-1-76077-139-3 (pdf/online)

Disclaimer

This publication may be of assistance to you but the State of Victoria and its employees do not guarantee that the publication is without flaw of any kind or is wholly appropriate for your particular purposes and therefore disclaims all liability for any error, loss or other consequence which may arise from you relying on any information in this publication.

Accessibility

If you would like to receive this publication in an alternative format, please telephone the DELWP Customer Service Centre on 136186, email customer.service@delwp.vic.gov.au, or via the National Relay Service on 133 677 www.relayservice.com.au. This document is also available on the internet at www.delwp.vic.gov.au.