

Growing Suburbs Fund

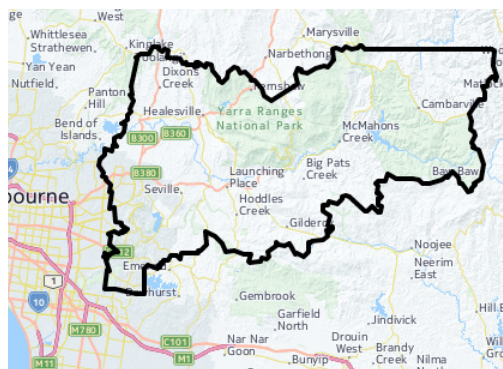
The Growing Suburbs Fund is providing much needed funding to help interface councils deliver new local infrastructure. The \$150 million investment is making a big difference in the day-to-day lives of outer suburban families by meeting critical local infrastructure needs for communities in Melbourne's diverse and fast-growing outer suburbs.



Upwey Tecoma Community Recreational and Sporting Hub

21 – 41 Alexandra Ave, Upwey VIC 3158

YARRA RANGES SHIRE COUNCIL



YARRA RANGES SHIRE COUNCIL

Yarra Ranges is located in Melbourne's outer east approximately 30 km from Melbourne's central business district and covers an area of 2,470 km². It is one of the most diverse municipalities in the state with over 55 suburbs, townships, small communities and rural areas. Approximately 70% of the shire's population live in the urban areas located in the west of the municipality which accounts for approximately 3% of its landmass.

Victoria in the Future, 2014 <http://profile.id.com.au/yarra-ranges>

Read about other Growing Suburbs Fund Projects on www.delwp.vic.gov.au/local-government/council-funding/growing-suburbs-fund

For more information regarding this project contact Local Infrastructure, DELWP.

Email: gsf@delwp.vic.gov.au and
Ph: 9948 8551

PROJECT DESCRIPTION

Funding from the Growing Suburbs Fund will help deliver the Upwey Tecoma Community Recreational and Sporting Hub (UTCRAH).

This project is being delivered by the Shire of Yarra Ranges, in partnership with:

- The Victorian Government
- The Commonwealth Government
- UTCRAH Inc; and
- The Dandenong Ranges Community Bank

The Hub will accommodate the varied needs of member groups by providing a modern and well-designed facility which is suitable for a range of local activities for people of all ages. The space will include:

- Home, visitor and umpire co-gendered change rooms
- First aid and medical rooms
- Gymnasium
- Canteen and Commercial kitchen
- Multi-purpose community activities space
- Office and meeting room spaces; and
- Covered spectator viewing areas.

Expected completion: Mid 2018

Growing Suburbs Fund: \$1,000,000

Other Contributions: \$2,600,000

Other projects in Yarra Ranges Shire to receive funding from the 2016/17 Growing Suburbs Fund are:

- Belgrave South Community Sports Pavilion (\$500,000)
- Changing Places – Yarra Glen (\$125,000)
- Kilsyth Centre of Excellence – Eastern Ranges Regional Facilities Upgrade (\$900,000)