

Growing Suburbs Fund

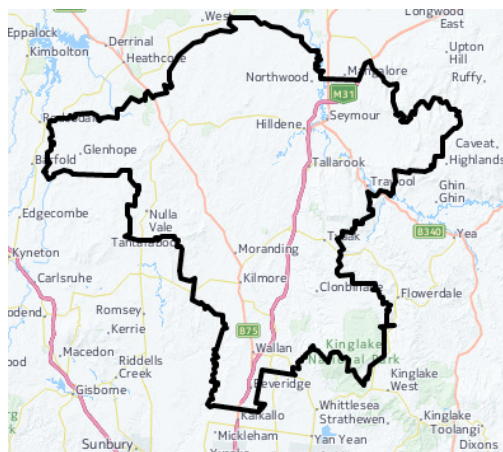
The Growing Suburbs Fund (formerly the Interface Growth Fund) is providing much needed funding to assist interface councils in the task of delivering of new local infrastructure. The initial \$50 million investment in 2015-16 will make a big difference in the day-to-day lives of outer suburban families by meeting critical local infrastructure needs for communities in Melbourne's diverse and fast-growing outer suburbs.



Wallan Integrated Community Centre

Cnr Queen and Stanley Streets, Wallan

MITCHELL SHIRE COUNCIL



PROJECT DESCRIPTION

Wallan, located in Melbourne's outer north, was included in the Metropolitan Melbourne Urban Growth Boundary in 2012. This growing country town is expected to grow even more.

With only two Council operated kindergartens in Wallan, new development and facilities are required to ensure it can accommodate the growing number of children coming into the community.

The Growing Suburbs Fund will contribute to the construction of a new, integrated community learning centre located at Wallan Primary School.

The Wallan Integrated Community Learning Centre will include two early childhood rooms, consulting rooms, a multipurpose room, an outdoor play space and car parking.

It will also house maternal and child health services vital to ensuring that children get the best possible start in life.

The centre's location on the primary school site will provide integrated services to support the Wallan community well into the future.



Expected completion: early 2017

Growing Suburbs Fund: \$1.7 million

Other contributions: \$2 million

MITCHELL SHIRE COUNCIL

Mitchell Shire is located approximately 80 kms north of Melbourne, abutting the northern borders of Hume City Council. It is characterised by a significant growth corridor in the southern area of the shire and rural areas to the north.

The local economy is primarily agriculture and food manufacturing. It covers an area of 2,862 sq kms with a population of approximately 41,000 which is expected to grow to almost 89,000 by 2031¹.

¹ Victoria in the Future, 2014 <http://profile.id.com.au/mitchell>

Read about other Growing Suburbs Fund Projects on www.delwp.vic.gov.au/local-government/council-funding/growing-suburbs-fund
For more information regarding this project contact Local Infrastructure, DELWP.
Email: g sf@delwp.vic.gov.au and Ph: 9948 8551