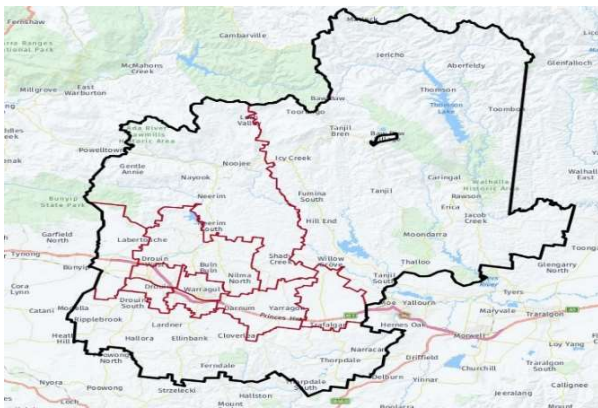


# Growing Suburbs Fund 2022-23

The Growing Suburbs Fund (GSF) is a \$425M contribution to support the delivery of high priority community infrastructure projects for Victoria's diverse and fast-growing outer suburbs. Designed to support the existing and future local infrastructure needs of Melbourne's interface and peri-urban communities, the GSF brings forward local infrastructure projects that are essential to the liveability of outer suburban families.

## Baw Baw Shire Council



Baw Baw Shire is located in the West Gippsland region of Victoria, about 100 kilometres east of the Melbourne CBD. Baw Baw Shire is bounded by the Yarra Ranges Shire and Mansfield Shire in the north, Wellington Shire and Latrobe City in the east, South Gippsland Shire in the south, and Cardinia Shire in the west.

Known as one of Victoria's peri-urban councils, the area recorded a growth rate of 2.8% in 2019-2020.<sup>1</sup> The current population of 54,884 is expected to grow to 75,819 or 38.1% by 2036.<sup>2</sup>

Victoria's population growth slowed during the pandemic period with the impact over this time mainly felt in the inner and middle suburbs of Melbourne; regional areas were less affected due to increased migration from Melbourne. Based on the latest available data, areas across Victoria are now expected to return to normal rates and patterns.

## Rollo Street Yarragon – Community Open Space Reserve

3-5 Rollo Street, Yarragon 3818

The Growing Suburbs Fund will assist Baw Baw Shire Council to deliver an accessible and fully inclusive community open space reserve at the former school site on Rollo Street Yarragon, to provide opportunities for passive recreation and community events.

### The scope of the project includes:

- Open spaces
- Shared loop path
- Shelter
- Park furniture
- Interactive play area
- Information signage
- Artwork
- Raised garden beds
- Established trees

**Expected date of commencement:** February 2024

**Expected date of completion:** February 2025

**Total Project Cost:** \$2,028,132

**Growing Suburbs Fund:** \$1,528,132

### Other contributions:

- Bass Coast Shire Council: \$500,000

**The other project in Baw Baw Shire Council to receive funding from the 2022-23 Growing Suburbs Fund is:**

- Queen Street Warragul Streetscape Project (\$673,962)

<sup>1</sup> ABS Regional Population Growth, March 2022

<sup>2</sup> Victoria in Future, 2019



- LEGEND**
- Site Boundary
  - Existing Tree
  - Proposed Tree
  - Existing Tree (proposed for removal)
  - Maintenance Access
  - Proposed Garden Bed
  - Grass
  - Concrete Path
  - Paved Area
  - New Fence
  - Sign
  - Sculpture/Art
  - Small Interactive Play Feature
  - Path Lighting
  - Bicycle Parking

- Key opportunities for the site include:**
- 1 Opportunity to create a new entry forecourt with paving, wayfinding and information signage, art/sculpture, raised garden beds, arbour, seats and drinking fountain
  - 2 New shelter with picnic tables with inclusion of screening at one end. Art feature to be incorporated in screening. Potential for public toilet to be located at southern end, subject to completion of a public toilet strategy by Council.
  - 3 Retain existing Eucalypt tree (remedial pruning as per arborist's assessment), incorporate planting under dripline with seating outside the edge of dripline.
  - 4 Opportunity for new angled parking in Hanns Lane with 1.5m wide footpath next to park edge
  - 5 Unnamed laneway along the southern boundary to be retained as is (unconstructed)
  - 6 Large open lawn area, suitable for community markets/activities/events/picnics/play. Remove Blackwoods in centre of lawn area
  - 7 Opportunity for small interactive play features to be incorporated throughout park
  - 8 Opportunity for historical information and historical feature to be located on site
  - 9 New 2.5m wide shared loop path connecting between Murray Street and Rollo Street
  - 10 New seating
- Note: Detailed design should include locations for rubbish and recycling bins, a drinking fountain, bollards at entry points, electricity power source, access gates and/or removable bollards for maintenance vehicles, in-wall/up-lighting at entry forecourt and up-lighting of up to four feature trees.

Figure 1 3-5 Rollo Street Master Plan

You can find out about other Growing Suburbs Fund projects at <https://www.localgovernment.vic.gov.au/grants/growing-suburbs-fund>.

For more information about the Growing Suburbs Fund, please contact [gsgf@ecodev.vic.gov.au](mailto:gsgf@ecodev.vic.gov.au).

Authorised by The Hon. Melissa Horne MP, Minister for Local Government

Department of Government Services  
 © Copyright State of Victoria,  
 Department of Government Services 2023

Except for any logos, emblems, trademarks, artwork, and photography this document is made available under the terms of the Creative Commons Attribution 3.0 Australia license.

This document is also available in an accessible format at [dgs.vic.gov.au](http://dgs.vic.gov.au).