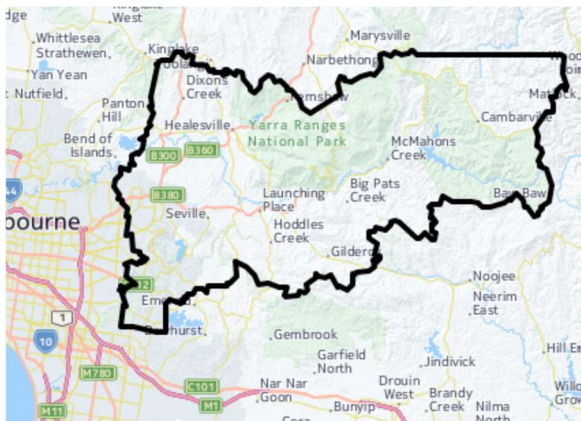


The Growing Suburbs Fund is a contribution towards meeting critical local infrastructure needs for communities in Melbourne's diverse and fast-growing outer suburbs. It is positioned to quickly respond to the pressures being experienced by interface communities by bringing forward local infrastructure projects that will make a big difference in the day-to-day lives of outer suburban families.



Yarra Ranges Shire Council is located in Melbourne's outer east between 30 and 110 km from the Central Business District. It covers an area of 2,470 km¹¹. Around 70 per cent of the Council's population live in the urban areas, which represent approximately three per cent of its landmass to the west of the municipality. The remaining population is distributed throughout rural areas. The municipality is home to significant natural reserves and boasts popular tourist areas such as the Dandenong Ranges and the Upper Yarra Valley.

Yarra Ranges is part of the interface council area and recorded a growth rate of 1.1 per cent in 2017. The population is forecasted to grow from 157,000 in 2017 to about 170,000, or 8 per cent, by 2031.

The Ridgewalk

Dandenong Ranges and surrounds

Background: The Growing Suburbs Fund will help Yarra Ranges Shire Council to deliver a 26 km cultural heritage walking and cycling trail and associated infrastructure in the Dandenong Ranges. This cultural experience will connect townships and establish new spaces for education, cultural expression and social gathering. It will provide art and landscaping reflective of the Dandenong Ranges along the trail through architectural nodes, artworks, heritage interpretation and signage.

The 26km trail will connect townships through the hills, and lead people through natural sites with heritage interpretation, art and sculpture. New spaces will be established for education, cultural expression and social gathering.

The route will include connections and upgrades to existing tracks, as well as the development of new ones. The current draft route has multiple entry points, and connects Upper Ferntree Gully, Upwey and Belgrave to Montrose, Mt Evelyn, through Ferny Creek and Sassafra, Olinda, Mount Dandenong, Kalorama, Kallista and Sherbrooke.

¹ Victoria in the Future, 2017 <http://profile.id.com.au/yarraranges>

GROWING SUBURBS FUND 2018-19

Expected date of commencement: August 2019

Expected date of completion: December 2021

Total Project Cost: \$9,800,000

Growing Suburbs Fund: \$2,000,000

Other contributions:

- Yarra Ranges Shire Council \$2,800,000
- Australian Government through the Department of Infrastructure and Regional Development \$2,500,000
- Building Better Regions Fund (TBC) \$2,500,000.

Other projects in Yarra Ranges Shire Council to receive funding from the 2018/19 Growing Suburbs Fund are:

- Yarra Valley Trail (GSF \$2,500,000)
- Warburton Mountain Destination (GSF: \$3,000,000)
- Esther Park Synthetic Soccer Pitches (GSF: \$1,250,000)

Yarra Ranges Shire Council received a total of \$8.75 million for four projects under the Growing Suburbs Fund 2018 – 2019.



Figure 1 – Kalorama Lookout



Figure 2 - Rui Chafes, The World Becomes Silent, 2004

Growing Suburbs Fund contributes to a mix of infrastructure projects that have a direct benefit to communities living in the outer suburbs.

You can find out about other Growing Suburbs Fund Projects at localgovernment.vic.gov.au/gsf

For more information regarding these projects contact Local Infrastructure, DELWP.

Email: gsf@delwp.vic.gov.au or phone: 9948 8536

© The State of Victoria Department of Environment, Land, Water and Planning 2020



This work is licensed under a Creative Commons Attribution 4.0 International licence. You are free to re-use the work under that licence, on the condition that you credit the State of Victoria as author. The licence does not apply to any images, photographs or branding, including the Victorian Coat of Arms, the Victorian Government logo and the Department of Environment, Land, Water and Planning (DELWP) logo. To view a copy of this licence, visit <http://creativecommons.org/licenses/by/4.0/>

ISBN 978-1-76077-140-9 (pdf/online)

Disclaimer

This publication may be of assistance to you but the State of Victoria and its employees do not guarantee that the publication is without flaw of any kind or is wholly appropriate for your particular purposes and therefore disclaims all liability for any error, loss or other consequence which may arise from you relying on any information in this publication.

Accessibility

If you would like to receive this publication in an alternative format, please telephone the DELWP Customer Service Centre on 136186, email customer.service@delwp.vic.gov.au, or via the National Relay Service on 133 677 www.relayservice.com.au. This document is also available on the internet at www.delwp.vic.gov.au.