

Growing Suburbs Fund

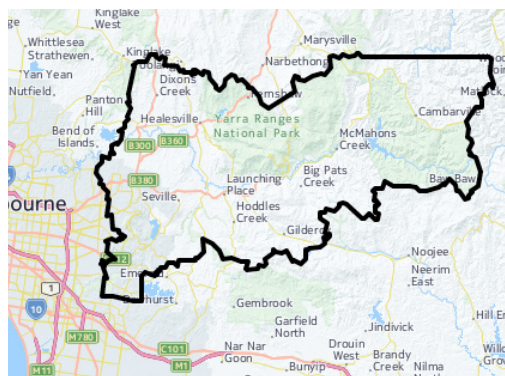
The Growing Suburbs Fund (formerly the Interface Growth Fund) is providing much needed funding to assist interface councils in the task of delivering of new local infrastructure. The initial \$50 million investment in 2015-16 will make a big difference in the day-to-day lives of outer suburban families by meeting critical local infrastructure needs for communities in Melbourne's diverse and fast-growing outer suburbs.



Lillydale Lake Playground Upgrade

Swansea Road, Lilydale

YARRA RANGES SHIRE COUNCIL



YARRA RANGES SHIRE

Yarra Ranges is located in Melbourne's outer east approximately 30 kms from Melbourne's central business district and covers an area of 2,470 km². It is one of the most diverse municipalities in the state with over 55 suburbs, townships, small communities and rural areas. Approximately 70% of the shire's population live in the urban areas located in the west of the municipality which accounts for approximately 3% of its landmass.

1 Victoria in the Future, 2014 <http://profile.id.com.au/yarraranges>

PROJECT DESCRIPTION

Lillydale is an established and diverse suburb at the foot of the Dandenong Ranges.

The Lillydale Lake Playground is a large play space which will be upgraded to increase play options for all abilities. The park will offer nature play, water and sand play, junior play, older children's play, informal ball play areas, adult fitness equipment and picnic facilities.

With funding from the Growing Suburbs Fund, play space improvements will create a unique area for children of all ages and abilities, and their families, while blending in with the surrounding parkland.

Expected completion: early 2017

Growing Suburbs Fund: \$1 million

Other Contributions: \$400,000



Read about other Growing Suburbs Fund Projects on www.delwp.vic.gov.au/local-government/council-funding/growing-suburbs-fund
For more information regarding this project contact Local Infrastructure, DELWP.
Email: g sf@delwp.vic.gov.au and Ph: 9948 8551