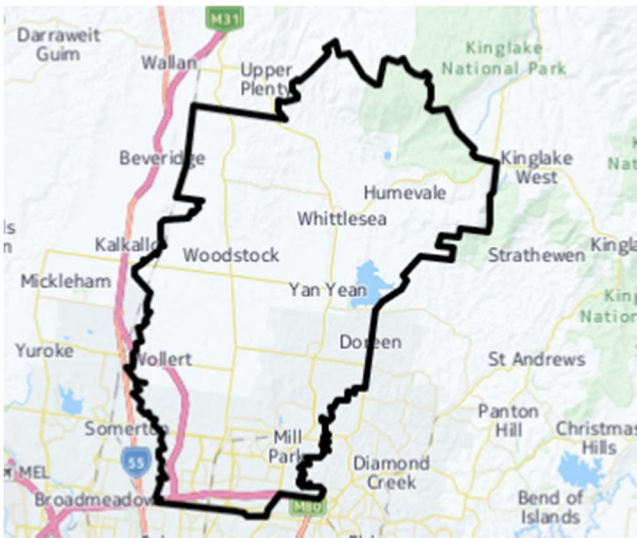


Growing Suburbs Fund 2022-23

The Growing Suburbs Fund (GSF) is a \$425M contribution to support the delivery of high priority community infrastructure projects for Victoria's diverse and fast-growing outer suburbs. Designed to support the existing and future local infrastructure needs of Melbourne's interface and peri-urban communities, the GSF brings forward local infrastructure projects that are essential to the liveability of outer suburban families.

City of Whittlesea



City of Whittlesea is located about 20 km north of the Melbourne Central Business District. The southern parts of the city are established urban areas and current residential developments are extending towards the north of the municipality. City of Whittlesea is home to an ethnically diverse community, with more than half of the residents from non-English speaking backgrounds.

City of Whittlesea Council is part of the interface council area and recorded a growth rate of 2.7% in 2019-20. ¹ The population is projected to grow from 236,539 in 2020 to about 364,453 or 54.1% per cent by 2036.2

Victoria's population growth slowed during the pandemic period with the impact over this time mainly felt in the inner and middle suburbs of Melbourne; regional areas were less affected due to increased migration from Melbourne. Based on the latest available data, areas across Victoria are now expected to return to normal rates and patterns.

Epping Community Services Hub Refurbishment

713 High Street, Epping 3076

The Growing Suburbs Fund will assist the City of Whittlesea to refurbish the Epping Community Services Hub with additional consulting spaces and works to ensure DDA compliance and improved functionality throughout.

The scope of the project will include:

- Construction of three additional consulting/breakout rooms
- Construction of two additional breakout spaces for private appointments
- Refurbishment of the office space to create ten new workstations
- Upgraded heating and cooling, and ventilation systems

Expected date of commencement: December 2023

Expected date of completion: June 2024

Total Project Cost: \$750,000

Growing Suburbs Fund: \$375,000

Other contributions:

- City of Whittlesea: \$375,000

The other projects in the City of Whittlesea to receive funding from the 2022-23 Growing Suburbs Fund are:

- Whittlesea Township Park – Connecting Community Through Improved Access (\$500,000)
- Mill Park Reserve Connecting Shared Trails (\$475,000)
- Riverside Community Activity Centre and Reserve Upgrades (\$500,000)
- Community Energy Transition Program (\$250,000)

¹ ABS Regional Population Growth, March 2022

² Victoria in Future, 2019

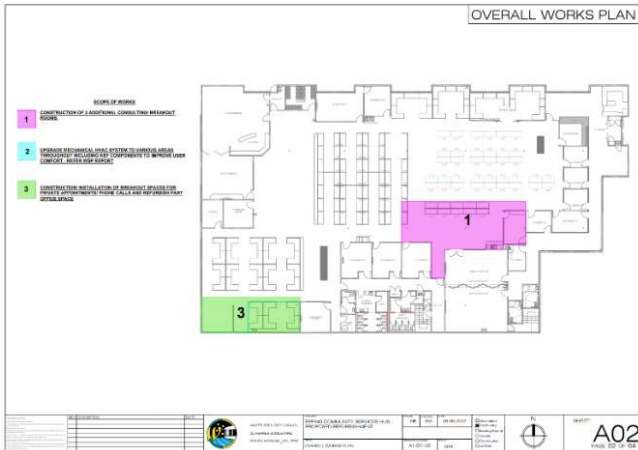


Figure 1- Additional Consulting/ Breakout Rooms

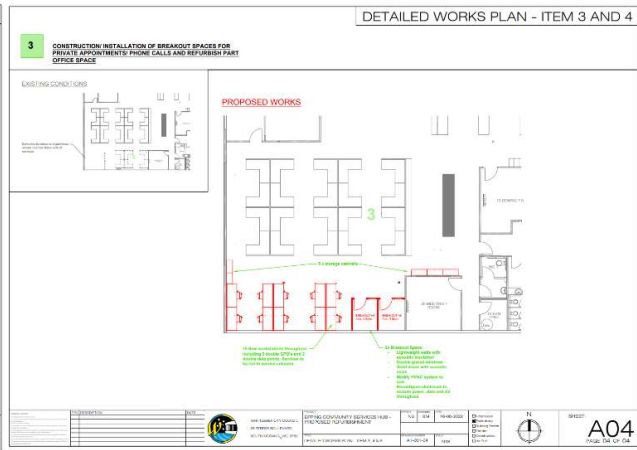


Figure 2- Additional Workstations

You can find out about other Growing Suburbs Fund projects at <https://www.localgovernment.vic.gov.au/grants/growing-suburbs-fund>.

For more information about the Growing Suburbs Fund, please contact gsf@ecodev.vic.gov.au.

Authorised by The Hon. Melissa Horne MP, Minister for Local Government

Department of Jobs, Precincts and Regions
 © Copyright State of Victoria,
 Department of Government Services 2023

Except for any logos, emblems, trademarks, artwork, and photography this document is made available under the terms of the Creative Commons Attribution 3.0 Australia license.

This document is also available in an accessible format at dgs.vic.gov.au