

# Growing Suburbs Fund

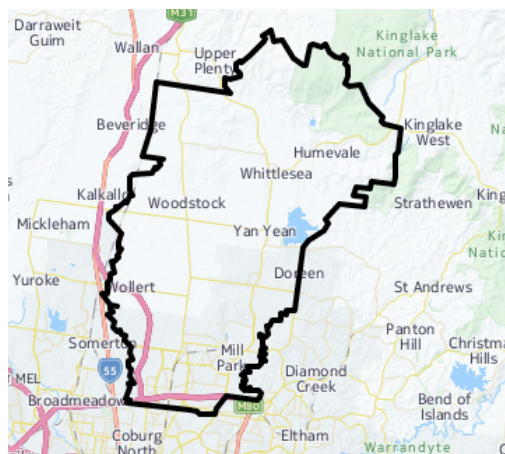
The Growing Suburbs Fund (formerly the Interface Growth Fund) is providing much needed funding to assist interface councils in the task of delivering of new local infrastructure. The initial \$50 million investment in 2015-16 will make a big difference in the day-to-day lives of outer suburban families by meeting critical local infrastructure needs for communities in Melbourne's diverse and fast-growing outer suburbs.



## Lalor Tennis Community Pavilion Development Project

Sydney Crescent, Lalor

WHITTLESEA CITY COUNCIL



### CITY OF WHITTLESEA

The City of Whittlesea is located approximately 20 kms north of Melbourne's central business district. The southern parts of the city are well established urban areas while the north remains rural. Whittlesea is home to an ethnically diverse population with a very high percentage of residents born overseas.

Residential developments are extending towards the north of the municipality and the City of Whittlesea is expected to grow from more than 206,000 residents to more than 320,000 residents by 2031.<sup>1</sup>

<sup>1</sup> Victoria in the Future, 2014 <http://profile.id.com.au/whittlesea>

### PROJECT DESCRIPTION

Lalor is an established suburb in Melbourne's north. Residents come from a diverse range of cultural backgrounds.

The Lalor tennis club is a popular place for local residents to play social and competition tennis, and offers programs for local indigenous youth.

The Growing Suburbs Fund will contribute to a new Community Pavilion to be built at the club as well as an outdoor social gathering space for use by club members and local residents.

This is part of larger Council project to upgrade the tennis courts and car parking. Courts 1 and 2 were redeveloped as part of the Lalor tennis development project. In future stages, multipurpose courts will allow residents to add netball to their range of sporting options available at the Club.

**Expected completion: early 2017**

**Growing Suburbs Fund: \$1.25 million**

**Other contributions: \$1.77 million**

Read about other Growing Suburbs Fund Projects on [www.delwp.vic.gov.au/local-government/council-funding/growing-suburbs-fund](http://www.delwp.vic.gov.au/local-government/council-funding/growing-suburbs-fund)  
For more information regarding this project contact Local Infrastructure, DELWP.  
Email: [gsf@delwp.vic.gov.au](mailto:gsf@delwp.vic.gov.au) and Ph: 9948 8551