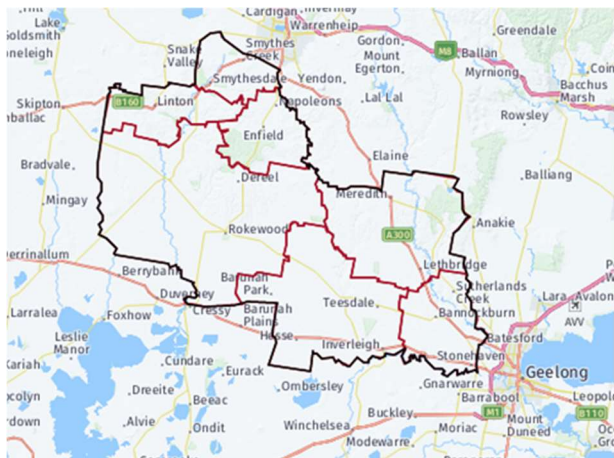


Growing Suburbs Fund 2022-23

The Growing Suburb Fund (GSF) is a \$425M contribution to support the delivery of high priority community infrastructure projects for Victoria’s diverse and fast-growing outer suburbs. Designed to support the existing and future local infrastructure needs of Melbourne’s interface and peri-urban communities, the GSF brings forward local infrastructure projects that are essential to the liveability of outer suburban families.

Golden Plains Shire Council



Golden Plains Shire is located in south-western Victoria, approximately 160 kilometres from the Melbourne CBD, 80 kilometres from the Geelong CBD, and 50 kilometres from the Ballarat CBD.

Known as one of Victoria’s peri-urban councils, the area recorded a growth rate of 2.2% in 2019-20¹. The current population of 23,249 is expected to grow to 33,073 or 36.4% by 2036².

Victoria’s population growth slowed during the pandemic period with the impact over this time mainly felt in the inner and middle suburbs of Melbourne; regional areas were less affected due to increased migration from Melbourne. Based on the latest available data, areas across Victoria are now expected to return to normal rates and patterns.

Inverleigh Active Youth Space

1 East St, Inverleigh 3321

The Growing Suburbs Fund will assist Golden Plains Shire Council to deliver the Inverleigh Active Youth Space which will provide both local residents, user groups, and the wider community with the opportunity for physical activity, outdoor play and increased participation in active recreation.

The scope of the project includes creating:

- Skate Park with a sealed concrete surface
- Asphalt BMX pump track
- Half-court basketball court
- Improved landscaping and connecting path
- Energy efficient LED lighting
- Concrete seating
- Resurfaced car parks
- Drinking fountain and rubbish/recycling bins
- Shelter and shade infrastructure
- Landscaping, signage, and wayfinding

Expected date of commencement: October 2023

Expected date of completion: September 2024

Total Project Cost: \$2,337,587

Growing Suburbs Fund: \$1,487,587

Other contributions:

- Golden Plains Shire Council \$150,000
- Commonwealth Government \$750,000

The other projects in Golden Plains Shire Council to receive funding from the 2022-23 Growing Suburbs Fund are:

- Bannockburn Skate Park upgrade (\$805,000)

¹ ABS Regional Population Growth, March 2022

² Victoria in Future, 2019



Figure 1 – Draft Concept Plan

You can find out about other Growing Suburbs Fund projects at <https://www.localgovernment.vic.gov.au/grants/growing-suburbs-fund>.

For more information about the Growing Suburbs Fund, please contact gsf@ecodev.vic.gov.au.

Authorised by The Hon. Melissa Horne MP, Minister for Local Government

Department of Government Services
© Copyright State of Victoria,
Department of Government Services 2023

Except for any logos, emblems, trademarks, artwork and photography this document is made available under the terms of the Creative Commons Attribution 3.0 Australia license.

This document is also available in an accessible format at dgs.vic.gov.au