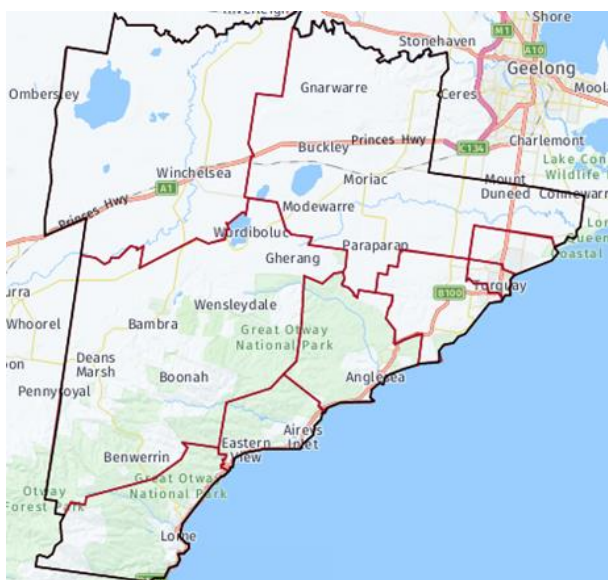


# Growing Suburbs Fund 2020-21 Round 2

The Growing Suburbs Fund is a contribution towards meeting critical local infrastructure needs for communities in Melbourne's diverse and fast-growing outer suburbs. It is positioned to quickly respond to the pressures being experienced by interface and peri-urban communities by bringing forward local infrastructure projects that will make a big difference in the day-to-day lives of outer suburban families.

## Surf Coast Shire Council



Surf Coast Shire is located in south-western Victoria, between 75 and 125 kilometres from the Melbourne CBD, and between 10 and 60 kms south-west of the Geelong CBD. It covers an area of 1,560 kms has traditionally been a place for holiday makers, with its spectacular coastline, scenic rainforests and beaches.

The Surf Coast Shire is among the fastest growing regional municipalities in Victoria averaging around 3.06% each year. Known as one of Victoria's peri-urban councils, the current population of 33,456 is expected to grow to 45,438 by 2036.<sup>1</sup>

## SURF COAST COMMUNITY WELLBEING SPACES PROJECT

1 Merrijig Drive, Torquay 3228

The Growing Suburbs Fund will assist Bass Coast Shire Council to establish essential wellbeing services meeting a critical infrastructure provision gap by delivering allied health suites, office suites/meeting rooms for community/not-for-profit organisations, program spaces for community multiuse, supporting infrastructure to ensure effective operation of these spaces and integration with the multi-purpose Wurdi Baierr Stadium.

The project will provide critical facilities for Surf Coast's growing community. It will create a unique offering of multiuse spaces in the civic and recreation precinct. People will access healthcare, connect, rehabilitate, exercise, work and meet in one location, in the heart of a growth area and close to schools and public transport

**Expected date of commencement:** October 2022

**Expected date of completion:** October 2024

**Total Project Cost:** \$9,250,000

**Growing Suburbs Fund:** \$3,500,000

**Other contributions:**

- Surf Coast Shire Council: \$5,750,000

<sup>1</sup> Victoria in Future, 2019



Figure 1: Concept design



Figure 2: Concept design - Aerial view

You can find out about other Growing Suburbs Fund projects at <https://www.localgovernment.vic.gov.au/grants/growing-suburbs-fund>

For more information regarding these projects contact the GSF team at [gsf@ecodev.vic.gov.au](mailto:gsf@ecodev.vic.gov.au)

Authorised by the Hon Shaun Leane MP, Minister for Local Government and Suburban Development  
Department of Jobs, Precincts and Regions  
1 Spring Street Melbourne Victoria 3000  
Telephone (03) 9651 9999

© Copyright State of Victoria,  
Department of Jobs, Precincts and Regions 2019  
Except for any logos, emblems, trademarks, artwork and photography this document is made available under the terms of the Creative Commons Attribution 3.0 Australia license.

This document is also available in an accessible format at [djpr.vic.gov.au](http://djpr.vic.gov.au)