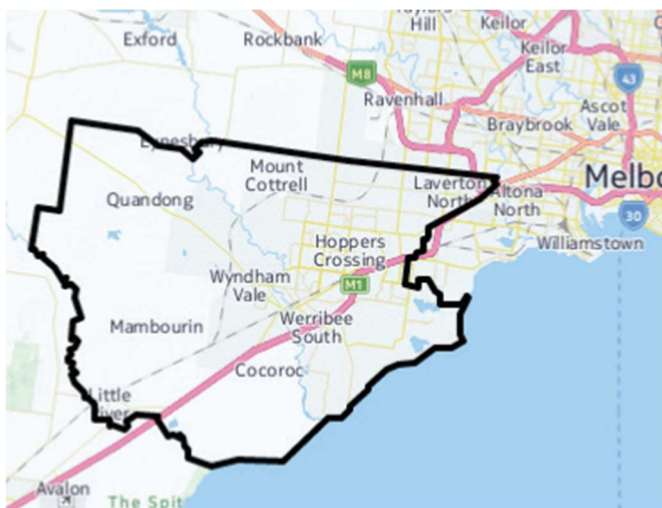


The Growing Suburbs Fund is a contribution towards meeting critical local infrastructure needs for communities in Melbourne's diverse and fast-growing outer suburbs. It is positioned to quickly respond to the pressures being experienced by interface communities by bringing forward local infrastructure projects that will make a big difference in the day-to-day lives of outer suburban families.



GRANGE COMMUNITY CENTRE & RESERVE ENHANCEMENT

260-280 Hogans Road, Hoppers Crossing 3029

Background: The Grange Community Centre & Reserve enhancement is a \$2 million partnership project between Victorian Government's Growing Suburbs Fund and the developers. The 2018-19 Growing Suburbs Fund will contribute \$1 million towards the redevelopment of the Centre, which is currently operating at capacity. The developers through the Wyndham City Council will also provide \$1.7 million toward the project.

The Growing Suburbs Fund will help Wyndham City Council improve the existing community centre to meet the increasing need for more community space as a result of the growth in Tarneit West. Upgrading of the existing facility will help to reinforce integrated service delivery, improve all abilities access and increase the sustainability and operational efficiency of the building.

The project will deliver a new community meeting space that will allow for a range of community programs and services, a refurbished reception and office area and a welcoming and safe 'community lounge space' and landscaped courtyard which will allow community members to have access to free public WIFI and a tea/coffee making point without needing to attend specific program or service.

Wyndham City Council is located on the western edge of Melbourne with Werribee at its commercial heart. It was one of the fastest growing interface councils in 2017 in Melbourne, with a population growth rate of 6.1 per cent¹ compared with the national growth average of 1.6 per cent. The population is expected to rise by 50 per cent, in excess of 360,000, by 2031².

Wyndham City Council features major tourism attractions including the Werribee Park and Mansion, Werribee Open Range Zoo, State Rose Garden and RAAF Museum. The council area has a residential and rural zone, with substantial industrial, technological and commercial areas. Rural land is used mainly for commercial vegetable growing and grazing.

¹ Australian Bureau of Statistics 2017

² Victoria in the Future, 2016 <http://profile.id.com.au/wyndham>

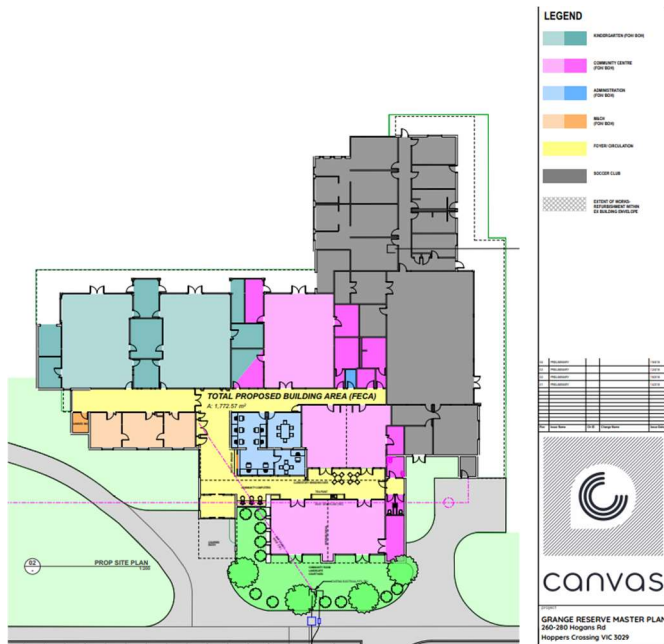


Figure 1 – Grange Reserve Master Plan

Other projects in Wyndham City Council to receive funding from the 2018/19 Growing Suburbs Fund are:

- Central Park Redevelopment, Hoppers Crossing (\$425,000)
- Upgrade of Friar Place Park, Point Cook (\$200,000)
- Upgrade of Golden Square Reserve (\$325,000)
- Wyndham Street Surfer Bus (\$1,000,000)
- Former Glen Devon School Site Reactivation (\$870,000)

Wyndham City Council will receive a total of \$3,820,000 for six projects under the Growing Suburbs Fund 2018-19 Round.

Growing Suburbs Fund contributes to a mix of infrastructure projects that have a direct benefit to communities living in the outer suburbs.

Expected date of commencement: June 2019

Expected date of completion: July 2021

Total Project Cost: \$2,700,000

Growing Suburbs Fund: \$1,000,000

Other contributions:

- Developer contribution - \$2,700,000

You can find out about other Growing Suburbs Fund Projects at localgovernment.vic.gov.au/gsf

For more information regarding these projects contact Local Infrastructure, DELWP.

Email: gsf@delwp.vic.gov.au or phone: 9948 8536



Disclaimer

This publication may be of assistance to you but the State of Victoria and its employees do not guarantee that the publication is without flaw of any kind or is wholly appropriate for your particular purposes and therefore disclaims all liability for any error, loss or other consequence which may arise from you relying on any information in this publication.

Accessibility

If you would like to receive this publication in an alternative format, please telephone the DELWP Customer Service Centre on 136186, email customer.service@delwp.vic.gov.au or via the National Relay Service on 133 677 www.relayservice.com.au. This document is also available on the internet at www.delwp.vic.gov.au.