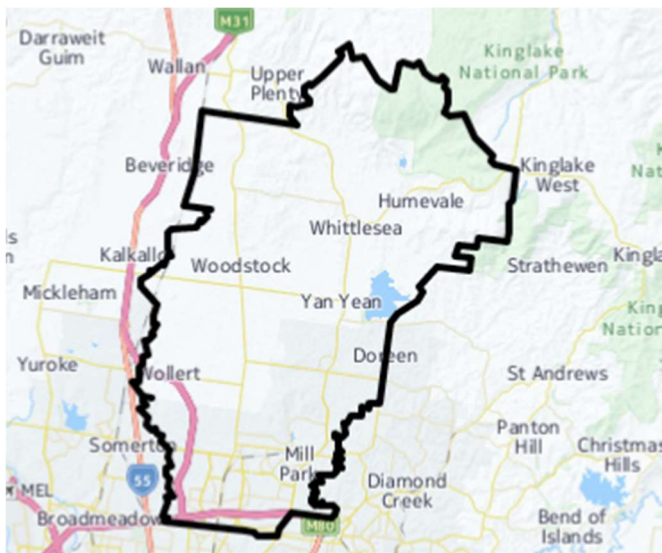


The Growing Suburbs Fund is a contribution towards meeting critical local infrastructure needs for communities in Melbourne's diverse and fast-growing outer suburbs. It is positioned to quickly respond to the pressures being experienced by interface communities by bringing forward local infrastructure projects that will make a big difference in the day-to-day lives of outer suburban families.



The City of Whittlesea is located about 20 km north of the Melbourne Central Business District. The southern parts of the city are established urban areas and current residential developments are extending towards the north of the municipality.

The City of Whittlesea is home to an ethnically-diverse community, with more than half of the residents from non-English speaking backgrounds. In 2017, the City of Whittlesea had an annual population growth rate of 4.1 per cent compared with the national average of 1.6 per cent. The current population is expected to grow from around 216,500 in 2017, by 45 per cent to about 383,000 in 2031<sup>1</sup>.

### HARVEST HOME ROAD COMMUNITY PAVILION

Cnr Harvest Home and Epping Road, Epping 3076



Figure 1: Concept Design

**Background:** The Growing Suburbs Fund will help the City of Whittlesea deliver the Harvest Home Road Community Pavilion which will see an inclusive and welcoming facility that, through gender equity design features and functionalities, will accommodate club operations and offer meeting/activity space opportunities to the communities of the Epping North Growth Corridor. The community pavilion will consist of the following:

- Multi-purpose community social room with access to canteen/kitchen and terraced all weather veranda;
- Shared entry foyer;
- Six mixed gender/female friendly/multi-purpose change rooms (for 3 pitches) including toilet and shower facilities;

<sup>1</sup> Victoria in the Future, 2016 <http://profile.id.com.au/whittlesea>

# GROWING SUBURBS FUND 2018-19

- Line of site to all three pitches for spectators and safety of users travelling to and from the pavilion during the day and evening times.
- Canteen/kitchen;
- Internally and externally accessed storage areas;
- Committee office/first aid room;
- Six mixed gender referee change rooms for 3 pitches;
- Public toilets, internally and externally accessible;
- Security lighting of paths and surrounding the building;
- External bin enclosure and landscaping.

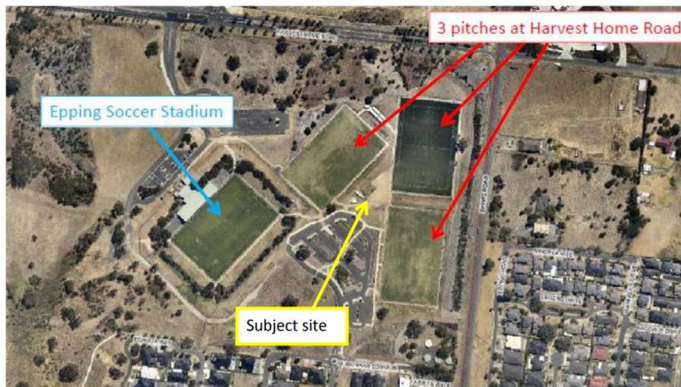


Figure 2: Site Overview

**Expected date of commencement:** October 2018

**Expected date of completion:** late 2019

**Total Project Cost:** \$5,643,820

**Growing Suburbs Fund:** \$2,800,000

**Other contributions:**

- City of Whittlesea contributes \$2,593,820
- Sport and Recreation Victoria (Female Funding Program) \$250,000

**Other projects in the City of Whittlesea to receive funding from the 2018/19 Growing Suburbs Fund are:**

- Urban Streetscape Improvements - High Street Thomastown (\$1,450,000)
- Norris Bank Reserve Redevelopment (\$500,000)
- Whittlesea Swim Centre Refurbishment (\$312,000)

Whittlesea City Council will receive a total of \$5,062,000 for four projects under the Growing Suburbs Fund 2018-19 Round.

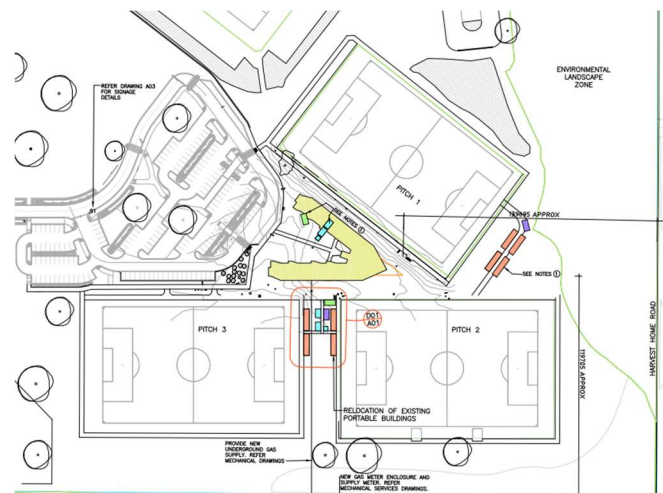


Figure 3: Preliminary design

Growing Suburbs Fund contributes to a mix of infrastructure projects that have a direct benefit to communities living in the outer suburbs.

You can find out about other Growing Suburbs Fund Projects at [localgovernment.vic.gov.au/gsf](http://localgovernment.vic.gov.au/gsf)

For more information regarding these projects contact Local Infrastructure, DELWP.

Email: [gsf@delwp.vic.gov.au](mailto:gsf@delwp.vic.gov.au) or phone: 9948 8536

© The State of Victoria Department of Environment, Land, Water and Planning 2020



This work is licensed under a Creative Commons Attribution 4.0 International licence. You are free to re-use the work under that licence, on the condition that you credit the State of Victoria as author. The licence does not apply to any images, photographs or branding, including the Victorian Coat of Arms, the Victorian Government logo and the Department of Environment, Land, Water and Planning (DELWP) logo. To view a copy of this licence, visit <http://creativecommons.org/licenses/by/4.0/>

ISBN 978-1-76077-035-8 (pdf/online)

Disclaimer

This publication may be of assistance to you but the State of Victoria and its employees do not guarantee that the publication is without flaw of any kind or is wholly appropriate for your particular purposes and therefore disclaims all liability for any error, loss or other consequence which may arise from you relying on any information in this publication.

## Accessibility

If you would like to receive this publication in an alternative format, please telephone the DELWP Customer Service Centre on 136186, email [customer.service@delwp.vic.gov.au](mailto:customer.service@delwp.vic.gov.au), or via the National Relay Service on 133 677 [www.relayservice.com.au](http://www.relayservice.com.au). This document is also available on the internet at [www.delwp.vic.gov.au](http://www.delwp.vic.gov.au).