

Growing Suburbs Fund

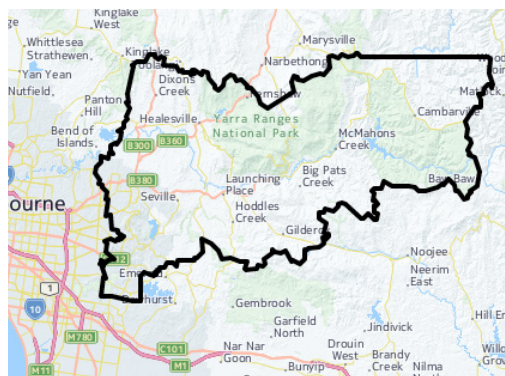
The Growing Suburbs Fund (formerly the Interface Growth Fund) is providing much needed funding to assist interface councils in the task of delivering of new local infrastructure. The initial \$50 million investment in 2015-16 will make a big difference in the day-to-day lives of outer suburban families by meeting critical local infrastructure needs for communities in Melbourne's diverse and fast-growing outer suburbs.



Belgrave Community Hub

1616 – 1622 Burwood Highway, Belgrave

YARRA RANGES SHIRE COUNCIL



PROJECT DESCRIPTION

Belgrave is an important gateway to the broader Dandenong Ranges communities. Accessible health and community services are critical for both Belgrave and its surrounding communities.

The Victorian Government has contributed funding towards a new Belgrave Community Hub in partnership with Yarra Ranges Council, the Australian Government, and Inspiro Community Health Centre. The new hub will include multi-purpose rooms, consulting rooms, office accommodation, kitchen, outdoor play space, car parking and landscape works.

The new Belgrave Community Hub will bring together vital, whole-of-life services to the Yarra Ranges' outer eastern areas, where the demand for aged care services, disability services, youth services and early childhood services is increasing.

Expected Completion: March 2018

Growing Suburbs Fund: \$723,000

Other contributions: \$7,420,000

YARRA RANGES SHIRE

Yarra Ranges is located in Melbourne's outer east approximately 30 kms from Melbourne's central business district and covers an area of 2,470 km². It is one of the most diverse municipalities in the state with over 55 suburbs, townships, small communities and rural areas. Approximately 70% of the shire's population live in the urban areas located in the west of the municipality which accounts for approximately 3% of its landmass.

1 Victoria in the Future, 2014 <http://profile.id.com.au/yarraranges>



Read about other Growing Suburbs Fund Projects on www.delwp.vic.gov.au/local-government/council-funding/growing-suburbs-fund
For more information regarding this project contact Local Infrastructure, DELWP.
Email: g sf@delwp.vic.gov.au and Ph: 9948 8551