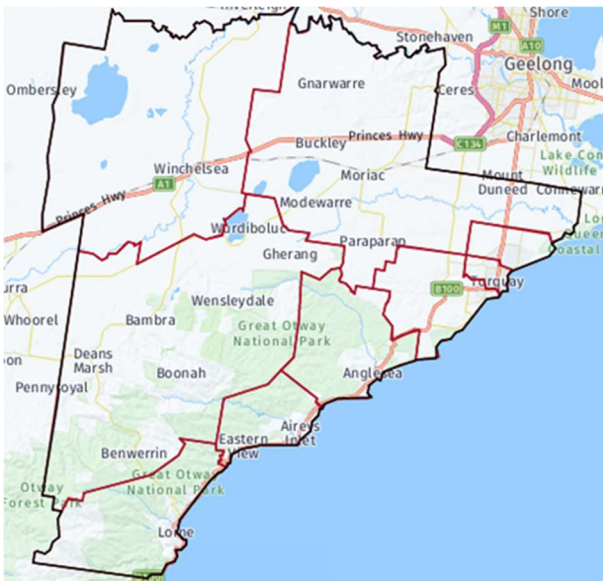


Growing Suburbs Fund 2022-23

The Growing Suburb Fund (GSF) is a \$425M contribution to support the delivery of high priority community infrastructure projects for Victoria's diverse and fast-growing outer suburbs. Designed to support the existing and future local infrastructure needs of Melbourne's interface and peri-urban communities, the GSF brings forward local infrastructure projects that are essential to the liveability of outer suburban families.

Surf Coast Shire Council



Surf Coast Shire is located in south-western Victoria, between 75 and 125 kilometres from the Melbourne CBD, and between 10 and 60 kms south-west of the Geelong CBD. It covers an area of 1,560 kms and has traditionally been a place for holiday makers, with its spectacular coastline, scenic rainforests and beaches.

Known as one of Victoria's peri-urban councils, Surf Coast Shire is among the fastest growing regional municipalities in Victoria averaging around 3.06% each year¹. The current population of 33,456 is expected to grow to 45,438 by 2036².

Victoria's population growth slowed during the pandemic period with the impact over this time mainly felt in the inner and middle suburbs of Melbourne; regional areas were less affected due to increased migration from Melbourne. Based on the latest available data, areas across Victoria are now expected to return to normal rates and patterns

Barwon River Loop Walk (Stage2)

12 Barwon Terrace, Winchelsea 3241

The Growing Suburbs Fund will assist Surf Coast Shire Council to deliver the final stage of the Barwon River Loop Walk, connecting the four quadrants of the Winchelsea township together while activating the much-loved Barwon River precinct. This project will improve access to facilities and services and enhance the visitor experience and economic impact of this key tourist destination.

The scope of the project includes:

- A 2km trail inclusive of 20m x 2.5m pedestrian bridge with kick rails
- Observation platforms approximately 5m x 3m, one on each side of the river
- Minor connection improvements
- Educational and wayfinding signage to support the visitor experience

Expected date of commencement: April 2023

Expected date of completion: September 2023

Total Project Cost: \$660,00

Growing Suburbs Fund: \$330,000

Other contributions:

- Surf Coast Shire Council \$330,000

¹ ABS Regional Population Growth, March 2022

² Victoria in Future, 2019

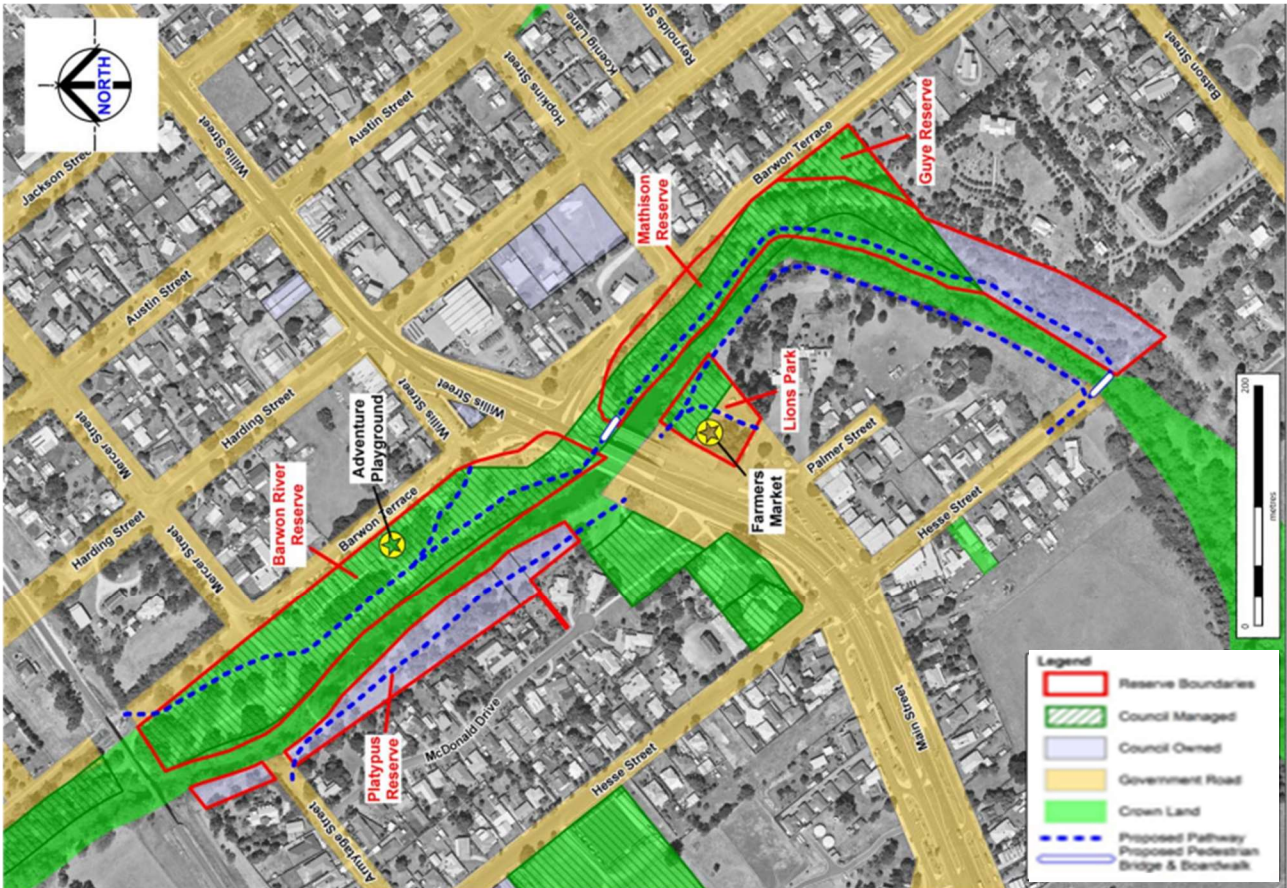


Figure 1 Land Overlay

You can find out about other Growing Suburbs Fund projects at <https://www.localgovernment.vic.gov.au/grants/growing-suburbs-fund>.

For more information about the Growing Suburbs Fund, please contact gsf@ecodev.vic.gov.au.

Authorised by The Hon. Melissa Horne MP, Minister for Local Government

Department of Government Services
 © Copyright State of Victoria,
 Department of Government Services 2023

Except for any logos, emblems, trademarks, artwork, and photography this document is made available under the terms of the Creative Commons Attribution 3.0 Australia license.

This document is also available in an accessible format at dgs.vic.gov.au