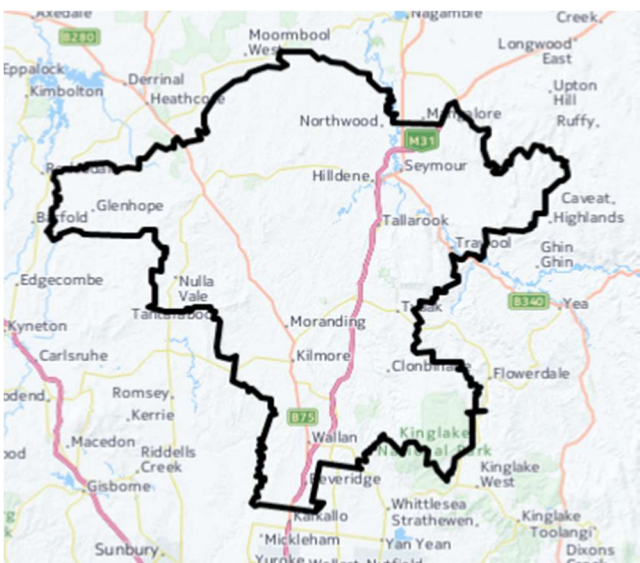


# Growing Suburbs Fund 2022-23

The Growing Suburb Fund (GSF) is a \$425M contribution to support the delivery of high priority community infrastructure projects for Victoria's diverse and fast-growing outer suburbs. Designed to support the existing and future local infrastructure needs of Melbourne's interface and peri-urban communities, the GSF brings forward local infrastructure projects that are essential to the liveability of outer suburban families.

## Mitchell Shire Council



Mitchell Shire Council is located approximately 60 kilometres north of Melbourne Central Business District and is bounded by Hume and Whittlesea councils to the south.

The southern tip has experienced significant residential growth in recent years due to affordable new housing and infrastructure to support an easy commute to Melbourne.

Mitchell Shire Council is part of the interface council area and recorded a growth rate of 3.4% in 2019-20<sup>1</sup>. The population is projected to grow from 47,647 in 2020 to about 97,688 or 105% per cent by 2036<sup>2</sup>.

Victoria's population growth slowed during the pandemic period with the impact over this time mainly felt in the inner and middle suburbs of Melbourne; regional areas were less affected due to increased migration from Melbourne. Based on the latest available data, areas across Victoria are now expected to return to normal rates and patterns.

## Kilmore Senior Citizens Centre Redevelopment

7 Sydney Road, Kilmore 3764

The Growing Suburbs Fund will assist Mitchell Shire Council to rejuvenate an existing community facility into a multi-purpose centre that will promote and support inter-generational and shared use within the Kilmore community.

### The scope of the project includes:

- New DDA compliant amenities
- An expanded kitchen
- New flooring and painting
- 2 multi-purpose offices/storage rooms
- A new entrance and foyer space
- A new compliant entrance ramp and steps
- Installation of kerb to driveway, carparking and paving

**Expected date of commencement:** June 2023

**Expected date of completion:** November 2023

**Total Project Cost:** \$900,000

**Growing Suburbs Fund:** \$830,000

**Other Contributions:**

- Mitchell Shire Council \$70,000

**The other projects in Mitchell Shire Council to receive funding from the 2022-23 Growing Suburbs Fund are:**

- Kings Park Play Space Upgrade (\$200,000)
- Wandong Community Centre redevelopment (\$720,000)

<sup>1</sup> ABS Regional Population Growth, March 2022

<sup>2</sup> Victoria in Future, 2019



Figure 1 – Aerial shot of project site

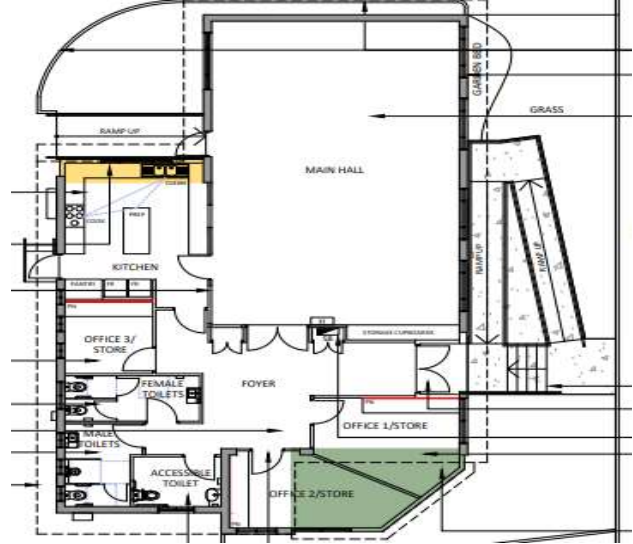


Figure 2 – Concept design floor plan

You can find out about other Growing Suburbs Fund projects at <https://www.localgovernment.vic.gov.au/grants/growing-suburbs-fund>.

For more information about the Growing Suburbs Fund, please contact [gsf@ecodev.vic.gov.au](mailto:gsf@ecodev.vic.gov.au).

Authorised by The Hon. Melissa Horne MP, Minister for Local Government

Department of Government Services  
 © Copyright State of Victoria,  
 Department of Government Services 2023

Except for any logos, emblems, trademarks, artwork, and photography this document is made available under the terms of the Creative Commons Attribution 3.0 Australia license.

This document is also available in an accessible format at [dgs.vic.gov.au](https://dgs.vic.gov.au)