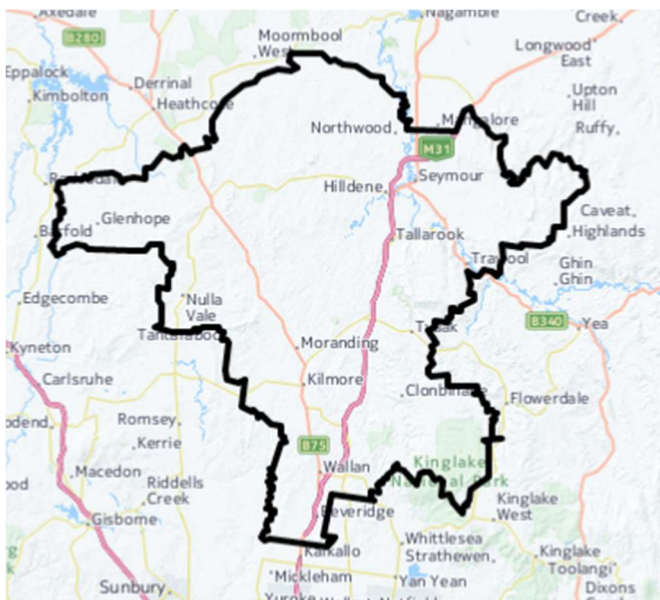


The Growing Suburbs Fund is a contribution towards meeting critical local infrastructure needs for communities in Melbourne's diverse and fast-growing outer suburbs. It is positioned to quickly respond to the pressures being experienced by interface communities by bringing forward local infrastructure projects that will make a big difference in the day-to-day lives of outer suburban families.



WALLAN YOUTH SERVICES HUB

119 Wellington Street, Wallan 3756

Background: The Growing Suburbs Fund will partner with Mitchell Shire Council to redevelop an unused Council building into a dedicated Youth Services Hub in the heart of Wallan township. The hub will deliver and facilitate the co-location of best-practice youth mental health services and develop a range of health and well-being services to better support the rapidly expanding number of at risk youth in Mitchell Shire.

The redevelopment project will transform the existing building into an integrated and contemporary youth service hub. Works will include:

- 3 Youth Program Rooms
- 3 Multiuse office space
- Storage facilities
- Open plan kitchen
- Landscaped passive open space, seating and shade
- Modern reception and waiting area
- Accessible and ambulant toilet facilities.

Mitchell Shire Council is located approximately 60 km north of the Melbourne Central Business District and is bounded by Hume and Whittlesea councils to the south.

The southern tip has experienced significant residential growth in recent years due to affordable new housing and infrastructure to support an easy commute to Melbourne. Most of the shire consists of rural land. The local economy is primarily agriculture and food manufacturing. It covers an area of 2,864 square km with an estimated population of approximately 43,000 in 2017, which is expected to grow to about 82,000 by 2031¹.

¹ Victoria in the Future, 2016 <http://profile.id.com.au/mitchell>

GROWING SUBURBS FUND 2018-19

Expected date of commencement: February 2019

Expected date of completion: December 2019

Total Project Cost: \$1,736,189

Growing Suburbs Fund: \$645,789

Other contributions:

- Mitchell Shire Council \$1,090,400

Other project in Mitchell Shire Council to receive funding from the 2018/19 Growing Suburbs Fund are:

- Wallan East Relocatable Early Learning Centre Project (\$2,170,032)
- Activating Ryan's Creek Reserve (\$1,000,000)
- Kilmore Creek Pedestrian Bridge (\$745,000)
- Wallan Play Space Upgrades and Half Court Provisions (\$175,000)
- Centenary Drive Kilmore Play Space Upgrade (\$95,000)
- Outdoor Exercise Equipment (\$142,301)



Figure 1 – Project location

Mitchell Shire Council received a total of \$4.97 million for seven projects under the Growing Suburbs Fund 2018 – 2019.

Growing Suburbs Fund contributes to a mix of infrastructure projects that have a direct benefit to communities living in the outer suburbs.

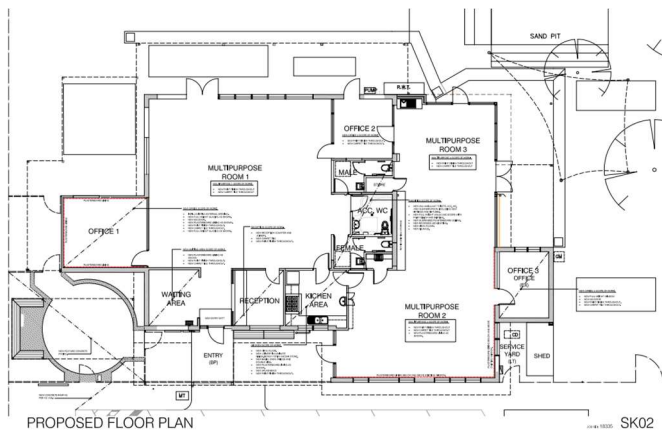


Figure 2 – Proposed floor plan

You can find out about other Growing Suburbs Fund Projects at localgovernment.vic.gov.au/gsf

For more information regarding these projects contact Local Infrastructure, DELWP.

Email: gsf@delwp.vic.gov.au or phone: 9948 8536

© The State of Victoria Department of Environment, Land, Water and Planning 2020



This work is licensed under a Creative Commons Attribution 4.0 International licence. You are free to re-use the work under that licence, on the condition that you credit the State of Victoria as author. The licence does not apply to any images, photographs or branding, including the Victorian Coat of Arms, the Victorian Government logo and the Department of Environment, Land, Water and Planning (DELWP) logo. To view a copy of this licence, visit <http://creativecommons.org/licenses/by/4.0/>

ISBN 978-1-76047-701-1 (pdf/online)

Disclaimer

This publication may be of assistance to you but the State of Victoria and its employees do not guarantee that the publication is without flaw of any kind or is wholly appropriate for your particular purposes and therefore disclaims all liability for any error, loss or other consequence which may arise from you relying on any information in this publication.

Accessibility

If you would like to receive this publication in an alternative format, please telephone the DELWP Customer Service Centre on 136186, email customer.service@delwp.vic.gov.au, or via the National Relay Service on 133 677 www.relayservice.com.au. This document is also available on the internet at www.delwp.vic.gov.au.