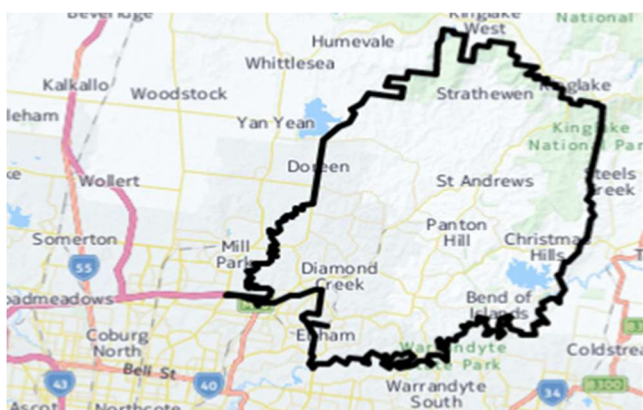


# Growing Suburbs Fund 2022-23

The Growing Suburbs Fund (GSF) is a \$425M contribution to support the delivery of high priority community infrastructure projects for Victoria's diverse and fast-growing outer suburbs. Designed to support the existing and future local infrastructure needs of Melbourne's interface and peri-urban communities, the GSF brings forward local infrastructure projects that are essential to the liveability of outer suburban families.

## Nillumbik Shire Council



Nillumbik Shire Council is located 25 km north-east of the Melbourne Central Business District, and the southern boundary is the Yarra River. It is predominantly urban to the South while the north of the municipality includes significant features like the Kinglake National Park and Sugarloaf Reservoir.

Nillumbik Shire Council is part of the interface council area and recorded a growth rate of 0.2% in 2019-20<sup>1</sup>. The population is projected to grow from 65,219 in 2020 to about 70,314 or 7.8% per cent by 2036<sup>2</sup>.

Victoria's population growth slowed during the pandemic period with the impact over this time mainly felt in the inner and middle suburbs of Melbourne; regional areas were less affected due to increased migration from Melbourne. Based on the latest available data, areas across Victoria are now expected to return to normal rates and patterns.

## Ryans Reserve Rejuvenation Project

85 Broad Gully Road, Diamond Creek 3089

The Growing Suburbs Fund will assist Nillumbik Shire Council to rejuvenate Ryans Reserve to provide increased participation opportunities for all ages and abilities in an inclusive and diverse environment.

### The scope of the project includes:

- A scooter loop
- DDA compliant public amenities
- BBQ and BBQ shelter
- New playground equipment
- Seating and landscaping
- DDA compliant paved areas

**Expected date of commencement:** March 2024

**Expected date of completion:** October 2024

**Total Project Cost:** \$1,190,837

**Growing Suburbs Fund:** \$1,190,837

**The other projects in Nillumbik Shire Council to receive funding from the 2022-23 Growing Suburbs Fund are:**

- Diamond Valley Library Outdoor Space Revitalisation (\$438,243)
- Diamond Creek Community Recreation Park (\$2,163,424)

<sup>1</sup> ABS Regional Population Growth, March 2022

<sup>2</sup> Victoria in Future, 2019

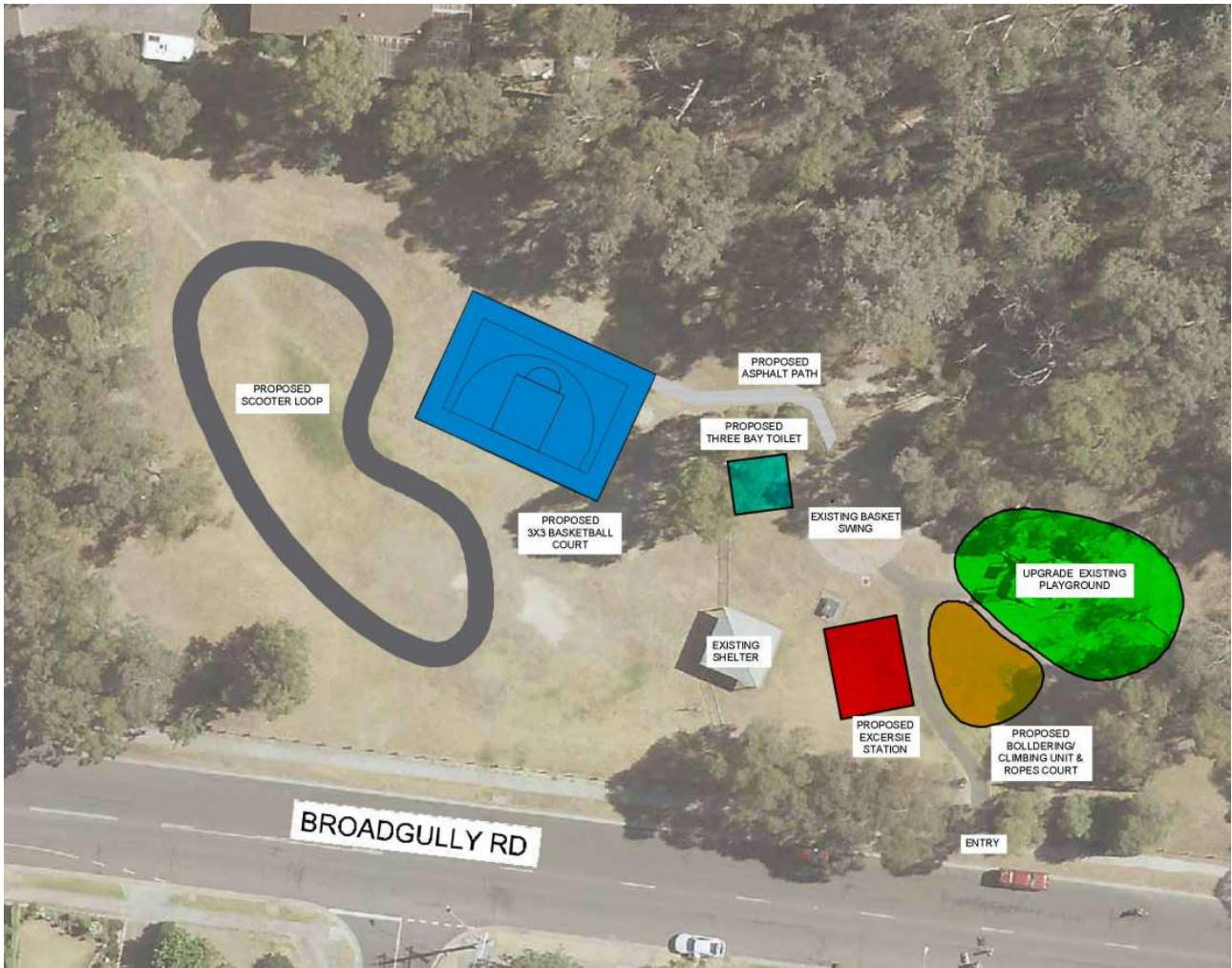


Figure 1 Concept Plan

You can find out about other Growing Suburbs Fund projects at <https://www.localgovernment.vic.gov.au/grants/growing-suburbs-fund>.

For more information about the Growing Suburbs Fund, please contact [gsf@ecodev.vic.gov.au](mailto:gsf@ecodev.vic.gov.au).

Authorised by The Hon. Melissa Horne MP, Minister for Local Government

Department of Government Services  
 © Copyright State of Victoria,  
 Department of Jobs, Precincts and Regions 2023

Except for any logos, emblems, trademarks, artwork, and photography this document is made available under the terms of the Creative Commons Attribution 3.0 Australia license.

This document is also available in an accessible format at [dgs.vic.gov.au](https://dgs.vic.gov.au)