

The Growing Suburbs Fund is a contribution towards meeting critical local infrastructure needs for communities in Melbourne's diverse and fast-growing outer suburbs. It is positioned to quickly respond to the pressures being experienced by interface communities by bringing forward local infrastructure projects that will make a big difference in the day-to-day lives of outer suburban families.



Whittlesea City Council is located about 20 km north of the Melbourne Central Business District. The southern parts of the city are established urban areas and current residential developments are extending towards the north of the municipality.

Whittlesea City Council is home to an ethnically-diverse community, with more than half of the residents from non-English speaking backgrounds. In 2018, the population of Whittlesea City Council grew 3.5 per cent compared with the national average of 1.6 per cent. The population is projected to grow by 63.2 percent from around 223,300 in 2018, to about 364,500 in 2036.<sup>1</sup>

### QUARRY HILLS REGIONAL PARKLAND

105E Hunters Road, South Morang 3752

**Background:** The Growing Suburbs Fund will assist Whittlesea City Council to deliver Stage 1 of the Quarry Hills Regional Parkland Master Plan. The project involves the construction of a new regional level public park, to encourage passive recreation in a safe and accessible public space.

The project elements include:

- accessible public toilets
- path networks and self- guided walking trail
- a regional scale playground for junior play
- a Super Fly high ropes course and a Mini-me Zipline course
- hardcourt area with multi lined sports
- ornamental lake and wetland
- public orchard
- community social gathering spaces
- aboriginal cultural & environmental learning opportunities including the stone dairy
- fitness tracks and stations
- access roads and carparking.

<sup>1</sup> Victoria in the Future, 2019



# GROWING SUBURBS FUND 2019-20

The footprint of the Quarry Hills Regional Parkland is defined by the Urban Growth Boundary where it interfaces with the growth areas of Epping, Wollert, South Morang and Mernda. Council has continued to facilitate the creation of this regionally significant parkland through a thorough consultation process.

**Total Project Cost:** \$5,000,000

**Growing Suburbs Fund:** \$2,500,000

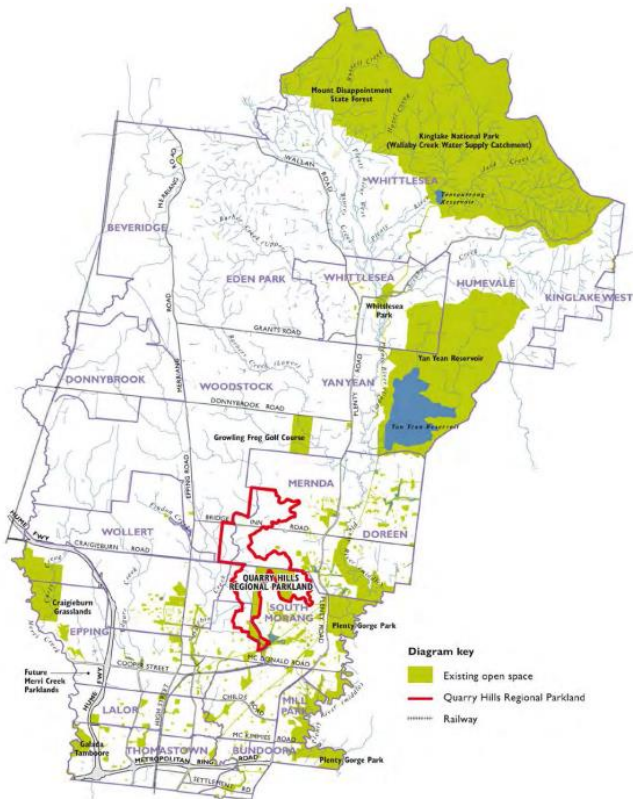
**Other contributions:**

- Whittlesea City Council \$2,500,000

**Other projects in the Whittlesea City Council to receive funding from the 2019-20 Growing Suburbs Fund are:**

- Whittlesea Community Skate Park (\$375,000)
- Whittlesea Public Gardens Revitalisation (\$2,000,000)
- Lalor Streetscape Upgrade (\$1,500,000)
- McLeans Road Kindergarten Upgrade (\$500,000)

Whittlesea City Council received a total of \$6,875,000 million for five projects under the Growing Suburbs Fund 2019-2020.



**Figure 1: Quarry Hills Regional Parkland - Whittlesea Context Plan (Whittlesea City Council)**

**Expected date of commencement:** June 2020

**Expected date of completion:** September 2022

Growing Suburbs Fund contributes to a mix of infrastructure projects that have a direct benefit to communities living in the outer suburbs.

You can find out about other Growing Suburbs Fund Projects at [localgovernment.vic.gov.au/gsf](http://localgovernment.vic.gov.au/gsf)

For more information regarding these projects contact Local Infrastructure, DELWP.

Email: [gsf@delwp.vic.gov.au](mailto:gsf@delwp.vic.gov.au) or phone: 9948 8536

© The State of Victoria Department of Environment, Land, Water and Planning 2020



This work is licensed under a Creative Commons Attribution 4.0 International licence. You are free to re-use the work under that licence, on the condition that you credit the State of Victoria as author. The licence does not apply to any images, photographs or branding, including the Victorian Coat of Arms, the Victorian Government logo and the Department of Environment, Land, Water and Planning (DELWP) logo. To view a copy of this licence, visit <http://creativecommons.org/licenses/by/4.0/>

ISBN 978-1-76105-095-4 (pdf/online/MS word)

**Disclaimer**

This publication may be of assistance to you but the State of Victoria and its employees do not guarantee that the publication is without flaw of any kind or is wholly appropriate for your particular purposes and therefore disclaims all liability for any error, loss or other consequence which may arise from you relying on any information in this publication.

## Accessibility

If you would like to receive this publication in an alternative format, please telephone the DELWP Customer Service Centre on 136186, email [customer.service@delwp.vic.gov.au](mailto:customer.service@delwp.vic.gov.au), or via the National Relay Service on 133 677 [www.relayservice.com.au](http://www.relayservice.com.au). This document is also available on the internet at [www.delwp.vic.gov.au](http://www.delwp.vic.gov.au).