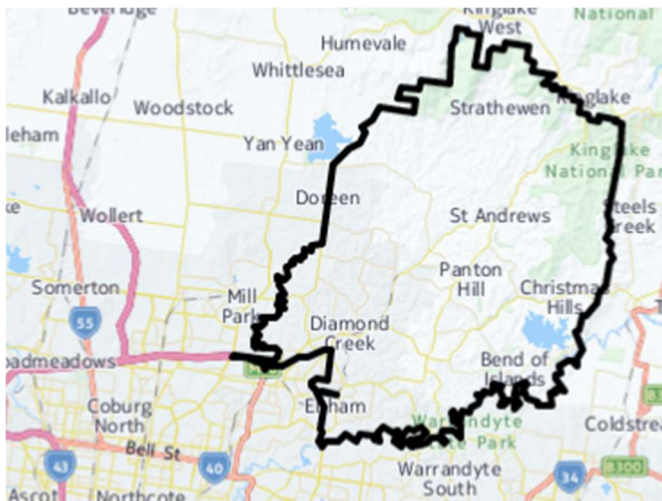


The Growing Suburbs Fund is a contribution towards meeting critical local infrastructure needs for communities in Melbourne's diverse and fast-growing outer suburbs. It is positioned to quickly respond to the pressures being experienced by interface communities by bringing forward local infrastructure projects that will make a big difference in the day-to-day lives of outer suburban families.



Nillumbik Shire Council is located 25 km North-east of the Melbourne Central Business District, and the southern boundary is the Yarra River. It is predominantly urban to the South while the north of the municipality includes significant features like the Kinglake National Park and Sugarloaf Reservoir.

In 2017, Nillumbik Shire recorded an annual resident population growth rate of 0.7 per cent, of 65,000 residents<sup>1</sup>.

The population is forecasted to grow to 68,000, by 4 per cent, by 2031.

### DIAMOND CREEK REGIONAL PARK PLAYSPACE

Diamond Creek Regional Reserve – east of Watkins Street, Diamond Creek

**Background:** The Growing Suburbs Fund will help Nillumbik Shire Council develop a playspace comprised of 5 interconnected play zones at the Diamond Creek Regional Reserve to address a gap in the provision of playspaces in Nillumbik, in particular the catchment of Diamond Creek.

The project will deliver a play and recreation space comprising a series of integrated play and activity 'zones' located in the Diamond Creek Reserve. As well as a range of playspace zones catering for different ages, abilities and interests, the project will include picnic/social areas, BBQs, toilets, pathways and signage.

**Expected date of commencement:** September 2019

**Expected date of completion:** late 2020

**Total Project Cost:** \$2,700,000

**Growing Suburbs Fund:** \$2,500,000

**Other contributions:**

- Nillumbik Shire Council contributes \$175,000
- In-Kind Contributions of \$25,000

<sup>1</sup> Victoria in the Future, 2016 <http://profile.id.com.au/nillumbik>

# GROWING SUBURBS FUND 2018-19

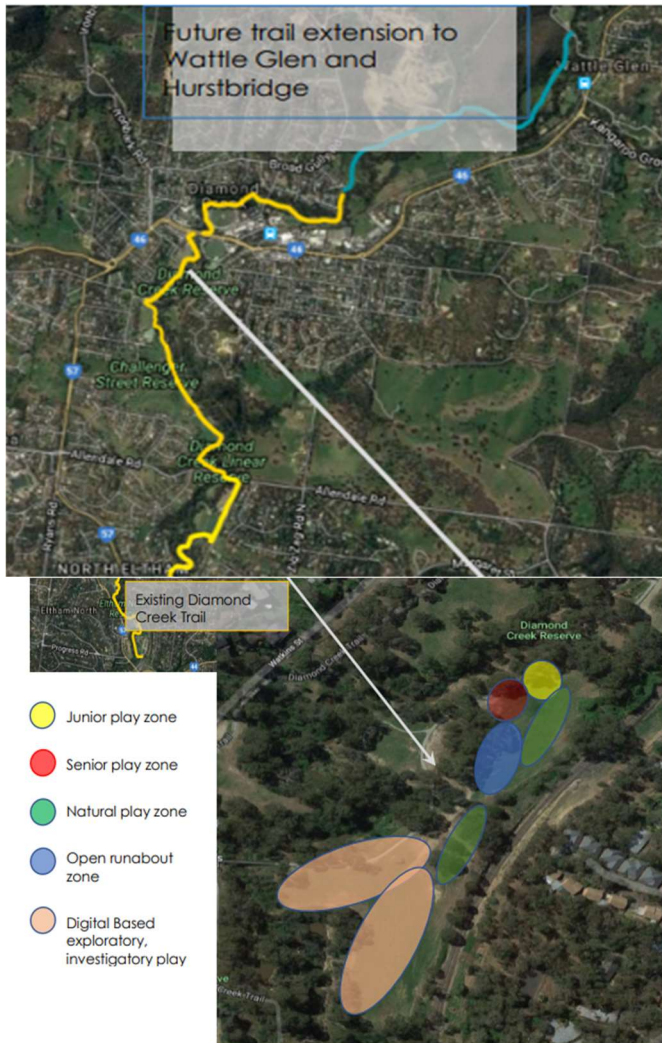


Figure 1 – Location of the Project site and Project zones

Other projects in Nillumbik Shire Council to receive funding from the 2018/19 Growing Suburbs Fund are:

- Eltham North Adventure Playground Enhancement (\$569,641)
- Greensborough Hockey Multi-Purpose Pavilion Redevelopment (\$2,000,000)

Nillumbik Shire Council will receive a total of \$5,069,641 for three projects under the Growing Suburbs Fund 2018-19 Round.

Growing Suburbs Fund contributes to a mix of infrastructure projects that have a direct benefit to communities living in the outer suburbs.

You can find out about other Growing Suburbs Fund Projects at [localgovernment.vic.gov.au/gsf](http://localgovernment.vic.gov.au/gsf)

For more information regarding these projects contact Local Infrastructure, DELWP.

Email: [gsf@delwp.vic.gov.au](mailto:gsf@delwp.vic.gov.au) or phone: 9948 8536

© The State of Victoria Department of Environment, Land, Water and Planning 2020



This work is licensed under a Creative Commons Attribution 4.0 International licence. You are free to re-use the work under that licence, on the condition that you credit the State of Victoria as author. The licence does not apply to any images, photographs or branding, including the Victorian Coat of Arms, the Victorian Government logo and the Department of Environment, Land, Water and Planning (DELWP) logo. To view a copy of this licence, visit <http://creativecommons.org/licenses/by/4.0/>

ISBN 978-1-76047-709-7 (pdf/online)

#### Disclaimer

This publication may be of assistance to you but the State of Victoria and its employees do not guarantee that the publication is without flaw of any kind or is wholly appropriate for your particular purposes and therefore disclaims all liability for any error, loss or other consequence which may arise from you relying on any information in this publication.

## Accessibility

If you would like to receive this publication in an alternative format, please telephone the DELWP Customer Service Centre on 136186, email [customer.service@delwp.vic.gov.au](mailto:customer.service@delwp.vic.gov.au), or via the National Relay Service on 133 677 [www.relayservice.com.au](http://www.relayservice.com.au). This document is also available on the internet at [www.delwp.vic.gov.au](http://www.delwp.vic.gov.au).