

Growing Suburbs Fund

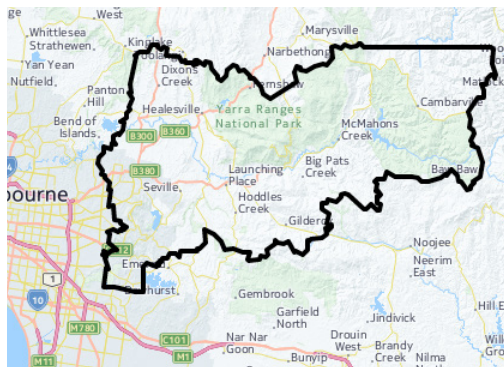
The Growing Suburbs Fund is providing much needed funding to help interface councils deliver new local infrastructure. The \$150 million investment is making a big difference in the day-to-day lives of outer suburban families by meeting critical local infrastructure needs for communities in Melbourne's diverse and fast-growing outer suburbs.



Kilsyth Centre of Excellence – Eastern Ranges Regional Facilities Upgrade

95 Colchester Road, Kilsyth VIC 3137

YARRA RANGES SHIRE COUNCIL



YARRA RANGES SHIRE COUNCIL

Yarra Ranges is located in Melbourne's outer east approximately 30 km from Melbourne's central business district and covers an area of 2,470 km². It is one of the most diverse municipalities in the state with over 55 suburbs, townships, small communities and rural areas. Approximately 70% of the shire's population live in the urban areas located in the west of the municipality which accounts for approximately 3% of its landmass.

Victoria in the Future, 2014 <http://profile.id.com.au/yarra-ranges>

PROJECT DESCRIPTION

The Growing Suburbs Fund will help improve the existing facilities at Kilsyth Oval to benefit all levels of AFL participation.

When complete the facility will specialise in the delivering of education programs, coach and player development programs, as well as an AFL Youth Girls Academy.

The existing Kilsyth Oval Pavilion will be renovated and extended, to provide:

- Mixed gender change facilities and umpire rooms
- Coach and trainer rooms; and
- A multi-purpose room, kitchen, and gym.

Expected completion: Mid 2019

Growing Suburbs Fund: \$900,000

Other Contributions: \$1,200,000

Other projects in Yarra Ranges Shire to receive funding from the 2016/17 Growing Suburbs Fund are:

- Belgrave South Community Sports Pavilion (\$500,000)
- Changing Places – Yarra Glen (\$125,000)
- Upwey Tecoma Community Recreational and Sporting Hub (\$1,000,000)

Read about other Growing Suburbs Fund Projects on www.localgovernment.vic.gov.au/gsf

For more information regarding this project contact Local Infrastructure, DELWP.
Email: gsf@delwp.vic.gov.au and Ph: 9948 8551



Environment,
Land, Water
and Planning