

Growing Suburbs Fund

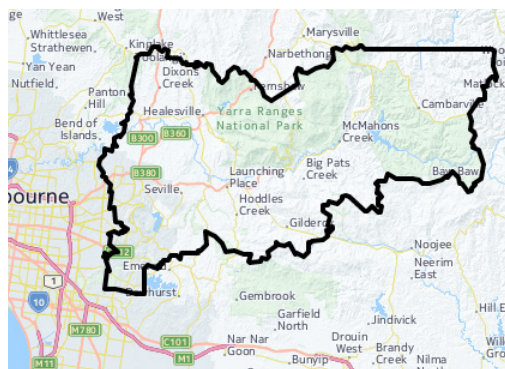
The Growing Suburbs Fund is providing much needed funding to help interface councils deliver new local infrastructure. The \$150 million investment is making a big difference in the day-to-day lives of outer suburban families by meeting critical local infrastructure needs for communities in Melbourne's diverse and fast-growing outer suburbs.



Belgrave South Community Sports Pavilion

3/10-12 Gilmore Court, Belgrave South VIC 3160

YARRA RANGES SHIRE COUNCIL



YARRA RANGES SHIRE COUNCIL

Yarra Ranges is located in Melbourne's outer east approximately 30 km from Melbourne's central business district and covers an area of 2,470 km². It is one of the most diverse municipalities in the state with over 55 suburbs, townships, small communities and rural areas. Approximately 70% of the shire's population live in the urban areas located in the west of the municipality which accounts for approximately 3% of its landmass.

Victoria in the Future, 2014 <http://profile.id.com.au/yarra-ranges>

PROJECT DESCRIPTION

Funding from the Growing Suburbs Fund will help improve the opportunities for community members to participate in sport and recreation in Belgrave South.

A new purpose built pavilion will provide a central place to hold meetings, social gatherings and community events. The facilities will include:

- A multi-purpose room
- A meeting room
- A kitchen and servery
- Change rooms, toilets and umpiring facilities; and
- Office and storage facilities.

Expected completion: Early 2018

Growing Suburbs Fund: \$500,000

Other Contributions: \$1,950,000

Other projects in Yarra Ranges Shire to receive funding from the 2016/17 Growing Suburbs Fund are:

- Changing Places – Yarra Glen (\$125,000)
- Upwey Tecoma Community Recreational and Sporting Hub (\$1,000,000)
- Kilsyth Centre of Excellence – Eastern Ranges Regional Facilities Upgrade (\$900,000)

Read about other Growing Suburbs Fund Projects on www.localgovernment.vic.gov.au/gsf

For more information regarding this project contact Local Infrastructure, DELWP.
Email: gsf@delwp.vic.gov.au and Ph: 9948 8551



Environment,
Land, Water
and Planning