

The Growing Suburbs Fund is a contribution towards meeting critical local infrastructure needs for communities in Melbourne's diverse and fast-growing outer suburbs. It is positioned to quickly respond to the pressures being experienced by interface communities by bringing forward local infrastructure projects that will make a big difference in the day-to-day lives of outer suburban families.



### TAYLORS CREEK SHARED PATH

Along Taylors Creek (between King William Drive, Taylors Lane and Northern Highway), Wallan 3756

**Background:** The Growing Suburbs Fund will partner with Mitchell Shire Council to deliver a new multi-use active trail path and off-road connection that will improve Wallan's public realm and amenities. This shared path project will link the town's west to Wallan's main activity centre, retail and health services, local primary and secondary schools, and neighbouring recreational and leisure facilities.

The Taylors Creek Shared Path project will address the gaps of open passive and active spaces in the southern boundary of Mitchell Shire and will respond to the disconnection and isolation felt by Wallan's expanding estate development taking place further from the main activity centre.

The project will deliver 3.25km of 2.5m wide shared path infrastructure with solar LED lighting, intersection reconfigurations to reinforce pedestrian and cycling priority. It will also include public realm improvements inclusive of 20 seats, drinking fountains, way-finding and signage. There will be future scope to include exercise stations or equipment along the trail route.

Mitchell Shire Council is located approximately 60 km north of the Melbourne Central Business District and is bounded by Hume and Whittlesea councils to the south.

The southern tip has experienced significant residential growth in recent years due to affordable new housing and infrastructure to support an easy commute to Melbourne. Most of the shire consists of rural land. The local economy is primarily agriculture and food manufacturing. It covers an area of 2,864 square km with an estimated population of approximately 44,300 in 2018, which is projected to grow to about 97,700 by 2036.<sup>1</sup>

<sup>1</sup> Victoria in the Future, 2019

# GROWING SUBURBS FUND 2019-20

**Expected date of commencement:** September 2020

**Expected date of completion:** February 2021

**Total Project Cost:** \$1,786,445

**Growing Suburbs Fund:** \$1,688,050

**Other contributions:** Mitchell Shire Council \$98,395

**Other project in Mitchell Shire Council to receive funding from the 2019-20 Growing Suburbs Fund are:**

- Activation of Broadford Parks and Play Spaces (\$720,000)
- Kilmore Rejuvenation – A Make Over for Sydney Street's Retail Core (\$2,423,550)

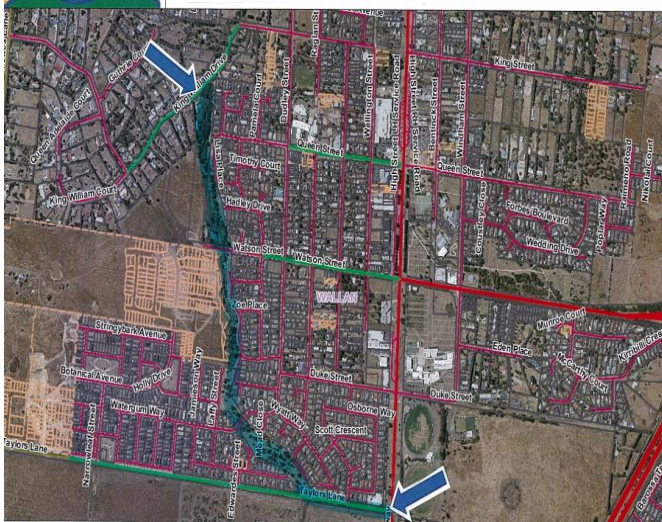
Mitchell Shire Council received a total of \$4,831,600 million for three projects under the Growing Suburbs Fund 2019-20.

Growing Suburbs Fund contributes to a mix of infrastructure projects that have a direct benefit to communities living in the outer suburbs.

You can find out about other Growing Suburbs Fund Projects at [localgovernment.vic.gov.au/gsf](http://localgovernment.vic.gov.au/gsf)

For more information regarding these projects contact Local Infrastructure, DELWP.

Email: [gsf@delwp.vic.gov.au](mailto:gsf@delwp.vic.gov.au) or phone: 9948 8536



**Figure 1 – Taylor's Creek Shared Path – Location highlighted in blue (Mitchell Shire Council)**



**Figure 1 – Taylor's Creek Shared Path – Current conditions (Mitchell Shire Council)**

© The State of Victoria Department of Environment, Land, Water and Planning 2020



This work is licensed under a Creative Commons Attribution 4.0 International licence. You are free to re-use the work under that licence, on the condition that you credit the State of Victoria as author. The licence does not apply to any images, photographs or branding, including the Victorian Coat of Arms, the Victorian Government logo and the Department of Environment, Land, Water and Planning (DELWP) logo. To view a copy of this licence, visit <http://creativecommons.org/licenses/by/4.0/>

ISBN 978-1-76105-083-1 (pdf/online/MS word)

#### Disclaimer

This publication may be of assistance to you but the State of Victoria and its employees do not guarantee that the publication is without flaw of any kind or is wholly appropriate for your particular purposes and therefore disclaims all liability for any error, loss or other consequence which may arise from you relying on any information in this publication.

#### Accessibility

If you would like to receive this publication in an alternative format, please telephone the DELWP Customer Service Centre on 136186, email [customer.service@delwp.vic.gov.au](mailto:customer.service@delwp.vic.gov.au), or via the National Relay Service on 133 677 [www.relayservice.com.au](http://www.relayservice.com.au). This document is also available on the internet at [www.delwp.vic.gov.au](http://www.delwp.vic.gov.au).