

The Growing Suburbs Fund is a contribution towards meeting critical local infrastructure needs for communities in Melbourne's diverse and fast-growing outer suburbs. It is positioned to quickly respond to the pressures being experienced by interface communities by bringing forward local infrastructure projects that will make a big difference in the day-to-day lives of outer suburban families.



### GLADSTONE PARK PAVILION REDEVELOPMENT

Circular Road, Gladstone Park 3043

**Background:** The Growing Suburbs Fund will assist Hume City Council to provide new changerooms and associated works to support the growth in female participation at the Gladstone Park Reserve.

The project will deliver a standalone modular pavilion creating an extension to existing facilities and will include the following:

- 2 x new changerooms with gender inclusive amenities
- Trainers/First Aid Rooms in each changeroom
- Dual umpire's rooms (male and female usage)
- Club storage areas
- Utility/cleaner room
- External covered viewing area
- Compound fence around pavilion
- Accessible public toilet

Hume City Council is a growing, urban fringe municipality about 20 km from the Melbourne Central Business District. The southern parts of the city are well-established urban areas while the north remains rural in character. It has a young population, with 31 per cent of residents under 18 years of age.

Hume City Council is experiencing significant growth at a rate of 4.3 per cent in 2018 - outstripping the national average growth rate of 1.6 per cent. The resident population in Hume City Council estimated at 224,400 in June 2018 is projected to grow by 53 per cent, to about 344,000 by 2036.<sup>1</sup>

<sup>1</sup> Victoria in the Future, 2019

# GROWING SUBURBS FUND 2019-20

**Expected date of commencement:** November 2020

**Expected date of completion:** March 2021

**Total Project Cost:** \$750,000

**Growing Suburbs Fund:** \$400,000

**Other contributions:**

- Hume City Council contribution \$350,000

**Other projects in Hume City Council to receive funding from the 2019-20 Growing Suburbs Fund are:**

- Goonawarra Neighbourhood House Redevelopment (\$228,600)
- Greenvale Recreation Reserve Playspace (\$500,000)
- Cloverton Recreation Reserve Pavilion (\$1,495,000)
- Kalkallo North Community Centre (\$2,000,000)

Hume City Council will receive a total of \$4,623,600 for five projects under the Growing Suburbs Fund 2019-20.

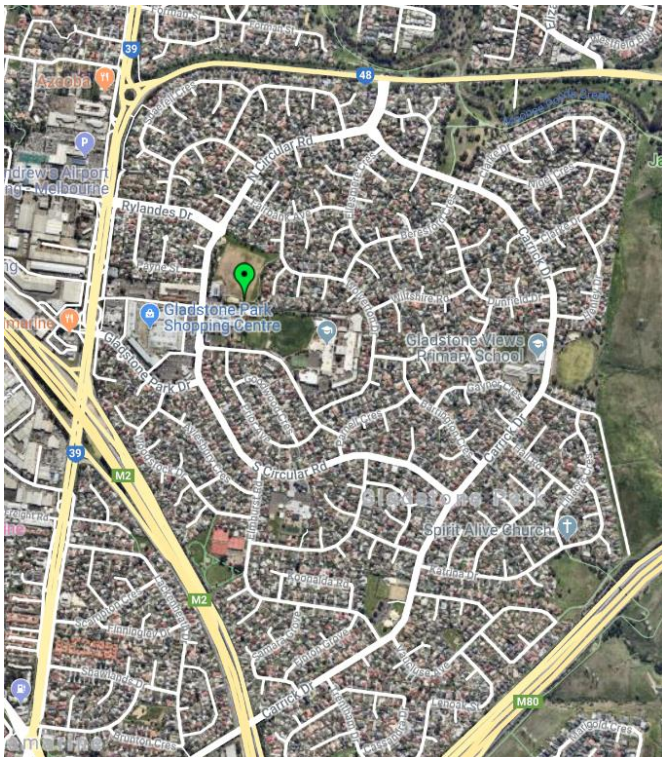


Figure 1: Gladstone Park pavilion location (Hume City Council)

Growing Suburbs Fund contributes to a mix of infrastructure projects that have a direct benefit to communities living in the outer suburbs.

You can find out about other Growing Suburbs Fund Projects at [localgovernment.vic.gov.au/gsf](http://localgovernment.vic.gov.au/gsf)

For more information regarding these projects contact Local Infrastructure, DELWP.

Email: [gsf@delwp.vic.gov.au](mailto:gsf@delwp.vic.gov.au) or phone: 9948 8536

© The State of Victoria Department of Environment, Land, Water and Planning 2020



This work is licensed under a Creative Commons Attribution 4.0 International licence. You are free to re-use the work under that licence, on the condition that you credit the State of Victoria as author. The licence does not apply to any images, photographs or branding, including the Victorian Coat of Arms, the Victorian Government logo and the Department of Environment, Land, Water and Planning (DELWP) logo. To view a copy of this licence, visit <http://creativecommons.org/licenses/by/4.0/>

ISBN 978-1-76105-062-6 (pdf/online/MS word)

#### Disclaimer

This publication may be of assistance to you but the State of Victoria and its employees do not guarantee that the publication is without flaw of any kind or is wholly appropriate for your particular purposes and therefore disclaims all liability for any error, loss or other consequence which may arise from you relying on any information in this publication.

#### Accessibility

If you would like to receive this publication in an alternative format, please telephone the DELWP Customer Service Centre on 136186, email [customer.service@delwp.vic.gov.au](mailto:customer.service@delwp.vic.gov.au), or via the National Relay Service on 133 677 [www.relayservice.com.au](http://www.relayservice.com.au). This document is also available on the internet at [www.delwp.vic.gov.au](http://www.delwp.vic.gov.au).