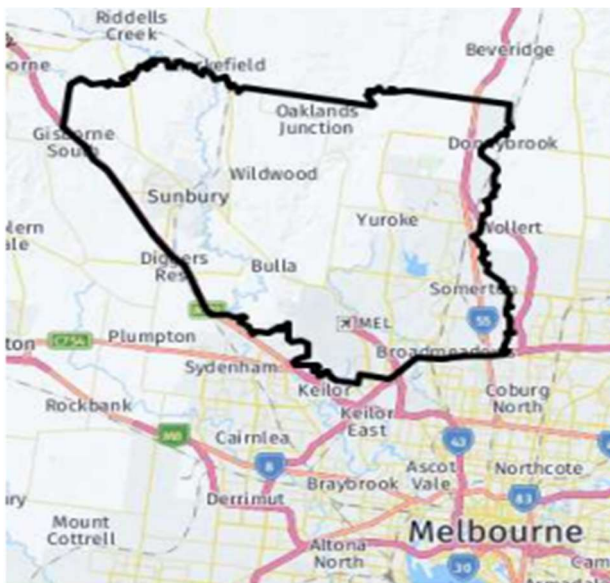


The Growing Suburbs Fund is a contribution towards meeting critical local infrastructure needs for communities in Melbourne's diverse and fast-growing outer suburbs. It is positioned to quickly respond to the pressures being experienced by interface communities by bringing forward local infrastructure projects that will make a big difference in the day-to-day lives of outer suburban families.



### **BULLA VILLAGE TENNIS CLUB COMMUNITY PAVILION**

65 Green Street, Bulla 3428

**Background:** The Growing Suburbs Fund will help Hume City Council build a new modular pavilion for the Bulla Village Tennis Club and surrounding community to provide a space for the community to participate in recreational and social activities. The Victorian Government's 2018-19 Growing Suburbs Fund contributes \$300,000 and Hume City Council provides \$300,000 towards this project.

The development of the new pavilion will be in Bulla Recreation Reserve in Green Street. This Reserve has four newly resurfaced synthetic tennis courts, a cricket pitch and vast areas of public open space. The funding will replace the current pavilion which is on a faulty foundation and has been decommissioned.

The new pavilion will include a 120.5 m<sup>2</sup> social room, a huge outdoor deck area, office, storeroom, bar, commercial kitchen, female and male amenities and is accessible for all abilities. This project will make the site more attractive as an overflow ground for both tennis and cricket, increasing the use of the facility. The community will also be able to use the facility for public and social gatherings.

Hume City Council is a growing, urban fringe municipality about 20 km from the Melbourne Central Business District. The southern parts of the city are well-established urban areas while the north remains rural in character. It has a young population, with 31 per cent of residents under 18 years of age.

Hume City Council is experiencing significant growth at a rate of 3.9 per cent - outstripping the national average growth rate of 1.6 per cent. The resident population in Hume City Council is estimated at 215,930 (2017) and is forecasted to grow by 36 per cent, to about 294,000 by 2031.<sup>1</sup>

<sup>1</sup> Victoria in the Future, 2016 <http://profile.id.com.au/hume>



# GROWING SUBURBS FUND 2018-19

**Expected date of commencement:** September 2019  
**Expected date of completion:** July 2020

**Total Project Cost:** \$600,000

**Growing Suburbs Fund:** \$300,000

**Other contributions:** Hume City Council contributes \$300,000

**Other projects in Hume City Council to receive funding from the 2018/19 Growing Suburbs Fund are:**

- Galaxyland Playspace Redevelopment (\$500,000)
- Cloverton South Community Hub (\$2,656,891)
- Hume Tennis and Community Centre Playspace (\$450,000)
- Craigieburn Softball Centre (\$1,500,000)
- Connecting Sunbury Town Centre (\$375,000)

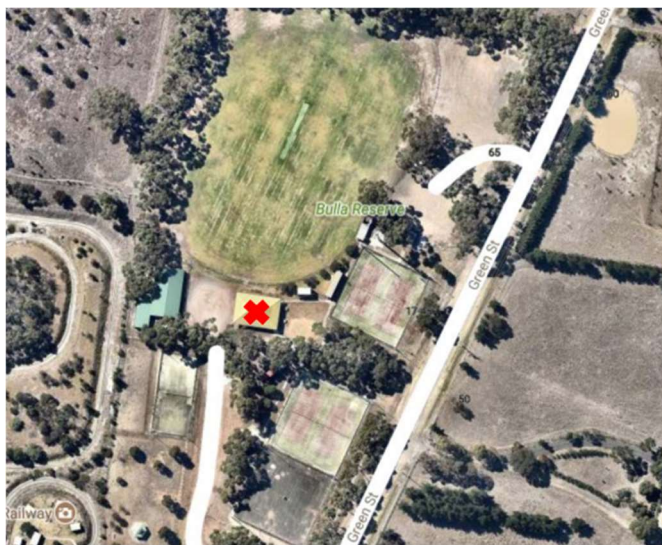


Figure 1: Aerial shot of current pavilion

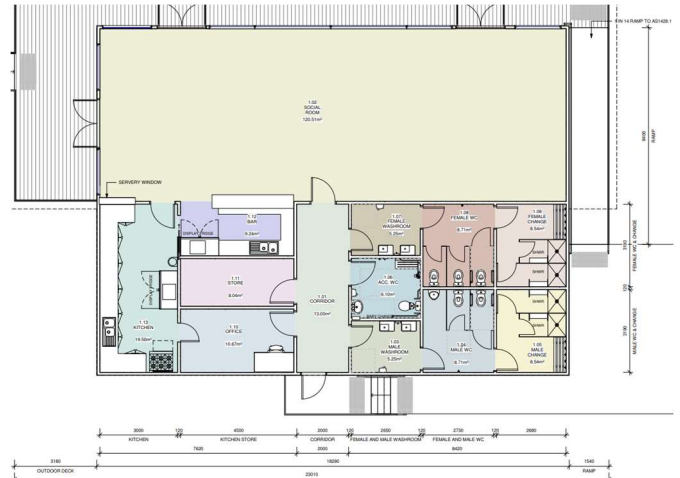


Figure 2: Draft proposed plan

Hume City Council will receive a total of \$5,781,891 for six projects under the Growing Suburbs Fund 2018/19 Round.

Growing Suburbs Fund contributes to a mix of infrastructure projects that have a direct benefit to communities living in the outer suburbs.

You can find out about other Growing Suburbs Fund Projects at [localgovernment.vic.gov.au/gsf](http://localgovernment.vic.gov.au/gsf)

For more information regarding these projects contact Local Infrastructure, DELWP.

Email: [gsf@delwp.vic.gov.au](mailto:gsf@delwp.vic.gov.au) or phone: 9948 8536

© The State of Victoria Department of Environment, Land, Water and Planning 2020



This work is licensed under a Creative Commons Attribution 4.0 International licence. You are free to re-use the work under that licence, on the condition that you credit the State of Victoria as author. The licence does not apply to any images, photographs or branding, including the Victorian Coat of Arms, the Victorian Government logo and the Department of Environment, Land, Water and Planning (DELWP) logo. To view a copy of this licence, visit <http://creativecommons.org/licenses/by/4.0/>

ISBN 978-1-76077-982-5 (pdf/online)

#### Disclaimer

This publication may be of assistance to you but the State of Victoria and its employees do not guarantee that the publication is without flaw of any kind or is wholly appropriate for your particular purposes and therefore disclaims all liability for any error, loss or other consequence which may arise from you relying on any information in this publication.

#### Accessibility

If you would like to receive this publication in an alternative format, please telephone the DELWP Customer Service Centre on 136186, email [customer.service@delwp.vic.gov.au](mailto:customer.service@delwp.vic.gov.au), or via the National Relay Service on 133 677 [www.relayservice.com.au](http://www.relayservice.com.au). This document is also available on the internet at [www.delwp.vic.gov.au](http://www.delwp.vic.gov.au).