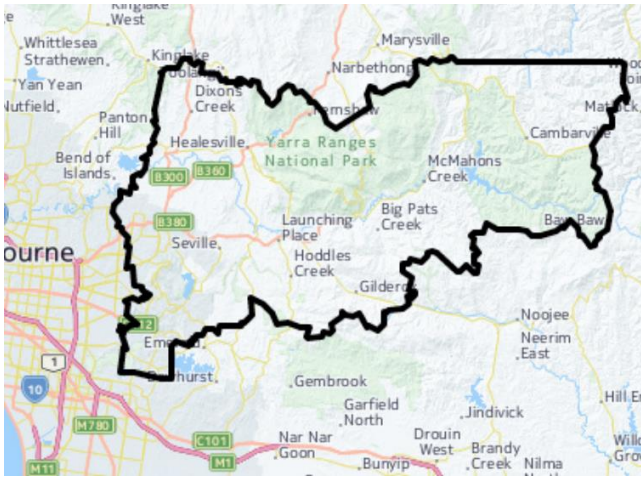


# Growing Suburbs Fund 2021-22

The Growing Suburbs Fund is a contribution towards meeting critical local infrastructure needs for communities in Melbourne's diverse and fast-growing outer suburbs. It is positioned to quickly respond to the pressures being experienced by interface and peri-urban communities by bringing forward local infrastructure projects that will make a big difference in the day-to-day lives of outer suburban families.

## Yarra Ranges Shire Council



Yarra Ranges Shire Council is located in Melbourne's outer east between 30 and 110 km from Melbourne's Central Business District. It covers an area of 2,470 km. Around 70 per cent of the Council's population live in the urban areas, which represent approximately three per cent of its landmass to the west of the municipality. The remaining population is distributed throughout rural areas.

Yarra Ranges Shire Council is part of the interface council area and recorded a growth rate of 0.3% in 2019-20<sup>1</sup>. The population is projected to grow from 159,995 in 2020 to about 183,821 or 14.9% per cent by 2036<sup>2</sup>.

Victoria's population has witnessed a considerable slow-down in growth due to COVID and a pause in overseas migration. This is mostly felt in the inner/middle suburbs of Melbourne but is still evident in outer suburbs.

<sup>1</sup> ABS Regional Population Growth March 2022

<sup>2</sup> Victoria in Future, 2019

<sup>1</sup> Victoria in Future, 2019

## Carmen Reserve Playspace

5 Carmen Court Lilydale, 3140

The Growing Suburbs Fund will assist Yarra Ranges Shire Council to upgrade an existing playground space in Lilydale.

The project will renew the existing playspace making it more accessible and inclusive.

The planned works will create a reserve that meets the diverse needs of the local and broader community.

The space has been designed to include a diversity in the types of spaces and play experiences by including formal equipment in addition to natural elements, artwork and storytelling.

New pathways and better linkages including connections to the Warburton Trail will make the reserve and surrounding trail more accessible.

The pathways along with additional seating and associated furniture, will improve accessibility and encourage wider community use of the reserve.

**Expected date of commencement:** December 2022

**Expected date of completion:** June 2023

**Total Project Cost:** \$258,000

**Growing Suburbs Fund:** \$129,000

**Other contributions:**

- Yarra Ranges Shire Council: \$129,000

**The other projects in Yarra Ranges Shire Council to receive funding from the Growing Suburbs Fund 2021-22 are:**

- Wesburn Pump Track (\$470,000)
- Climate Resilient Buildings for our Community (\$1,500,000)
- Glenvalley Reserve Playspace (\$129,000)

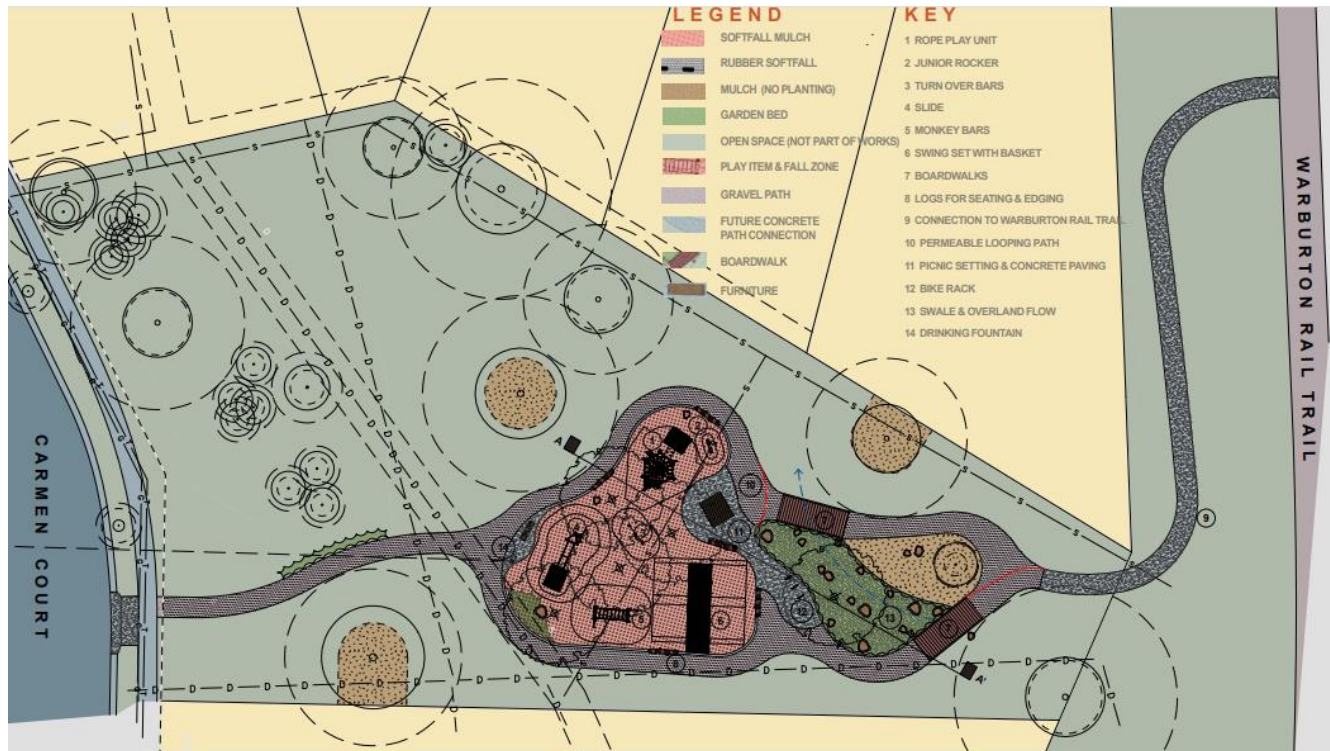


Figure 1: Concept design Urban Edge Landscape Architects

You can find out about other Growing Suburbs Fund projects at <https://www.localgovernment.vic.gov.au/grants/growing-suburbs-fund>

For more information regarding these projects contact the GSF team at [gsf@ecodev.vic.gov.au](mailto:gsf@ecodev.vic.gov.au)

Authorised by the Hon Shaun Leane MP, Minister for Local Government and Suburban Development

Department of Jobs, Precincts and Regions  
1 Spring Street Melbourne Victoria 3000  
Telephone (03) 9651 9999

© Copyright State of Victoria,  
Department of Jobs, Precincts and Regions 2022

Except for any logos, emblems, trademarks, artwork and photography this document is made available under the terms of the Creative Commons Attribution 3.0 Australia license.

This document is also available in an accessible format at [djpr.vic.gov.au](http://djpr.vic.gov.au)