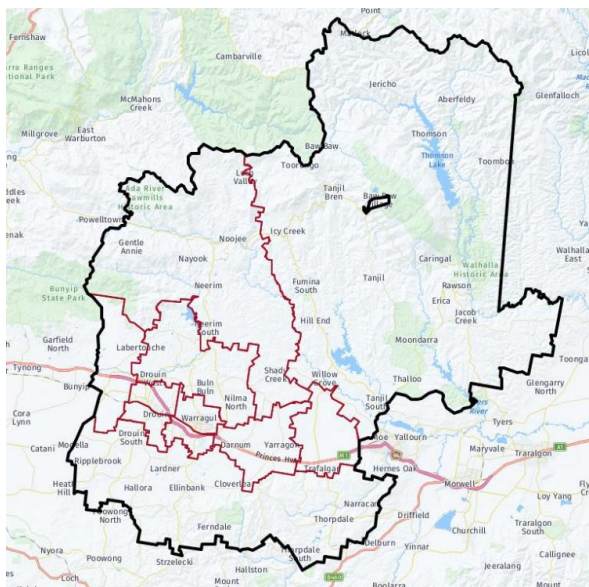


Growing Suburbs Fund 2020-21 Round 2

The Growing Suburbs Fund is a contribution towards meeting critical local infrastructure needs for communities in Melbourne's diverse and fast-growing outer suburbs. It is positioned to quickly respond to the pressures being experienced by interface and peri-urban communities by bringing forward local infrastructure projects that will make a big difference in the day-to-day lives of outer suburban families.

Baw Baw Shire Council



Baw Baw Shire is located in the West Gippsland region of Victoria, about 100 kilometres east of the Melbourne CBD. Baw Baw Shire is bounded by the Yarra Ranges Council area and Mansfield Shire in the north, Wellington Shire and Latrobe City in the east, South Gippsland Shire in the south, and Cardinia Shire in the west.

Known as one of Victoria's peri-urban councils, the current population of 53,396 is expected to grow significantly to 75,819 by 2036.¹

Bellbird Park East Multi-Use Pavilion

33 Young Street, Drouin 3818

The Growing Suburbs Fund will assist Baw Baw Shire Council to develop a new pavilion that will provide a multi-use community meeting and programming space with a commercial kitchen and female-friendly sporting facilities for Bellbird Park East.

The multi-use space will incorporate an operable wall to divide it into 2 useable rooms. Also included in the project is a carpark, drop off zone with disabled and emergency vehicle parking, new playground and barbecue area.

This project demonstrates council's commitment to the changing needs within Drouin, providing social and health benefits for a growing community.

Expected date of commencement: January 2022

Expected date of completion: April 2023

Total Project Cost: \$4,000,000

Growing Suburbs Fund: \$2,000,000

Other contributions:

- Baw Baw Shire Council: \$2,000,000

¹ Victoria in Future, 2019

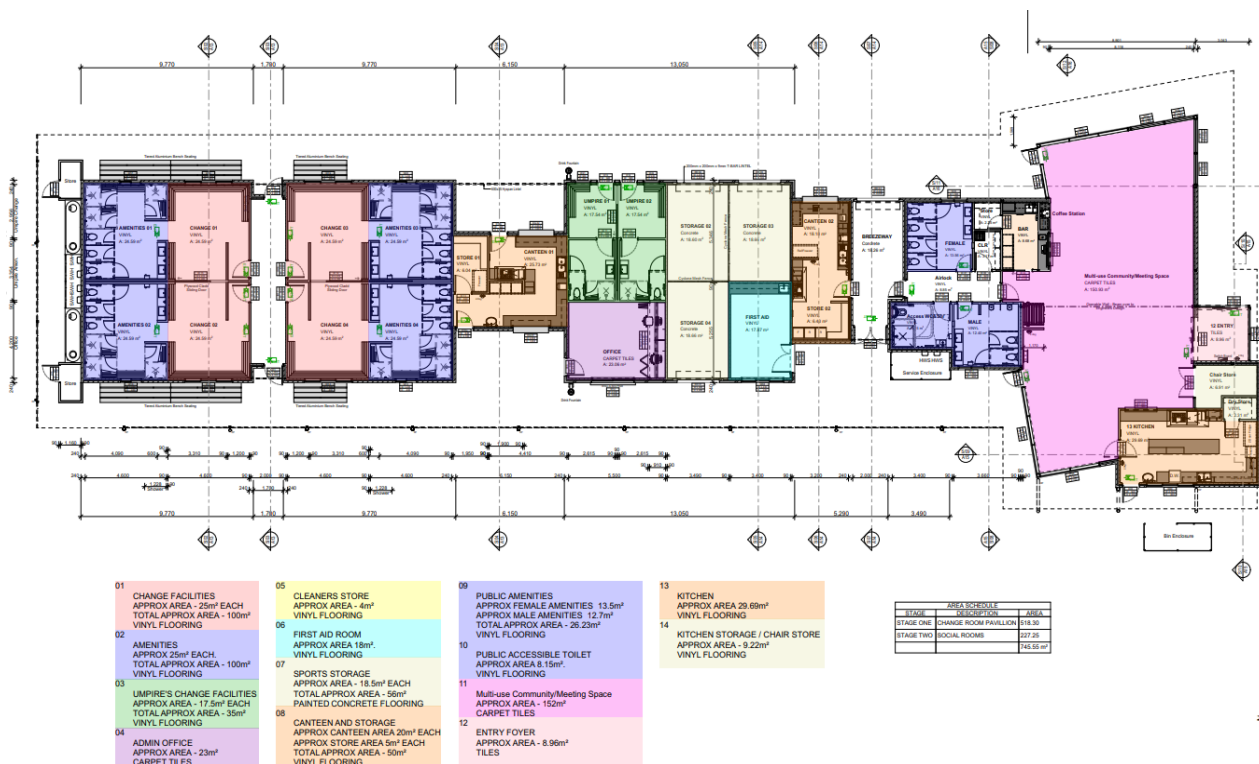


Figure 1: Concept design

You can find out about other Growing Suburbs Fund projects at <https://www.localgovernment.vic.gov.au/grants/growing-suburbs-fund>

For more information regarding these projects contact the GSF team at gsf@ecodev.vic.gov.au

Authorised by the Hon Shaun Leane MP, Minister for Local Government and Suburban Development
 Department of Jobs, Precincts and Regions
 1 Spring Street Melbourne Victoria 3000
 Telephone (03) 9651 9999

© Copyright State of Victoria,

Department of Jobs, Precincts and Regions 2019
 Except for any logos, emblems, trademarks, artwork and photography this document is made available under the terms of the Creative Commons Attribution 3.0 Australia license.

This document is also available in an accessible format at djpr.vic.gov.au