

The Growing Suburbs Fund is a contribution towards meeting critical local infrastructure needs for communities in Melbourne's diverse and fast-growing outer suburbs. It is positioned to quickly respond to the pressures being experienced by interface communities by bringing forward local infrastructure projects that will make a big difference in the day-to-day lives of outer suburban families.



Casey City Council is located in Melbourne's south-eastern suburbs, between 28 and 60 km from the Melbourne Central Business District. It is one of the fastest growing interface councils with a population growth rate of 4.2 per cent in 2018 when compared to the national average of 1.6 per cent. The population in Casey is predicted to increase from 340,400 in 2018 to 522,300 in 2036¹

Casey City Council encompasses a total land area of about 400 square kilometres. Rural land is used mainly for grazing, horse agistment, market gardening, commercial flower growing and open space and parklands. Casey City Council has a diverse community with about 36 per cent of residents speaking

a language other than English at home and a large young population with 22.7 per cent of residents under the age of 15 years.

CRANBOURNE NORTH ACTIVE OPEN SPACE COMMUNITY PAVILION DEVELOPMENT

195S Alisma Boulevard CRANBOURNE NORTH 3977

Project Description: The Growing Suburbs Fund will help Casey City Council to transform a greenfield site in Tulliallan Estate, Cranbourne North into a multipurpose community pavilion and active open space.

The development of the Cranbourne North Active Open Space Soccer/Cricket Facility and Community Pavilion includes the construction of a multipurpose community pavilion consisting of a community room, public amenities, kitchen, office and storage. The project will also deliver sports-specific spaces such as changerooms, amenities, as well as three soccer pitches and one cricket oval with nets as well as a playspace, viewing area, terracing and landscaping.

The project scope includes:

- Multipurpose community pavilion:
 - multipurpose community room
 - public female, male, unisex, accessible toilets
 - kitchen
 - office
 - storage

¹ Victoria in the Future, 2019

GROWING SUBURBS FUND 2019-20

- undercover gathering and spectator area with associated viewing and terracing
- Sport-specific spaces
 - 6 changerooms with unisex amenities
 - 2 unisex referee's rooms
 - first aid room
 - scorer's room
 - storage

The project seeks to deliver critical infrastructure that supports multi-use in order to improve participation opportunities for the Tulliallan Community and surrounds, thus leading to positive health and wellbeing outcomes.

The facility will also address the pressure on existing community facilities such as Tulliallan Primary School and Arbourlea Family and Community Centre.

Expected date of commencement: October 2020

Expected date of completion: December 2021

Total Project Cost: \$10,809,900

Growing Suburbs Fund: \$3,324,658

Other contributions:

- Casey City Council contribution \$3,324,658
- Developer Contributions Plan \$4,160,584

Other projects in Casey City Council to receive funding from the 2019-20 Growing Suburbs Fund are:

- Selandra Rise Active Open Space Reserve (\$1,500,000)

Casey City Council will receive a total of \$4,824,658 for two projects under the Growing Suburbs Fund 2019-20 Round.

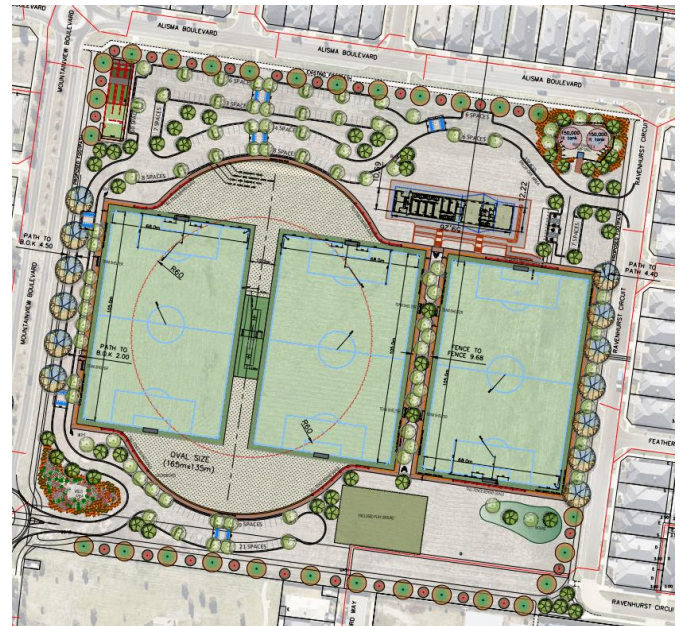


Figure 1: – Concept design (Source: Casey City Council)

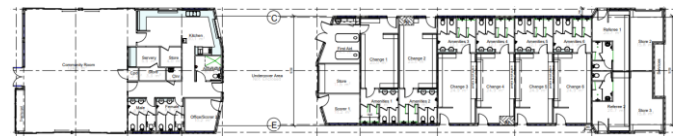


Figure 2: – Concept Design (Source: Casey City Council)

You can find out about other Growing Suburbs Fund Projects at localgovernment.vic.gov.au/gsf

For more information regarding these projects contact Local Infrastructure, DELWP.

Email: gsf@delwp.vic.gov.au or phone: 9948 8536

Growing Suburbs Fund contributes to a mix of infrastructure projects that have a direct benefit to communities living in the outer suburbs.

© The State of Victoria Department of Environment, Land, Water and Planning 2020



This work is licensed under a Creative Commons Attribution 4.0 International licence. You are free to re-use the work under that licence, on the condition that you credit the State of Victoria as author. The licence does not apply to any images, photographs or branding, including the Victorian Coat of Arms, the Victorian Government logo and the Department of Environment, Land, Water and Planning (DELWP) logo. To view a copy of this licence, visit <http://creativecommons.org/licenses/by/4.0/>

ISBN ISBN 978-1-76105-056-5 (pdf/online/MS word)

Disclaimer

This publication may be of assistance to you but the State of Victoria and its employees do not guarantee that the publication is without flaw of any kind or is wholly appropriate for your particular purposes and therefore disclaims all liability for any error, loss or other consequence which may arise from you relying on any information in this publication.

Accessibility

If you would like to receive this publication in an alternative format, please telephone the DELWP Customer Service Centre on 136186, email customer.service@delwp.vic.gov.au, or via the National Relay Service on 133 677 www.relayservice.com.au. This document is also available on the internet at www.delwp.vic.gov.au.