

Growing Suburbs Fund 2020-21

The Growing Suburbs Fund is a contribution towards meeting critical local infrastructure needs for communities in Melbourne's diverse and fast-growing outer suburbs. It is positioned to quickly respond to the pressures being experienced by interface and peri-urban communities by bringing forward local infrastructure projects that will make a big difference in the day-to-day lives of outer suburban families.



Mitchell Shire Council

Mitchell Shire Council is located approximately 60 km north of the Melbourne Central Business District and is bounded by Hume and Whittlesea councils to the south.

The southern tip has experienced significant residential growth in recent years due to affordable new housing and infrastructure to support an easy commute to Melbourne. Most of the Shire consists of rural land.

The local economy is primarily agriculture and food manufacturing. It covers an area of 2,864 square km with an estimated population of approximately 44,300 in 2018, which is projected to grow to about 97,700 by 2036¹.

¹ Victoria in Future, 2019

Wallan Community Hub 42/80 Bentinck Street Wallan 3756

The Growing Suburbs Fund will partner with Mitchell Shire Council to deliver a contemporary community hub for the Wallan community.

This project will maximise existing infrastructure by redeveloping a council owned building into a community hub for the provision of children, youth and family support services. The project will link to adjacent community service providers.

The Wallan Community Services Hub will create a single integrated community facility to support community access to services and programs focused on early intervention and prevention.

The facility will deliver expanded integrated services and programs, provide multi-use flexible spaces for community groups and activities, and encourage increased visitation. It will provide greater connections for the local community with support services located in one easily accessible area with links to public transport, close proximity to Wallan CBD and retail precinct.

Expected date of commencement:

February 2021

Expected date of completion: August 2021

Total Project Cost: \$1,204,000

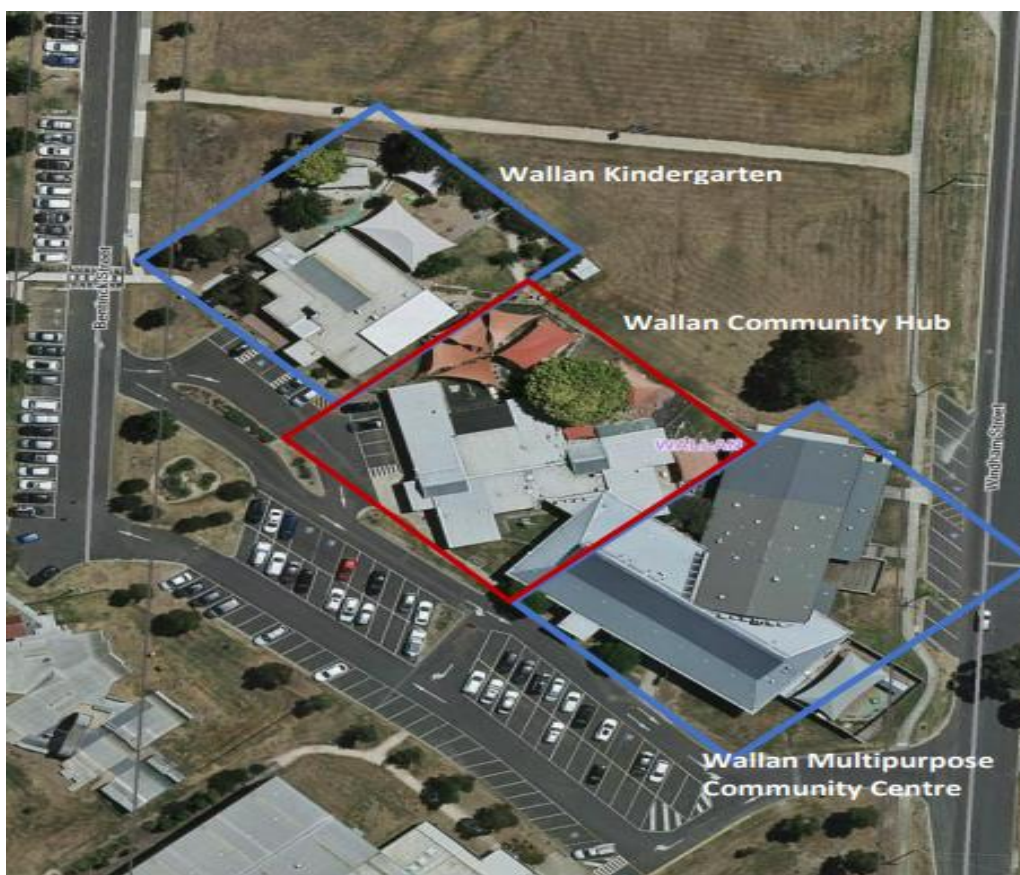
Growing Suburbs Fund: \$850,000

Other contributions:

- Mitchell Shire Council \$354,000

The other project in Mitchell Shire Council to receive funding from the Growing Suburbs Fund 2020-21 is:

- Kilmore Family and Children's Centre Expansion (\$1,108,644)



Authorised by the Hon Shaun Leane MP, Minister for Local Government and Suburban Development

Department of Jobs, Precincts and Regions
1 Spring Street Melbourne Victoria 3000
Telephone (03) 9651 9999
© Copyright State of Victoria,
Department of Jobs, Precincts and Regions 2020

Except for any logos, emblems, trademarks, artwork and photography this document is made available under the terms of the Creative Commons Attribution 3.0 Australia license.

This document is also available in an accessible format at djpr.vic.gov.au