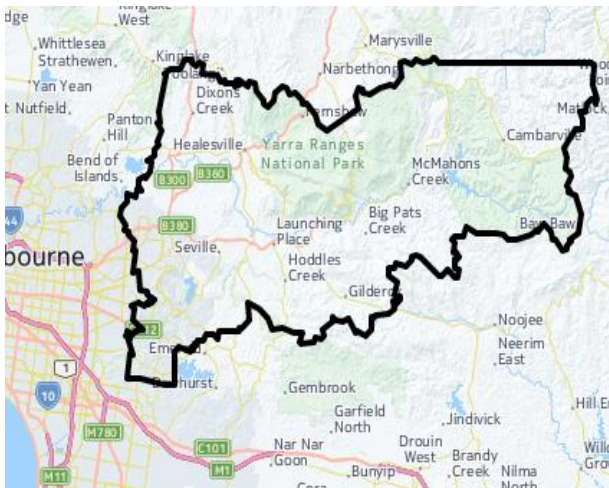


Growing Suburbs Fund 2020-21

The Growing Suburbs Fund is a contribution towards meeting critical local infrastructure needs for communities in Melbourne's diverse and fast-growing outer suburbs. It is positioned to quickly respond to the pressures being experienced by interface and peri-urban communities by bringing forward local infrastructure projects that will make a big difference in the day-to-day lives of outer suburban families.



Yarra Ranges Shire Council

Yarra Ranges Shire Council is located in Melbourne's outer east between 30 and 110 km from Melbourne's Central Business District. It covers an area of 2,470 km. Around 70 per cent of the Council's population live in the urban areas, which represent approximately three per cent of its landmass to the west of the municipality. The remaining population is distributed throughout rural areas.

Yarra Ranges Shire Council is part of the interface council area and recorded a growth rate of 0.8 per cent in 2018. The population is projected to grow from 158,200 in 2018 to about 188,800 or 16.2 per cent by 2036¹.

¹ Victoria in Future, 2019

BioMass to Energy Plant – Lysterfield Transfer Station 840 Wellington Road Lysterfield 3156

The Growing Suburbs Fund will partner with Yarra Ranges Shire Council to deliver an innovative model that generates biochar and renewable energy from woody green waste.

This project will see the installation of a new facility capable of producing 870 tonnes of biochar per year at the Lysterfield Recovery and Waste Transfer Station.

The project will have significant environmental benefits, improving the region air quality, minimising wildfires and benefitting the local agricultural sustainability.

It is expected that the relocation of dry fuel from residential properties and industries to a pyrolysis plant at a transfer station will contribute to controlling bushfire risk and improve air quality in the region.

Expected date of commencement: February 2021

Expected date of completion: August 2022

Total Project Cost: \$1,000,000

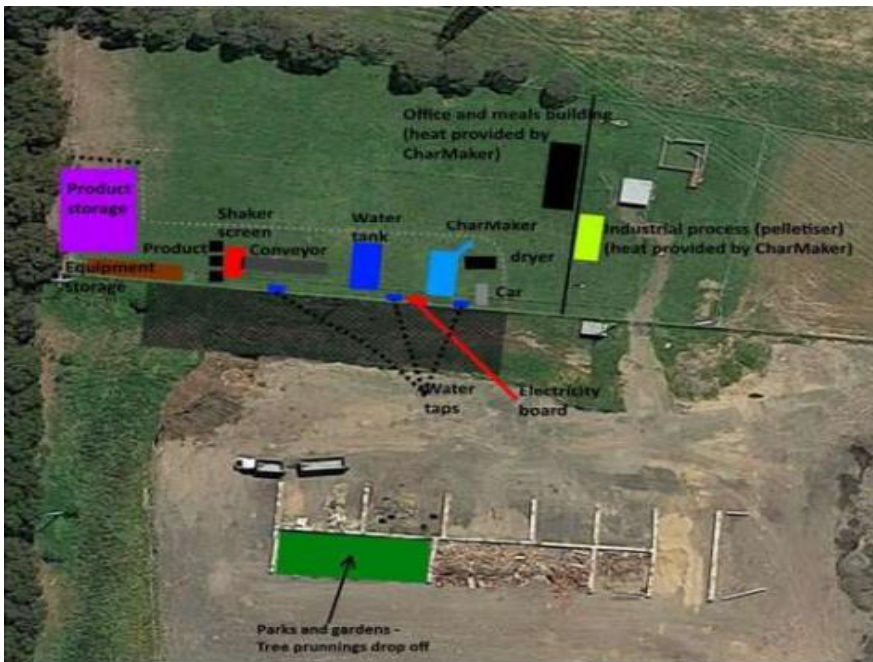
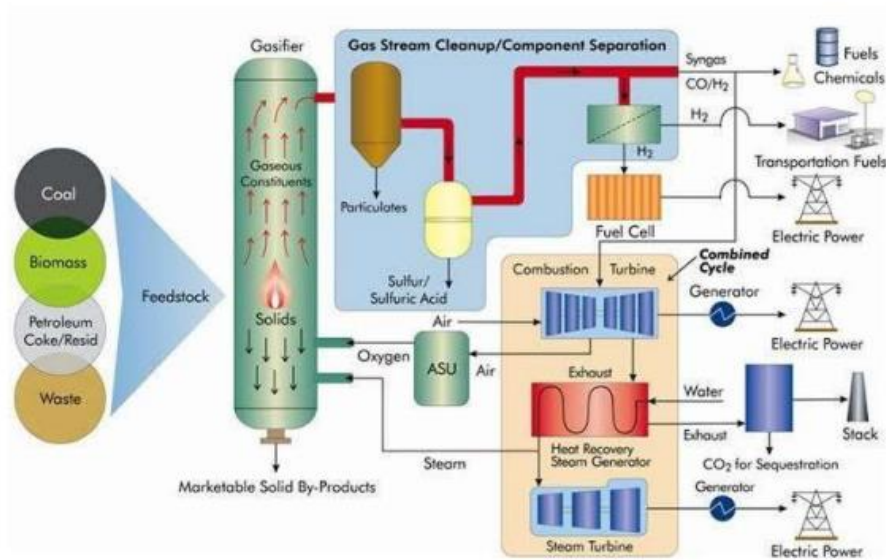
Growing Suburbs Fund: \$500,000

Other contributions:

- Yarra Ranges Shire Council \$500,000

The other project in Yarra Ranges Shire Council to receive funding from the Growing Suburbs Fund 2020-21 is:

- Kimberley Recreation Reserve Sporting Pavilion Redevelopment (\$1,850,000)
- Upwey Skate Park (\$150,000)



Authorised by the Hon Shaun Leane MP, Minister for Local Government and Suburban Development

Department of Jobs, Precincts and Regions
 1 Spring Street Melbourne Victoria 3000
 Telephone (03) 9651 9999
 © Copyright State of Victoria,
 Department of Jobs, Precincts and Regions 2020

Except for any logos, emblems, trademarks, artwork and photography this document is made available under the terms of the Creative Commons Attribution 3.0 Australia license.

This document is also available in an accessible format at djpr.vic.gov.au