

# Growing Suburbs Fund

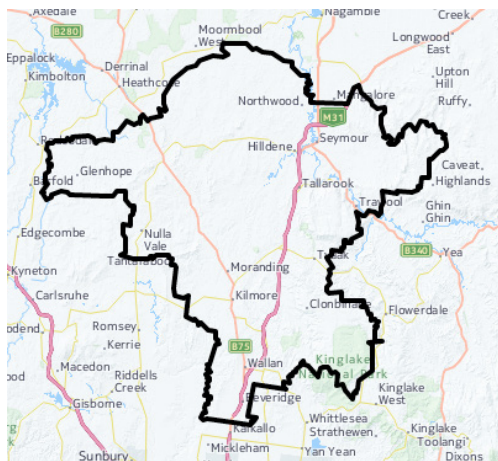
The Growing Suburbs Fund is providing much needed funding to help interface councils deliver new local infrastructure. The \$150 million investment is making a big difference in the day-to-day lives of outer suburban families by meeting critical local infrastructure needs for communities in Melbourne's diverse and fast-growing outer suburbs.



## Broadford Community Centre Revitalisation

158 High Street, Broadford 3658

MITCHELL SHIRE COUNCIL



### MITCHELL SHIRE COUNCIL

Mitchell Shire is located approximately 80 km north of Melbourne, abutting the northern borders of Hume City Council. It is characterised by a significant growth corridor in the southern area of the shire and rural areas to the north.

The local economy is primarily agriculture and food manufacturing. It covers an area of 2,862 sq km with a population of approximately 40,000 which is expected to grow to more than 89,000 by 2036<sup>1</sup>.

<sup>1</sup> Victoria in the Future, 2014 <http://profile.id.com.au/mitchell>

### PROJECT DESCRIPTION

Funding from the Growing Suburbs Fund will help Mitchell Shire Council transform a former Bush Nursing Hospital, built in 1933 into a modern community facility.

Redevelopment works will ensure that the much-loved building can meet the changing needs of the growing community in Broadford.

Works includes:

- A new multi-use office space and waiting rooms
- New multi-use meeting rooms
- Improved toilet facilities; and
- A new kitchen.

**Expected completion: Late 2017**

**Growing Suburbs Fund: \$565,000**

**Other Contributions: \$28,250**

Other projects in Mitchell Shire to receive funding from the 2016/17 Growing Suburbs Fund are:

- Mandalay Community Centre (\$2,140,000)
- Wallan Town Centre Heart Public Realm Project (\$2,191,569)

Read about other Growing Suburbs Fund Projects on [www.localgovernment.vic.gov.au/gsf](http://www.localgovernment.vic.gov.au/gsf)

For more information regarding this project contact Local Infrastructure, DELWP.  
Email: [gsf@delwp.vic.gov.au](mailto:gsf@delwp.vic.gov.au) and Ph: 9948 8551